

# The Deaf Lutheran



*Ephphatha, that is  
Be opened.*

MARK 7:34

---

Volume 52

OCTOBER 1960

Number 10

---

## In this Issue:

|  | PAGE |
|--|------|
| Notes from the Executive .....             | 147  |
| Ephphatha Conference .....                 | 148  |
| Pilgrim Lutheran Church for the Deaf ..... | 150  |
| Great Lakes Regional Convention .....      | 156  |
| Field Gleanings .....                      | 157  |
| Devotions .....                            | 160  |

## Board for Missions to the Deaf of The Lutheran Church—Missouri Synod

Rev. Ernest R. Drews, Chairman, 1680 W. Minnehaha St., St. Paul 4, Minn. MIDway 6-1682  
 Rev. Erwin E. Schroeder, Secretary, 5337 15th Ave., S., Minneapolis 17, Minn. TAYlor 3-2769  
 Rev. Elmer W. Koberg, 1365 1st Ave., S. W., Cedar Rapids, Iowa. EMPire 2-8359  
 Mr. C. J. Jacobson, Financial Secretary, 1221 Blair Ave., St. Paul 4, Minn. MIDway 5-4762  
 Mr. E. N. Mitchell, Ph. D., 405 24th Ave., S., Grand Forks, N. Dak. 2-3892  
 Rev. Wm. F. Reinking, Exec. Secretary, 210 N. Broadway, St. Louis 2, Mo. CEntral 1-6969

### Lutheran Ministers to the Deaf

Rev. Orlin S. Anderson  
 51-69 74th St., Elmhurst 73, N. Y.  
 Rev. Clark R. Bailey  
 3821 Forest Ave., Des Moines, Iowa  
 Rev. Robert A. Bauer  
 10503-66th Ave., Edmonton, Alta., Can. GENEva 3-7408  
 Rev. John A. Beyer  
 1101 15th Ave., Seattle 22, Wash. EAST 4-2200  
 Rev. N. E. Borchart  
 11719 Evanston Ave., Detroit 13, Mich. LAKEview 7-7023  
 Rev. Wayne C. Bottlinger  
 889 North Willett, Memphis 7, Tenn. BRoadway 6-7143  
 Vicar Walter L. Busby  
 726 N. Auburndale St., Memphis 7, Tenn. BRoadway 4-4800  
 Rev. Robert F. Cordes  
 204 N. Chicago Ave., Sioux Falls, S. Dak. 47956  
 Rev. Theo. DeLaney  
 2034 32d Ave., San Francisco 16, Calif. LOMBard 46793  
 Rev. H. R. Drachenberg  
 1929 Huxley St., Madison 4, Wis. CHERRY 9-9388  
 Rev. A. E. Ferber  
 3807 Gillham Rd., Kansas City 11, Mo. LOGAN 1-3849  
 Rev. W. Ferber  
 617 14th St., S., Fargo, N. Dak. ADAMS 5-5661  
 Rev. Theo. Frederking  
 1221 Virginia Ave., Cleveland 7, Ohio ACADemy 1-6199  
 Rev. G. W. Gaertner, Ph. D.  
 3233 62d Ave., Oakland 5, Calif. LOCKhaven 93881  
 Rev. G. A. Gehrs, Jr.  
 910 S. Wilton Pl., Apt. 4, Los Angeles 19, Calif. REPUBLIC 4-6515  
 Rev. C. Roland Gerhold  
 510 Parker St., Newark 4, N. J. HUMBOLDT 5-2260  
 Rev. Herman Graef  
 5070 Lake St., Omaha 4, Nebr. REGENT 5732  
 Rev. Francis G. Gyle  
 1375 N. E. 137 St., North Miami 61, Fla. PLAZA 8-7412  
 Vicar Larry Harris  
 510 Parker St., Newark 4, N. J. HUMBOLDT 5-2260  
 Rev. A. L. Hauptman  
 3320 — 43 Ave. S., Minneapolis 6, Minn. PA 1-3239  
 Rev. Harry W. Hoemann  
 1728 Varnum St. N. W., Washington 11, D. C. RANDOLPH 3-0535  
 Rev. Louis Jasper  
 53-13 244th St., Douglaston 62, N. Y. BAYSIDE 9-7024  
 Rev. A. T. Jonas  
 927 Gramercy Pl., Los Angeles 19, Calif. REPUBLIC 5-8630  
 Rev. Martin Kosche  
 116 Walnut St., Delavan, Wis. SARATOGA 8-3730  
 Rev. Geo. R. Kraus  
 6301 Alamo, St. Louis 5, Mo. PARKview 7-1752  
 Rev. W. H. Lange  
 1230 Elizabeth, Denver 6, Colo. DUDLEY 8-1548  
 Rev. William Ludwig  
 153 East Lane Ave., Columbus 1, Ohio AXMINSTER 9-8311  
 Rev. E. Mappes  
 2811 N. 66th Ave., Omaha 4, Nebr. WALNUT 1529  
 Rev. Leroy W. Mason  
 401 E. 32d St., Apt. 2214 Chicago 16, Ill. CALUMET 5-3701  
 Rev. Gene E. Merrell  
 2029 N. Emerson, Indianapolis 18, Ind. FLEETWOOD 7-3378  
 Rev. Martin E. A. Mueller  
 2571 N. Grant Blvd., Milwaukee 10, Wis. HILLtop 5-7230  
 Rev. Ervin Oermann  
 110 Byrne, Houston 9, Tex. UNDERWOOD 9-2726  
 Rev. W. F. Reinking  
 1615 Trotter Way, Florissant, Mo. TEMPLE 7-8753  
 Rev. Geo. C. Ring  
 4807 N. E. Rodney Ave. Portland 11, Oreg. ATLANTIC 1-9589  
 Rev. Herbert W. Rohe  
 1369 East Ave., Rochester 10, N. Y. GREENFIELD 8291  
 Rev. Rodney Rynearson  
 3614 W. Wellesley, Spokane 15, Wash. FAIRfax 8-9673  
 Rev. J. L. Salvner, D. D.  
 4503 Hampton Road, N., Minneapolis 22, Minn. JUNIPER 8-8411  
 Rev. E. Scheibert  
 1400 N. Ridgeway Ave., Chicago 51, Ill. BELMONT 5-7480  
 Rev. Earl J. Thaler  
 32 Brunswick Ave., W. Hartford 7, Conn. JACKSON 3-8386  
 Rev. Delbert Thies  
 104 Finley St., Jacksonville, Ill. CHESTNUT 3-2528  
 Rev. Frank Wagenknecht  
 1335 Commercial St., Pittsburgh 18, Pa. FREMONT 1-7064  
 Rev. W. Westermann  
 323 McIver St., Greensboro, N. C. BRoadway 4-7251

Rev. O. C. Schroeder, B. D., 1648 E. 85th St., Chicago 17, Ill. — REGENT 4-3621  
 (Serving the Deaf and the Blind)

These ministers preach in more than 275 cities in our land; they conduct classes in religion at over 50 city and state schools for the Deaf. You will find them ready to serve you; call upon them or write to them. The Deaf need God's Word.

## THE DEAF LUTHERAN

Official Paper of the Board for Missions to the Deaf  
 The Lutheran Church—Missouri Synod

Published monthly by Concordia Publishing House, St. Louis 18, Mo. Subscription price, \$1.00 per year. Second-class postage paid at St. Louis, Mo.

The DEAF LUTHERAN goes to press on the 3d Friday, two weeks before issue. Send all news, pictures, stories, and articles to Rev. Harry W. Hoemann, B. D., Editor, 1728 Varnum St. N. W., Washington 11, D. C.

Send subscriptions, address changes, and cancellations to The DEAF LUTHERAN, 210 N. Broadway, St. Louis 2, Mo.

## Notes from the Executive

The last big holiday weekend of this year, the Labor Day weekend, has past. I would like you to think back to the holiday you had on the Fourth of July. Just what did the Fourth of July mean to you? Some time ago I received a letter from a young deaf friend that I met while I was in Japan. He happened to write the letter on the Fourth of July, in Japan. As he was writing, he noticed the date, and so he sent congratulations to me, since the United States was celebrating its Day of Independence. I imagine that the Fourth meant for many of you a day of good times—picnics, swimming, taking a drive, watching fireworks, and many other happy things. But how many of you stopped to realize just what that day really stands for? It was because of that day, and the war that followed it, that you and I enjoy the freedom and the many other blessings that we have here in the United States. Did any of you pause during that day to give thanks to the Lord for all the blessings we enjoy as citizens of the United States?

So many times we easily forget all that God has given to us. You quickly realize these blessings when you travel outside of the United States. How thankful you all should be for the fine education you received in a good school under teachers who are trained to work with you and who love each one of you! How thankful you should be for the home in which you live, whether it is your own home or a home that you are able to rent. Very few of the deaf in the lands that I visited live in as

comfortable a home as you have. How often do you thank God when you step into your car and drive to work or take a long drive on your vacation? The deaf in the Orient, are not allowed to drive, but even if they could get permission, there are very few of them who would be able to afford to have such a luxury as a car. Do you ever thank God after you have returned from a visit to the nearby supermarket, where you have picked out the food that you wish to eat for the next few days or so? How much we have to eat, and how many different things we have to eat, when you compare it with the food in other countries. We think nothing about lighting our stove, loading the washing machine, opening the refrigerator, or turning on a dish washer. These are many things that we have grown accustomed to, but these are luxuries beyond the dreams of most of the deaf in the Orient.

How good God has been to us all! And how unthankful we all have been to Him! Is it not time for us now to count our blessings and to realize that all we have has come to us from the bounteous and loving hand of our Father in heaven? Daily our prayers of thanks should ascend to God on high, since His hand opens to us each day and satisfies all of our needs. But there is a much greater gift we must be thankful to our God for. That is the gift of His own son, Jesus Christ, who came to this earth to suffer and die for us. Now by faith in Jesus we can be washed clean from all our sins and look forward to life eternal in heaven.

This great blessing of saving faith in Jesus Christ is of greater importance than all the other blessings that we have received for our bodily life. God in His mercy has sent to us pastors and teachers to bring to us this precious Gospel. God has enabled us to have churches, schools, and Sunday schools, where we can study and worship together and grow in faith in Jesus. But what do we do with these blessings? So often we find ourselves too busy for God on Sunday morning. If we are not too busy, then many of us perhaps are too tired to hear God's Word. There are others who just don't care about church or feel that they are too important or too intelligent to bother with such a thing as worshipping God.

When people stop coming to church, or come to church only once in a while, they are saying to God, "I don't need You. I can take care of myself." But we do need God, for it is only He that can give us the strength and the help we need to live on this earth. More important than that, it is only He

through His Son, Jesus Christ, that can give us the key which opens the gates of paradise for us. Thank God for all His blessings for both body and spirit, and show your thanks to God by attending your services regularly. Bring others with you, and share the blessings that you have received so that others in different parts of the world will also come to know the love of God as He has revealed it in His Son, Jesus Christ.

About a month after you receive this issue of the paper will be election time. To be able to vote for the President and the government of your country is a blessing that not many people enjoy. Use your blessing wisely. Read your newspapers about the candidates for the various offices from President of the United States down to the mayor of your city. Know who your candidates are and what they plan to do if elected. Then by prayer and study cast your vote for the one you feel should be in charge of your government.

God be with you all till next month.  
W. F. REINKING

## Ephphatha Conference

The annual meeting of the Ephphatha Conference of Lutheran Missionaries to the Deaf (The Lutheran Church—Missouri Synod) was held July 19—22 at the Lutheran School for the Deaf in Detroit, Mich.

The conference was opened with a worship service and Holy Communion in the Gloria Dei Chapel of the school. Rev. G. W. Gaertner of Oakland, Calif., delivered the sermon. Rev. N. E. Borchardt of Detroit served as liturgist.

Ephphatha Conference offers an opportunity for Lutheran pastors serving the Deaf to learn better ways of ministering to the lay people of the church. Members of the Board and the missionaries study and plan how the Gospel of Jesus Christ may be spread more effectively among the Deaf.

Reports on various phases of the conference will be printed in subsequent issues of the DEAF LUTHERAN. For this issue, however, the following items will be covered:

## Guest Speaker

Dr. Powrie Vaux Doctor of Galaudet College, Washington, D. C., was the guest speaker for the conference. He presented a very interesting and stimulating address



Dr. Powrie Vaux Doctor

on the topic "Pure Oralism and the Combined Method, and Their Effect upon the Life of the Deaf." Dr. Doctor also visited the sessions of Ephphatha Conference on the day he spoke.

## Deaf Mission Society

Rev. Theodore DeLaney, treasurer of the Deaf Mission Society, announced that funds had been granted for the trip through the Far East by Executive Secretary William F. Reinking in the amount of \$2,000, but that expenses had been below this amount.

A committee was appointed to revise the constitution of the Deaf Mission Society.

## The "Deaf Lutheran"

Rev. H. W. Hoemann, editor of the DEAF LUTHERAN, proposed converting the DEAF LUTHERAN into a

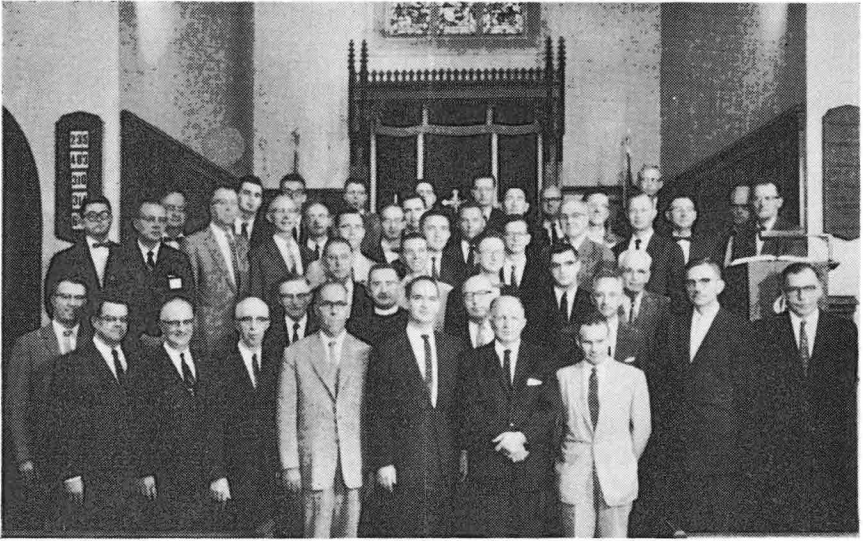
supplement to the *Lutheran Witness* so that subscribers could receive not only the news of the Deaf mission field but also the news of Synod and all its mission and educational programs. Both Ephphatha Conference and the Board for Missions to the Deaf authorized the Executive Secretary to investigate whether such a proposal is possible. If the plan is put into effect, it will not be for another year yet. And all unexpired subscriptions will apply toward the combined *Lutheran Witness* and DEAF LUTHERAN Supplement. Do not postpone renewing your subscription to the DEAF LUTHERAN to see what may happen to this proposal.

## A National Conference?

Pastor Theodore Frederking of Cleveland, Ohio, presented for discussion on the floor of Ephphatha Conference whether a National Lutheran Conference or a National Lutheran Convention for Deaf Laymen and Laywomen should be established. Ephphatha Conference was not authorized to make a decision on the matter, but many of the factors were weighed and considered. Of prime importance was



Chairman of Ephphatha Conference, Pastor Clark Bailey of Des Moines, Iowa, and Pastor Theodore DeLaney of San Francisco, Calif., Secretary



**Ephphatha Conference**

the distinction between a conference and a convention. Should the purpose of such a national meeting, if it is held, be much the same as other Deaf conventions of a national or local nature, involving primarily business sessions and perhaps a banquet? Or should the meeting take the form of a period of study and workshops at which Deaf laymen and laywomen could be trained for leadership in the church? You are urged to express your opinion on this subject either by talking to your pastor or by

writing to Executive Secretary William F. Reinking, 210 N. Broadway, St. Louis 2, Mo.

#### **Thanks to L. S. D.**

Thanks were extended by the Ephphatha Conference to Dr. J. A. Klein and to the Lutheran School for the Deaf for the hospitality shown the conference while meeting at the school. The members of the conference enjoyed comfortable quarters in the school dormitory and were served delicious meals in the dining room.

## **✦ Pilgrim Lutheran Church for the Deaf**

*Los Angeles, Calif.* Pilgrim Lutheran Church for the Deaf, Los Angeles, Calif., was dedicated to the glory of God and to the welfare of the Deaf on May 29. The date was the culmination of many years of planning, almost a year and a half of building, and many months of work evenings and on Saturdays by the Deaf members.

Three services of dedication were held. For the morning service Dr. G. W. Gaertner, West Coast Regional Counselor, preached the sermon. Sermons for the afternoon service were delivered by Rev. Erwin Schroeder, Secretary of the Board for Missions to the Deaf, and for the evening service by Rev. Walter Niermann, Circuit Counselor of





Opening the doors of Pilgrim Church. L. to r., Dr. George W. Gaertner, West Coast Regional Counselor; Henry Goodwin, builder and contractor; Rev. Erwin Schroeder, Secretary of the Board for Missions to the Deaf; Walter R. Hagedohm, architect; Frank Webb, usher; Perry Stephenson, president of Pilgrim Congregation; Everett Hollenbeck, head usher; Rev. Arnold T. Jonas, pastor of Pilgrim Congregation

the Southern California District, with pastors Gaertner and Jonas acting as interpreters. A choir of 15 deaf ladies signed the dedication hymns, trained by the choir leader, Marcus Tibbetts, and led by Verda Law, daughter of a member of Pilgrim Congregation. Vocal music was supplied by the Lutheran Laymen's League Male Chorus of the Southern California District. A total of over 1,200 people attended the three services.

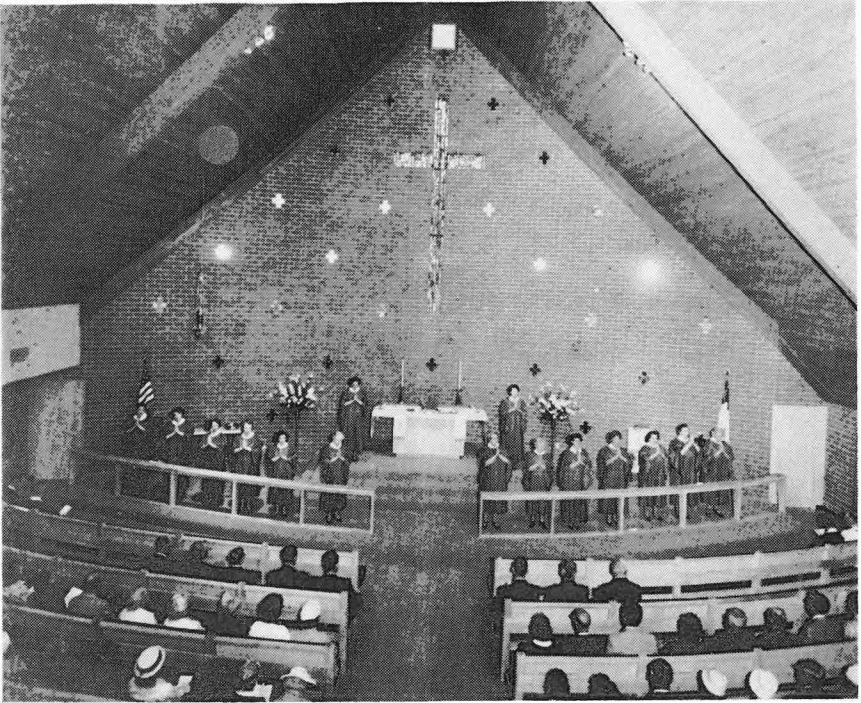
The liturgical appointments were carried into the church during the morning service by the church officers. Perry Stephenson, president, unlocked the doors with the key handed to him by the builder, Henry Goodwin, and the architect, Walter

R. Hagedohm. Harry Kingsley and Niels Boesen carried the American and Christian flags in the procession, followed by the pastor. Harold Thuve carried the Bible accompanied by John P. Miller, technical adviser from the Board for Missions to the Deaf during the building program. Mr. Degner carried in the altar books, John Stine the Communion ware, and Fred Farmer and Ervene Smith the offering plates.

Coffee, punch, and cookies were served by the ladies' aid of Pilgrim Congregation.

The architect, Walter R. Hagedohm, describes the physical plant as follows:

"The design of the Pilgrim Lutheran Church for the Deaf is



The ladies' choir. On altar step: Mrs. Evelyn Tibbets and Mrs. Esther Kingsley. L. to r., Mrs. Delores Webb, Mrs. Emily Dortero, Mrs. Bessie Ludwick, Mrs. Paula Stottler, Mrs. Lottie Gantner, Miss Ruth McKinnon, Mrs. Dorothy Farmer, Mrs. Margaret Meloy, Mrs. Jane Smith, Mrs. Julia Smith, Mrs. Hedwig Hollenbeck, Mrs. Edna Boesen, Mrs. Effie Dahl

unique in that it is specially designed for their particular use, and yet it is similar to other churches. Instead of a deep, narrow chancel it has a wide, open chancel with a curved brick wall in pattern which, with the high open ceiling construction, gives a feeling of enveloping the congregation. Everything hinges on visibility. Thus, the altar, which is of botticino marble from Italy, is free standing. This permits the pastor to face the congregation in those parts of the divine service and Holy Communion liturgy requiring his presence at the altar.

“The large cross in the wall behind the altar has an abstract design in stained glass set in concrete.

“The seating is arranged in a reverse curve, as is the Communion rail to the curved wall. This makes for a feeling of intimacy and closeness and permits each seat an uninterrupted line of vision.

“Of importance to their social life is the parish hall, parlor, and kitchen, which is joined to the church with a covered passage. Outside this hall are areas which can be used for outdoor activities or other gatherings. The offices and classrooms are grouped around a patio offering a protected area for the children.

“An architect always hopes to design a church in which the congregation's interest, hopes, and cooperation will unite with his efforts.



Pilgrim Lutheran Church for the Deaf has granted such a soul-satisfying experience.

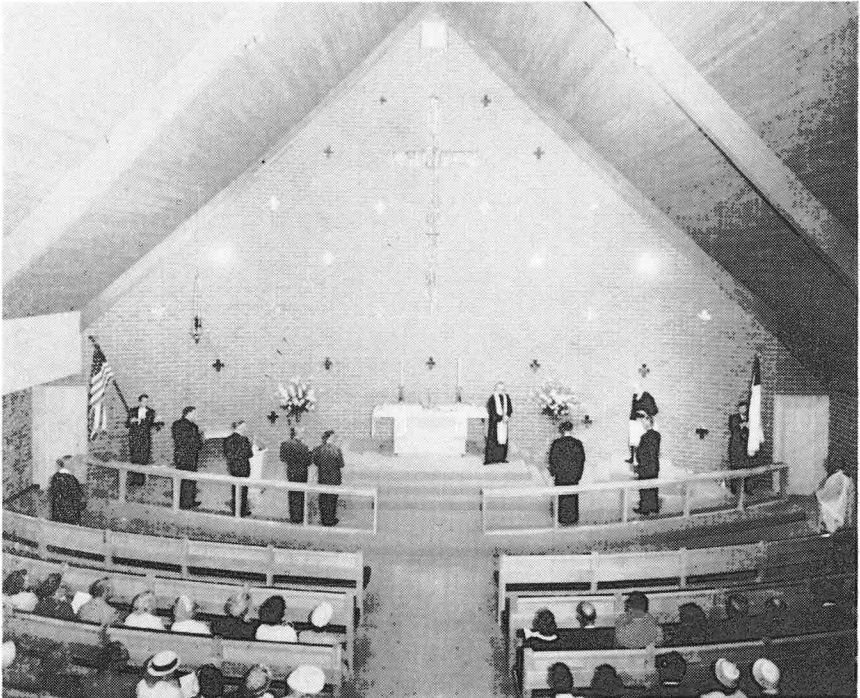
"The enthusiasm, willingness to work, and sacrifice for a place to worship our Lord, exhibited by the pastor and his congregation, was an inspiration. At every opportunity members of the church and the pastors were on the job. Even though some of the work to be done was not necessarily up to them, they cheerfully took over. They not only proved willing workers but also were excellent craftsmen. The building of the pews indicates a high degree of skill and a real love for the work. If ever a church has been built with a true Christian spirit, it is this church.

"May God continue to bless the work of the pastors and these peo-

ple so that many will come and through the Word find the peace that endures within these gates."

The builder, Henry J. Goodwin, writes: "I was greatly impressed by the work done by the members of the church themselves. The painting, sewing, cabinet work, Communion rail, and paneling were all very well and carefully done. I was also interested in the special architectural features included in the design, which resulted in a very beautiful structure. I have built over 220 different buildings, including residences, apartments, factories, stores, and churches, and to me the Pilgrim Lutheran Church for the Deaf is the one I am most pleased with and most proud to have built."

Writing in behalf of the congre-



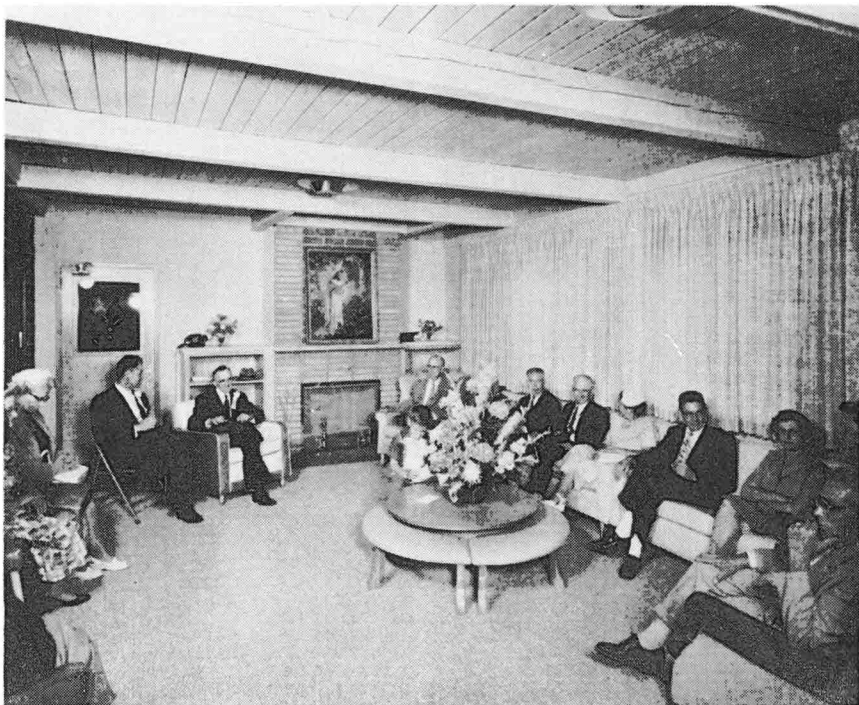
**John P. Miller places the Bible on the pulpit in memory of his wife, Mrs. Katherine Martha Miller**

gation, Pastor A. T. Jonas states, "We are chiefly and most humbly grateful to our faithful God and Savior, Jesus Christ, who since the day of joint congregational Prayer Day, has answered our every prayer, blessed every effort, overcome every problem and obstacle, guarded all workers from serious accident, and has blessed this congregation with His Spirit of peace and love. His loving care and concern has been most plainly evident. . . . To Him be glory in this church through all ages to come. Amen."

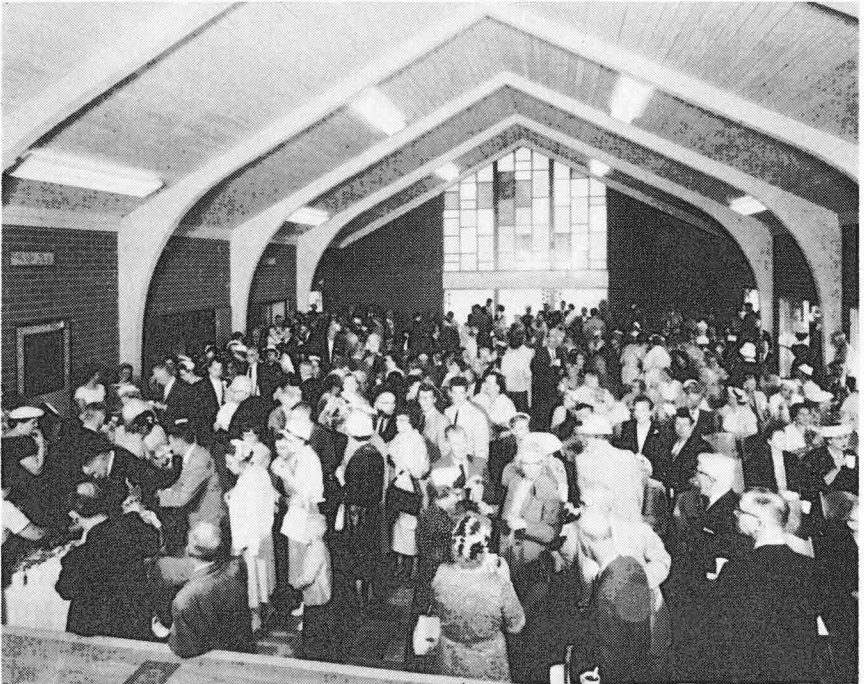
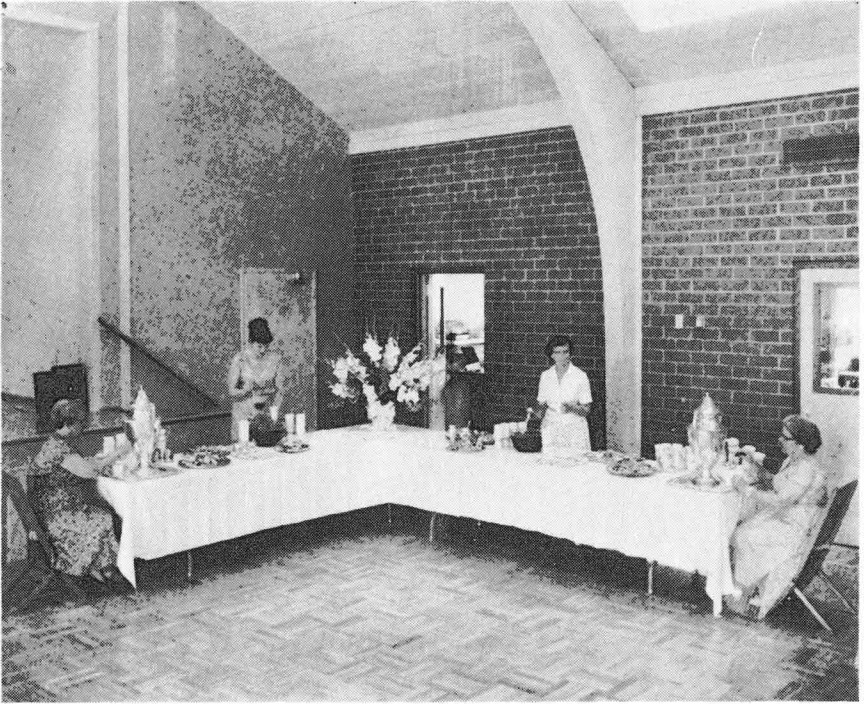
Pilgrim Congregation, numbering 170 communicant members, raised over \$50,000 during the past six years for the building program. In addition the members made the pews and their cushions, the Communion rail, the planter boxes, the

baptismal font, the desk for the pulpit, the window drapes, the furniture for the lounge, most of the finish carpentry on the inside, and all the cabinet work. They also did most of the exterior and interior painting. Beginning October 1959, a crew of deaf men of not less than 10, and as many as 35, worked every Tuesday and Thursday night and all day on Saturday. Many women were also on hand, especially on Saturdays, to help clean up and to provide the noon meals for the Saturday workers. John P. Miller estimates the value of the work of the volunteer workers at \$25,000. The over-all costs of the church and parish hall, including the cost of the site, approximate \$200,000.

The church seats 300 people. It is built with a sacristy, restrooms, and



The lounge of Pilgrim Congregation in the parish hall

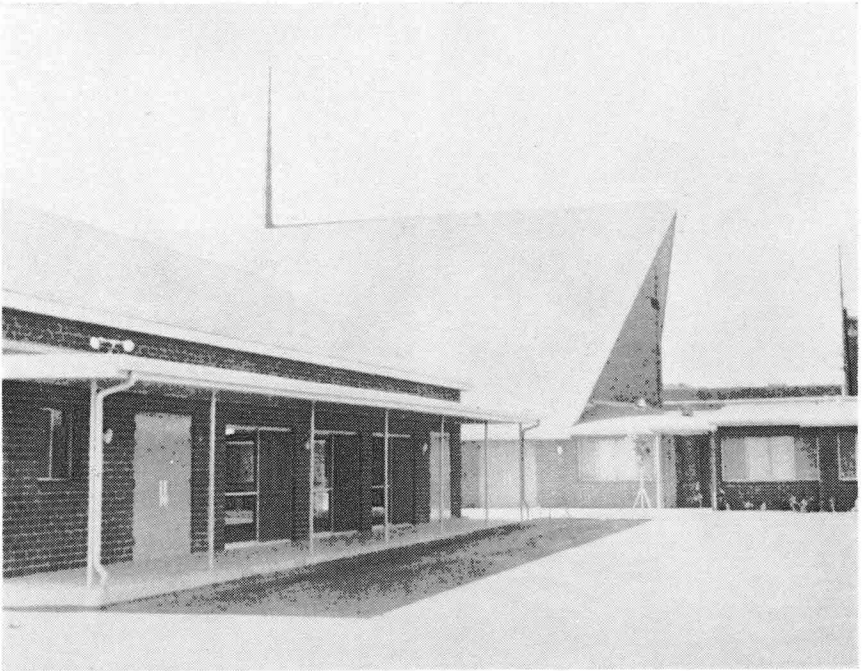


Serving and enjoying refreshments in the parish hall May 29, 1960

heating and utility rooms. The parish hall features a beautiful large kitchen and lounge. It will seat over 200 people for dining. At the rear of the church are four classrooms on an L-shape and forming a quadrangle with the three church offices and the altar wall of the church. The front of the church is set off by a very tall wooden cross and stained-glass windows with three ceramic panels containing symbols of the Trinity: Father, Son, and Holy Ghost. The front of the parish hall has a ceramic title

picture with seven scenes from the Life of Christ: the birth, the 12-year-old Jesus in the temple, the Baptism, the healing of the deaf-mute, the Crucifixion, the Resurrection, and the Ascension.

Pilgrim Congregation now has facilities for a full youth program and a well-rounded and full church program. Under God's continued guidance the congregation hopes to be a continued blessing to many more Deaf people in the Greater Los Angeles area.



Pilgrim Lutheran Church, Los Angeles, showing the parish hall, the church, the entry to the quadrangle of classrooms, and part of the church offices

## Great Lakes Regional Convention

*Detroit, Mich.* The convention of the Great Lakes Region took place June 25 and 26 at the Lutheran School for the Deaf in Detroit, Mich. About 200 attended the con-

vention service and banquet. During the meetings about 100 delegates took part in the lively discussions.

"For Me to Live Is Christ" was

the theme of the convention. Paul L. Smith of Cleveland, Ohio, delivered the first lecture, explaining what this important sentence means. Rev. William Ludwig of Columbus, Ohio, together with three members of his congregation, presented a panel discussion of how Christians who "live for Christ" will conduct themselves in church, in the home, at work, and in association with people.

A. Niemeyer of Chicago, Ill., delivered a third essay on how Christians who "live for Christ" will respond to support the church, to give to missions, and to contribute toward charitable causes.

Edward Luchow of Detroit presented the fourth essay in which he described how we Christians, who say we "live for Christ," should use our free time to try to lead back failing and straying members to become true Christians and to serve God faithfully.

Rev. Theodore Frederking, Re-

gional Counselor of the Great Lakes Region, posed the question, "Shall we favor beginning a National Lutheran Convention of the Deaf?" A majority voted in favor of the proposal; however, the minority was firmly opposed to the idea because of the large expenses of a national convention.

On Saturday evening, June 25, Rev. William Reinking, Executive Secretary of the Board for Missions to the Deaf, presented a lecture on his trip to Japan, Hong Kong, Formosa, the Philippines, and Hawaii. The lecture was accompanied by colored slides.

In the convention service on Sunday morning Rev. O. C. Schroeder was awarded the honorary degree of Doctor of Divinity from Concordia Seminary, St. Louis, Mo. Rev. Harry A. Timm, Secretary of the Board for Missions to the Blind, spoke in behalf of the board. The sermon for the convention service was delivered by Rev. William Ludwig.

## Field Gleanings

### **Work for Deaf Patients in Tennessee Mental Hospitals Progresses**

*Memphis, Tenn.* On June 21 and 22 Rev. Robert Rau, director of ancillary activities for the Tennessee State Department of Mental Health, and Pastor Wayne Bottlinger of Memphis, Tenn., made a survey of Central and Eastern State hospitals to see whether services and activities similar to those offered at Western State Hospital might be offered the Deaf at these two institutions.

Pastor Bottlinger reports that Rev. Robert Rau has shown great

interest in the Deaf of Tennessee and in improving the environment of Deaf patients in the three mental hospitals of that state.

### **Stained-Glass Windows for Gloria Dei Chapel**

*Detroit; Mich.* The beauty of the Clara Elizabeth Knudson Gloria Dei Chapel at the Lutheran School for the Deaf in Detroit will be enhanced shortly by the addition of stained-glass windows.

Daily morning devotions and weekly worship services have been held in the chapel for the past 20 years.



The windows are the gift of friends of the school. After the ten windows have been installed and dedicated to the glory of God and the memory of sainted loved ones, the school with their permission will make the names of the generous donors known to the public.

### **Bimonthly Services at Columbus, Nebr.**

*Omaha, Nebr.* Beginning in September pastors Mappes and Graef of Omaha, with the consent of the Board for Missions to the Deaf, are scheduling bimonthly services for the Deaf in Columbus, Nebr.

Alternating with Nebraska City, services will be conducted on the third Sunday of the month. On Sept. 18 the first service was held in Columbus. On Oct. 16 the service will be held at Nebraska City. In November the service will be at Columbus again.

### **† Dean Hofmann †**

*Omaha, Nebr.* Dean Hofmann, 23, a member of Pilgrim Lutheran Church for the Deaf, Los Angeles, Calif., departed this life in Omaha, Nebr., on July 21. Mr. Hofmann was a former member of Bethlehem Congregation in Omaha. He had been working in Los Angeles for about one year. He attended the Lutheran School for the Deaf in Detroit, Mich., and the Nebraska State School for the Deaf.

Mr. Hofmann was visiting his parents at Indianola, Nebr., and friends in Omaha. He attended the worship service at Bethlehem Church in Omaha on July 10. He became ill and was taken to an Omaha hospital, where he passed away.

Funeral services were conducted at Indianola, Nebr., on July 24.

### **Missouri Synod Shows High Numerical Gain**

*St. Louis, Mo.* For the 15th consecutive year, The Lutheran Church — Missouri Synod has shown the highest numerical increase among major Lutheran bodies, according to a report released by the National Lutheran Council.

Lutheran churches in North America had 8,313,848 baptized members at the end of 1959, making the Lutherans the third-largest Protestant denomination in America exceeded only by the Baptists and Methodists. This was an increase of 223,805 over the previous year.

The Missouri Synod added 72,185 baptized members to its rolls, boosting its membership 3.1 per cent to 2,387,292. Over the past 15 years the Missouri Synod has added 946,921 members, an average of 63,128 annually, to make it the second-largest Lutheran body in America. The United Lutheran Church is the largest with 2,447,012 members.

### **Superintendent Stanley D. Roth Speaks at Conference**

*Kansas City, Mo.* Superintendent Stanley D. Roth of Olathe, Kans., spoke before the Midwest Conference of Lutheran Deaf and Lutheran Pastors to the Deaf at Kansas City, Mo., on Aug. 27. The topic on which he addressed the group was "Religious Bible Training in Schools."

The Midwest Conference represents western Missouri, Iowa, Nebraska, Kansas, Oklahoma, Wyoming, Colorado, Utah, and northern New Mexico.

The 1960 convention was held at Pilgrim Lutheran Church on Gillham Road in Kansas City, Rev. A. E. Ferber, pastor.



### **Terry Lee Montgomery a Guest of the Sampsons**

*Hawthorn, Nev.* When Pastor Marlin Sampson and his family left Oklahoma City for Hawthorn, Nev., Terry Lee Montgomery went with them. Terry is 12 years old. He has normal hearing.

Terry's mother, Mrs. Montgomery, raised one son to become a minister to the Deaf. Pastor Clarence Landon, Baptist, of Albuquerque, N. Mex., is her older son. Terry hopes also to become a minister, probably a minister to the Deaf.

Mrs. Montgomery recalled the story of Samuel, how Samuel's mother gave him to the Lord. Because of her advancing age she was willing to part with Terry for the same purpose.

### **Adam and Thompson Wed**

*Pittsburgh, Pa.* Fred Adam and Mrs. Rosella Thompson, both of Pittsburgh, were united in marriage at a private ceremony at First Trinity Lutheran Church on July 31. Pastor H. W. Hoemann officiated.

### **† Mr. Fred Wunsch †**

*Buffalo, N. Y.* Fred Wunsch, 82, of Buffalo, N. Y., departed this life suddenly on June 27. For many years Mr. Wunsch supplied the Buffalo Deaf with copies of *Portals of Prayer*, daily devotional booklets. He also assisted Pastor Rohe in making calls.

### **Clark Brill Confirmed**

*Rome, N. Y.* Clark D. Brill was received into membership with the Lutheran Church at St. John's Lutheran Church, Rome, N. Y., on June 13. Rev. H. Rohe is his pastor.

### **Service Held for Convention Goers**

*Des Moines, Iowa.* In order to make it possible for the Deaf attending the Iowa Association of the Deaf convention at Waterloo, Iowa, Aug. 19—21, to attend worship services on Sunday morning, Pastor Clark Bailey made arrangements with the hotel president in Waterloo for a church service in the hotel at 10:00 A. M.

### **Plans Trip Through Wyoming**

*Denver, Colo.* The Board for Missions to the Deaf has authorized Pastor William Lange of Denver to make a trip to Cheyenne, Casper, and Torrington, Wyo., in order to visit the Deaf in these areas.

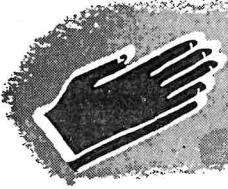
### **Installed at Washington, D. C.**

*Washington, D. C.* Rev. H. W. Hoemann was installed as minister to the Deaf in the Washington, D. C., field on Sunday, Aug. 21, in an afternoon service at Christ Lutheran Church, 5101 Sixteenth St., Washington, D. C.

Dr. Martin C. Poch of Bethesda, Md., was the principal speaker. Pastor W. Westermann conducted the rite of installation, with Rev. C. Roland Gerhold of Newark, N. J., serving as interpreter.

As pastor of the Washington, D. C., field, Rev. Hoemann will serve preaching stations in Washington, D. C., Frederick, Md., and Baltimore, Md. He will serve the state schools of Virginia, West Virginia, and Maryland. And he will serve as campus pastor to Lutheran pupils enrolled at Gallaudet College in Washington.

A reception was held for Pastor Hoemann and his family immediately after the installation service.



# Devotions

## “Light for Your Way”

### Daily Bible Readings for October

October 1 — Matthew 16:13-23  
 October 2 — Mark 9:2-8  
 October 3 — Matthew 26:30-35  
 October 4 — John 13:1-10  
 October 5 — Matthew 26:47-56  
 October 6 — Matthew 26:69-75  
 October 7 — John 20:1-10  
 October 8 — John 21:1-8  
 October 9 — John 21:15-23  
 October 10 — Acts 2:1-16  
 October 11 — Acts 3:1-16  
 October 12 — Acts 4:5-22  
 October 13 — Acts 9:32-43  
 October 14 — Acts 10:9-23

October 15 — Acts 10:34-48  
 October 16 — Acts 12:1-17  
 October 17 — Galatians 2:11-18  
 October 18 — 2 Peter 1:12-21  
 October 19 — Mark 3:13-19  
 October 20 — Mark 5:35-43  
 October 21 — Mark 9:38-50  
 October 22 — Luke 9:51-56  
 October 23 — Mark 10:35-45  
 October 24 — John 13:21-30  
 October 25 — Mark 14:32-42  
 October 26 — John 18:12-18  
 October 27 — John 19:23-27  
 October 28 — John 20:1-9  
 October 29 — John 21:20-25  
 October 30 — 1 John 1:1-4  
 October 31 — Galatians 3:23-4:11

“Thou art the Christ, the Son of the Living God” (Matthew 16:16)

## ORDER FORM

### THE DEAF LUTHERAN

210 N. Broadway, St. Louis 2, Mo.

Subscription Price: \$1 per Year

Amount enclosed \$ \_\_\_\_\_

New

Renewal

If Renewal, please send address label. ➔

Please print name and address. Thank you.

Name \_\_\_\_\_

Street or Route \_\_\_\_\_

City \_\_\_\_\_ Zone \_\_\_\_\_

State \_\_\_\_\_