

✓

The Deaf Lutheran



*Ephphatha, that is,
Be opened.*

MARK 7:34

Volume 52

NOVEMBER 1960

Number 11

THANKSGIVING

Praise God, from whom all blessings flow,
Praise Him, all creatures here below,
Praise Him above, ye heavenly host,
Praise Father, Son, and Holy Ghost.



Board for Missions to the Deaf of The Lutheran Church—Missouri Synod

Rev. Ernest R. Drews, Chairman, 1680 W. Minnehaha St., St. Paul 4, Minn. Midway 6-1682
 Rev. Erwin E. Schroeder, Secretary, 5337 15th Ave., S., Minneapolis 17, Minn. 1 Taylor 3-2769
 Rev. Elmer W. Koberg, 1365 1st Ave., S. W., Cedar Rapids, Iowa. Empire 2-8359
 Mr. C. J. Jacobson, Financial Secretary, 1221 Blair Ave., St. Paul 4, Minn. Midway 5-4762
 Mr. E. N. Mitchell, Ph.D., 405 24th Ave., S., Grand Forks, N. Dak. 2-3892
 Rev. Wm. F. Reinking, Exec. Secretary, 210 N. Broadway, St. Louis 2, Mo. Central 1-6969

Lutheran Ministers to the Deaf

<p> Rev. Orlin S. Anderson DEfender 5-6824 51-69 74th St., Elmhurst 73, N. Y. Rev. Clark R. Bailey 3821 Forest Ave., Des Moines, Iowa Rev. Robert A. Bauer GENEva 3-7408 10503-66th Ave., Edmonton, Alta., Can. Rev. John A. Beyer EAst 4-2200 1101 15th Ave., Seattle 22, Wash. Rev. N. E. Borchardt LAkeview 7-7023 11719 Evanston Ave., Detroit 13, Mich. Rev. Wayne C. Bottlinger BRoadway 6-7143 889 North Willett, Memphis 7, Tenn. Vicar Walter L. Busby BRoadway 4-4800 726 N. Auburndale St., Memphis 7, Tenn. Rev. Robert F. Cordes 47956 204 N. Chicago Ave., Sioux Falls, S. Dak. Rev. Theo. DeLaney LOmbard 46793 2034 32d Ave., San Francisco 16, Calif. Rev. H. R. Drachenberg CHerry 9-9388 1929 Huxley St., Madison 4, Wis. Rev. A. E. Ferber LOGan 1-3849 3807 Gillham Rd., Kansas City 11, Mo. Rev. W. Ferber Adams 5-5661 617 14th St., S., Fargo, N. Dak. Rev. Theo. Frederking ACademy 1-6199 1221 Virginia Ave., Cleveland 7, Ohio Rev. G. W. Gaertner, Ph. D. LOckhaven 93881 3233 62d Ave., Oakland 5, Calif. Rev. G. A. Gehrs, Jr. REpublic 4-6515 910 S. Wilton Pl., Apt. 4, Los Angeles 19, Calif. Rev. C. Roland Gerhold HUmboldt 5-2260 510 Parker St., Newark 4, N. J. Rev. Herman Graef 556-5732 5070 Lake St., Omaha 4, Nebr. Rev. Francis G. Gyle PLaza 8-7412 1375 N. E. 137 St., North Miami 61, Fla. Vicar Andrew Harnack 419 N. Alberta St., Apt. D, Portland, Oreg. Vicar Larry Harris HUmboldt 5-2260 510 Parker St., Newark 4, N. J. Rev. A. L. Hauptman PA 1-3239 3320 — 43 Ave. S., Minneapolis 6, Minn. </p>	<p> Rev. Harry W. Hoemann RAndolph 3-0535 1728 Varnum St. N. W., Washington 11, D. C. Rev. Louis Jasper BAside 9-7024 53-13 244th St., Douglaston 62, N. Y. Rev. A. T. Jonas REpublic 5-8630 927 Gramercy Pl., Los Angeles 19, Calif. Rev. Martin Kosche SARatoga 8-3730 116 Walnut St., Delavan, Wis. Rev. Geo. R. Kraus PARKview 7-1752 6301 Alamo, St. Louis 5, Mo. Rev. W. H. Lange DUDley 8-1548 1230 Elizabeth, Denver 6, Colo. Rev. William Ludwig AXminster 9-8311 153 East Lane Ave., Columbus 1, Ohio Rev. E. Mappes 551-1529 2811 N. 66th Ave., Omaha 4, Nebr. Rev. Leroy W. Mason CALumet 5-3701 401 E. 32d St., Apt. 2114 Chicago 16, Ill. Rev. Gene E. Merrell FLEetwood 7-3378 2029 N. Emerson, Indianapolis 18, Ind. Rev. Martin E. A. Mueller Hilltop 5-7230 2571 N. Grant Blvd., Milwaukee 10, Wis. Rev. Ervin Oermann UNDERwood 9-2726 110 Byrne, Houston 9, Tex. Rev. W. F. Reinking TEMple 7-8753 1615 Trotter Way, Florissant, Mo. Rev. Geo. C. Ring ATLantic 1-9589 4807 N. E. Rodney Ave. Portland 11, Oreg. Rev. Herbert W. Rohe GREENfield 8291 1369 East Ave., Rochester 10, N. Y. Rev. Rodney Rynearson FAirfax 8-9673 3614 W. Wellesley, Spokane 15, Wash. Rev. J. L. Salvner, D. D. JUNiper 8-8411 4503 Hampton Road, N., Minneapolis 22, Minn. Rev. E. Scheibert BELmont 5-7480 1400 N. Ridgeway Ave., Chicago 51, Ill. Rev. Earl J. Thaler JACKson 3-8386 32 Brunswick Ave., W. Hartford 7, Conn. Rev. Delbert Thies CHEstnut 3-2528 104 Finley St., Jacksonville, Ill. Rev. Frank Wagenknecht FREmont 1-7064 1335 Commercial St., Pittsburgh 18, Pa. Rev. W. Westermann BRoadway 4-7251 323 McIver St., Greensboro, N. C. </p>
---	--

Rev. O. C. Schroeder, B. D., 1648 E. 85th St., Chicago 17, Ill. — REgent 4-3621
 (Serving the Deaf and the Blind)

These ministers preach in more than 275 cities in our land; they conduct classes in religion at over 50 city and state schools for the Deaf. You will find them ready to serve you; call upon them or write to them. The Deaf need God's Word.

THE DEAF LUTHERAN

Official Paper of the Board for Missions to the Deaf
 The Lutheran Church—Missouri Synod

Published monthly by Concordia Publishing House, St. Louis 18, Mo. Subscription price, \$1.00 per year. Second-class postage paid at St. Louis, Mo.

The DEAF LUTHERAN goes to press on the 3d Friday, two weeks before issue. Send all news, pictures, stories, and articles to Rev. Harry W. Hoemann, B. D., Editor, 1728 Varnum St. N. W., Washington 11, D. C.

Send subscriptions, address changes, and cancellations to The DEAF LUTHERAN, 210 N. Broadway, St. Louis 2, Mo.

A Roman Catholic for President?

Headlines like the one above are sad to behold. I am quite sure that the Democratic Party did not nominate Senator Kennedy for the Presidency of the United States because he is a Roman Catholic. More likely the party nominated him in spite of his church affiliation, hoping it would not become an important issue of the campaign. The headline above is sad because it calls attention to the fact that Senator Kennedy is a Roman Catholic and gives the impression that this is the *most* important issue in the campaign. It will probably lead many Roman Catholics to vote for the Senator from Massachusetts because he is a Roman Catholic and many Protestants to vote against him for the same reason, with charges of bigotry and prejudice on both sides. Perhaps the votes will cancel each other out, but charges of bigotry aren't disposed of as easily as old ballots.

A second sad situation is the confusion which arises every time the so-called "religious issue" is raised in the campaign. On the one hand, one can legitimately wonder whether Senator Kennedy, because he is a Roman Catholic, can with a good conscience carry out the oath of office of the President of the United States and carefully maintain a separation between church and state. On this point Senator Kennedy has repeatedly said that he could and that he would. On the other hand, one can legitimately wonder whether the Roman Catholic hierarchy, the pope at Rome, the College of Cardinals, the Roman Catholic archbishops and bishops agree. The hierarchy has, at least up to the time of this writing, said nothing.

Now when Senator Kennedy states that he would make his decisions in accordance with what his conscience tells him to be the national interest, and without regard to outside religious pressures and dictates, I believe him. To question his honesty is to question his loyalty. I have no desire to do either.

I also believe that it is unfortunate that the religious issue has become as big an issue as it has for this campaign for the Presidency. As I said before, it makes sad headlines. I hope I would be having a bad dream if I should open a newspaper and read, "Presbyterian Hits Home Run," "Episcopalian Forecasts Business Decline for 1960," "Lutheran Criticizes Federal Spending."

I would also like to pause to think what might happen should Senator Kennedy be President Kennedy a couple months from now. Anyone who claimed that a vote for Kennedy was a vote for the Roman Catholic Church would then have to admit that the Roman Catholic Church won the election. It didn't, and it won't. But Senator Kennedy might.

Since I am a resident of the District of Columbia, I will be voting for or against no one in the November election. But chances are you will be, and there are a few things which you ought to keep in mind.

1. If anyone tries to tell you that Senator Kennedy will turn this country into a country run by the pope, don't believe him. I doubt very much that he could, and I honestly believe that he wouldn't.

2. If anyone tries to tell you that the Roman Catholic Church teaches

a doctrine of the separation of church and state, don't believe him either. Many Americans, including Roman Catholic Americans, may think it does or wish it did, but it doesn't. It permits such a situation to exist, but it does not teach that the church and state ought to be separate.

3. Besides the freedom to assemble peaceably to practice your religion, you are also free to vote for the candidate of your choice. Let nothing, not even charges of bigotry, prejudice, or intolerance, keep you from voting for the candidate you choose for any reason you consider important enough to influence your decision. Always remember that charges of intolerance often backfire. If I were to charge you with being intolerant because you refuse

to vote for my candidate, I am as much as confessing that I am intolerant of you because you refuse to do so. It is quite possible to become intolerant of intolerance.

4. In any election, including this one, it is not so important whom you support as why. I sincerely hope that you will study *all* the important issues in this campaign before you cast your ballot. Pray that God will guide you in your choice. Continue to pray for the President of the United States, whoever he may be next year, that he will be a good leader for the country. I hope I can take it for granted that you intend to vote. When you do, vote for the man you want to call *your* President. And may the people's choice win. He will, I'm sure.

H. W. HOEMANN

Notes from the Executive

Now that we have completed the ten years of the 1950s, many people look back to see what has happened in business, the government, and the churches during those ten years. This month I would like to share with you the great blessings that God has poured out on our mission during the '50s.

We began 1950 with 3,434 communicant members in our mission, and 30 organized congregations. After ten years we now have 4,844 members or a 43 per cent increase. Our congregations have also increased to 38 at the present time. In order to meet this increase in the number of congregations and communicant members, our mission staff has also increased under the blessing of God. 1950 saw us have a mission staff of 28 full-time missionaries, 3 part-time, and 2 vicars. At the present

time we have 38 full-time missionaries, 3 part-time, and 3 vicars.

The new missionaries were placed into the following cities during the '50s: Edmonton, Alberta, Canada; San Francisco, Calif.; Denver, Colo.; Houston, Tex.; Oklahoma City, Okla.; Madison, Wis.; Greensboro, N. C.; Rochester, N. Y.; and West Hartford, Conn.

We were also able to place a second missionary into the following cities: New York, Chicago, Omaha, and Los Angeles.

We not only saw our mission increase in number of communicants but also have by the grace of God been able to expand our work in our various schools for the Deaf. In 1950 our missionaries were working with 1,089 children in 46 schools in the U. S. and Canada. This year

we are privileged to work with 2,288 children in 73 schools throughout the U. S. and Canada. Over and above that number of children we also have about 1,500 children for whom we conduct chapel services each month.

When a mission expands, such as ours has, it is necessary to have more buildings, and so during the last ten years Synod, together with our congregations, has purchased 4 parsonages, 3 chapels, 2 chapel-parsonages, and a lot for a future chapel. We have also built 2 new parsonages and 4 new chapels. Much of this money for these buildings has come as a direct gift from Synod or as loans from the General Church Extension Fund. We still encourage you to invest your savings in the General Church Extension Fund to build for the future of our church.

It is very good to see that our members have more and more realized their responsibility to support the work of the church and have shown that in their gifts. In 1950 our members contributed \$45,359 for home purposes and \$6,485 for outside purposes, making a total contribution of \$51,844. In 1960 these

contributions had increased to \$107,407 for home purposes, \$20,949 at large, for a total of \$128,356. This amounts to a 147 per cent increase in the giving of our members.

However, this is not the total cost of our mission. At the present time our members contribute about one fourth of the total cost of our Deaf Mission. In 1950 the cost of Synod's support of our Deaf Mission was \$104,500. In 1960 the cost will run close to \$355,000, or an increase of 239 per cent. Each year as our mission expands and as the cost of the mission increases, Synod is being asked to increase its support. It is quite necessary that our members become aware of this increase and show their willingness to share this responsibility.

As we look back over these ten years all we can say is, all thanks and praise be to God for His gracious blessings upon our mission. As we look ahead to the next ten years we implore God to continually pour out His blessings upon us that through our mission thousands of deaf both here in our country and in foreign lands will come to know the Savior, who died for all.

W. F. REINKING

Ephphatha Conference

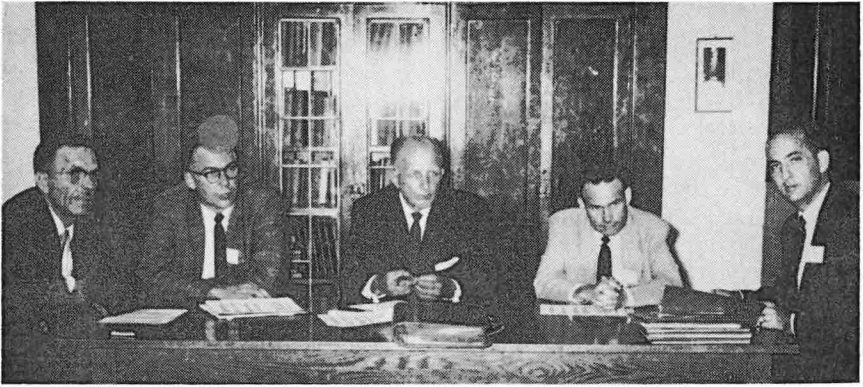
Second Report

The Board for Missions to the Deaf of The Lutheran Church — Missouri Synod plans and administers the program of church work among the Deaf which is carried out by the Lutheran Deaf congregations served by the 38 pastors who are members of Ephphatha Conference.

The annual Ephphatha Conference of Lutheran pastors to the Deaf is held, not only so that the pastors

may share with one another their experiences and their skills in serving the Deaf, but also so that the Board for Missions to the Deaf may report to the conference the program which it feels should be undertaken and confer with the pastors individually on special projects in their particular fields.

The board and its Executive Secretary met at the Lutheran School



The Board for Missions to the Deaf in session at the Ephphatha Conference. Left to right, Rev. Elmer W. Kobert, Cedar Rapids, Iowa; Chairman Ernest Drews, St. Paul, Minn.; Secretary Erwin E. Schroeder, Minneapolis, Minn.; E. N. Mitchell, Ph. D., Grand Forks, N. Dak.; Executive Secretary William F. Reinking, St. Louis, Mo. Not pictured: C. J. Jacobson, Financial Secretary, St. Paul, Minn., and Advisory Member J. P. Miller, Minneapolis, Minn.

for the Deaf in Detroit July 18 to 21 for this double purpose. Monthly meetings are held throughout the year to keep the members of the board informed on details of the Deaf mission program of the Lutheran Church and to enable the board to pass such resolutions as it feels are proper for specific requests.

The Board for Missions to the Deaf has a double responsibility. It is responsible to the Deaf and to Lutheran Deaf congregations in North America to provide for them such pastors and such aids for their spiritual life as will permit them to exercise their faith and extend the kingdom of God. It is responsible to Synod for the proper distribution of funds which are given to the missions treasury of The Lutheran Church—Missouri Synod by Lutherans everywhere and are then allocated for the support of the Deaf missions program.

The board believes that a part of its first responsibility is fulfilled by holding an annual conference of pastors to the Deaf, that they may benefit by the intensive concentra-

tion of four days of presentations and discussions designed to improve their ministry. The individual conferences with pastors held throughout the four-day sessions also provide the board with the opportunity to meet with the pastors who are under its direction in an informal way and to discuss the parish work of the pastor's field.

The Executive Secretary of the board may visit the mission field at any time during the year to appraise its future needs and its areas of growth. The Executive Secretary also receives regular reports from the pastors to the Deaf, studies them, and reports on them to the board in its monthly meetings.

The net effect of all this careful planning by an efficient Board for Missions to the Deaf is a well-organized program for the Deaf by the Lutheran Church and by its pastors who serve the Deaf. Not only is the board prepared to give its prompt attention to any Deaf congregation requesting its guidance, it is also prepared to project long-range plans for the expansion of the Lutheran

churches of the Deaf in the years ahead.

But the Board is also responsible to Synod for the proper use of the funds allocated to the Deaf mission program. At the annual Fiscal Conference, held this year at Valparaiso, Ind., during the middle of September, the board must place its request for support from Synod for the next fiscal year, justify the need for the money requested, and then spend it wisely as the members of the board believe it ought to be spent according to the purposes of God and of His church on earth.

The amount of money for which the board is responsible is a large sum. As its Executive Secretary mentioned in his "Notes" for this issue of the DEAF LUTHERAN, in 1960

the amount was close to \$355,000, an increase of 239 per cent over 1950.

An important part of the report made by the board to the Ephphatha Conference was concerned with this responsibility of the board to cope with increases in the cost of the Deaf mission program. While the total cost was increasing 239 per cent, contributions from Deaf congregations were increasing, but at the rate of 147 per cent over the ten-year period. In order to provide for an increase in the number of Lutheran pastors serving the Deaf in the future, and to meet specific needs of Deaf congregations, the board sincerely hopes that contributions by Deaf members of Lutheran congregations will keep pace with the growth in the total program.



Executive Secretary William F. Reinking, right, confers with his predecessor, Dr. J. L. Salvner, over the report by the Executive Secretary to the Ephphatha Conference

During the next three years the Board for Missions to the Deaf will authorize the spending of over \$1,000,000 for the Deaf mission program of The Lutheran Church — Missouri Synod. Unless the Deaf increase their support of their church, two thirds of this one million dollars will have to come from gifts of people who are not Deaf.

The board asked members of the Ephphatha Conference to report to their congregations the true picture of the financial needs of the Deaf mission program for 1960 and for

the years ahead so that the growth of the church need not be hampered by a lack of funds.

Members of the Board for Missions to the Deaf and Executive Secretary William Reinking will continue to serve Lutheran Deaf congregations and The Lutheran Church — Missouri Synod to the best of their ability. The presence of the board at the Ephphatha Conference is an important part of the conference program and a great help to the mission program of the Deaf.

Summer Camp for the Deaf in New England

New Preston, Conn. Forty-three deaf boys and girls eight years old and up attended the North East Christian Summer Camp for the Deaf at New Preston, Conn., for two weeks beginning June 25, 1960.

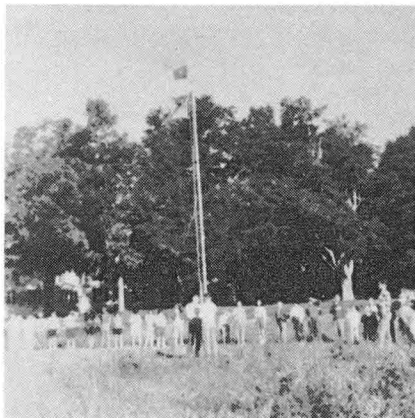


Pastor Earl Thaler, standing at the back of the room, conducts a daily morning Bible class for senior boys at the North East Christian Summer Camp for the Deaf

Students from the following schools attended the nondenominational summer camp: American School for the Deaf, West Hartford, Conn.; Austine School for the Deaf, Brattleboro, Vt.; Rhode Island

School for the Deaf, Providence, R. I.; Mystic Oral School for the Deaf, Mystic, Conn.; Rochester School for the Deaf, Rochester, N. Y.; and Central New York School for the Deaf, Rome, N. Y.

The outstanding feature of the camp program was the daily morning Bible classes. Other activities were handicrafts, swimming, base-



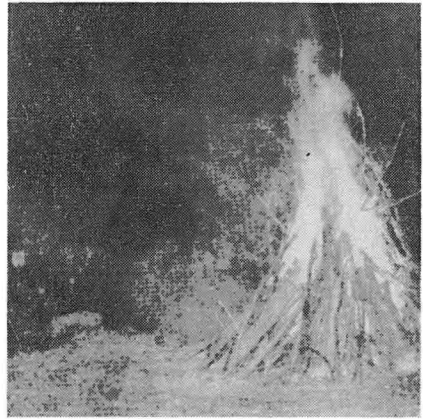
The morning flag raising ceremony. Each morning the flags were raised with the recitation of "The Pledge of Allegiance to the Cross" and "The Pledge of Allegiance to the Flag." In the evening the flags were lowered with the campers joining in the "Doxology"



Reward for a hike: a picnic at Lake Waramaug in the foothills of the Berkshire Mountains

ball, outdoor basketball, lawn games, and boating.

Three special outings were included in the program. An all-day hike through the woods to Lake Waramaug was climaxed by a cool swim in the lake with an evening picnic at Lake Waramaug State Park. A marshmallow roast was held at the "meeting circle" on a hilltop at the camp. An exciting "Treasure Hunt" led the campers all the way around Mountain Lake. After pushing through the woods, hiking around the lake, searching under rocks and behind trees, following winding trails, one of the girls found the "Treasure." The hunt ended with the losing team serving the winning team part of the treasure, ice-cold watermelon.



Fourth of July celebration. The campers gathered the wood during the day for a giant bonfire on the night of July 4

Pastor Earl Thaler of W. Hartford, Conn., has announced plans for a summer camp again next year, 1961, the last week of June and the first week of July.



Roasting hot dogs at Lake Waramaug State Park

American Hearing Society Selects Detroit Lutheran School

Detroit, Mich. The American Hearing Society has selected the Lutheran School for the Deaf in Detroit as one of the schools eligible to participate in the "Gift of

Hearing Scholarship Contest" now being conducted in the United States and Canada, it was announced by Dr. J. A. Klein, executive director. Dr. Klein explained, "The contest

offers weekly grants of \$500 preschool tuition scholarships to deserving children, with a grand prize four-year scholarship of \$2,500.

Weekly winners may select the accredited school of their choice to receive the grants or allow the selection to be made by a special committee representing the American Hearing Society. "The Detroit Lutheran School for the Deaf, a non-profit organization, was selected because of its qualified faculty and

staff members and its wide experience in the educational development of preschool deaf children," Dr. Klein announced.

Through these scholarship grants deaf children will attend special sessions in auditory training, language development and the use of a hearing aid. Hard of hearing persons are also eligible to participate. Entry blanks for the contest may be obtained from any Zenith hearing aid dealer.

Assignment of Vicar to Memphis Field Makes Possible Expansion of Services for the Deaf

Memphis, Tenn. The assignment of Walter Busby as Vicar in the Memphis Field has made possible an expansion of services for the Deaf in the Memphis Field.

Beginning in October services in Little Rock, Ark., and at Nashville, Tenn., were stepped up to twice each month. The Nashville increase applied to both services held there, the one at First Lutheran Church on the first and third Sundays and the other at the home of Mrs. Mary Rutledge on the Mondays following the first and third Sundays.

In Memphis itself both Grace and Peace congregations have scheduled weekly Sunday school classes and worship services. At Grace Church Sunday school begins at 9:45 A. M.,

with the worship service at 11 A. M. At Peace Lutheran Church the worship service begins at 9:45 A. M., with Sunday school at 11 A. M.

Four preaching stations were assigned to the Memphis Field in September. These are New Orleans and Baton Rouge, La., Jackson, Miss., and Pensacola, Fla.

Rev. Wayne Bottlinger is the Lutheran minister for the Memphis Field and the supervising pastor for Vicar Busby during his internship.

Other preaching stations in the Memphis Field besides those mentioned previously are Hot Springs, Ark., Florence, Jasper, Anniston, and Birmingham, Ala., and Atlanta, Ga.

Meditation

Psalm One Hundred

The Song of Praise by the Congregation

1. Make a joyful noise unto the Lord, all ye lands. In ancient times, when the king would make a public appearance, all the people would

gather and make a loud shout to him to show him that they honored him. God is the King of all the earth, and all the earth should make a joyful shout to Him. True unity on earth is found in the worship of the Lord.



2. Serve the Lord with gladness: Come before His presence with singing. When the faithful congregation serves the Lord, it does so with gladness. When the congregation comes before His presence in public worship it does so with singing. The worship and the service of the Lord is a joyful way of life. True joy on earth is found in service to the Lord and in coming before His presence.

3. Know ye that the Lord, He is God: It is He that hath made us, and not we ourselves; We are His people and the sheep of His pasture. There is no question in the mind of any worshiper that the Lord is God. The Lord first made man (Genesis 1—2). The Lord made Israel to be His people (Deuteronomy 32:6, Psalm 95:6). The Lord then made Israel a great nation (Isaiah 60:1). In a very special sense, Israel was God's people, and the congregation liked to compare itself to sheep in God's pasture. During the Babylonian Exile, when the Children of Israel felt as lost as do sheep who have no shepherd (1 Kings 22:17), their faith was supported by the hope that God would search for them and seek them out of all the places where they had been scattered, just as a shepherd seeks out his flock (Ezekiel 34:11 ff.). The prophet Isaiah often compared God's care for His people to the care of a shepherd for His sheep (Isaiah 40:11; 49:9; 63:14). The Psalms, too, repeat the joy and comfort that

comes with the knowledge God is like a shepherd to His people (Psalm 95:7, and especially, Psalm 23).

The Answer from Within the Temple

4. Enter into His gates with thanksgiving, and into His courts with praise: Be thankful unto Him, and bless His name. The gates and the courts show the movement of the congregation from outside the temple walls, through the gates, and into the courtyard. Verses one to three would be sung outside the temple. This is the invitation from within the temple to come inside — with thankofferings and with praise. The congregation is especially urged to make thanksgiving and praise an important part of its worship.

5. For the Lord is good; His mercy is everlasting; And His truth endureth to all generations. Three reasons are given why we should thank and praise God: He is good, He is merciful, and He is faithful. The fact that God never changes, but is always good, merciful, and faithful is brought out by the words "everlasting" and "endureth" [remains] "to all generations" [to generation after generation]. Verses four and five are based on Jeremiah 33:10, 11. After the Babylonian Exile the words became a common prayer. Even today similar words taken from Psalm 106:1 are used as a table prayer in thousands of homes. *Good* here means that God is good to His people. *Merciful* means that He is ready to forgive the sins of His people. And *faithful* means that He is dependable, that His people can trust Him to keep His promises forever.

Prepare to Meet Your God

Prepare to meet your God, my
friends,
Prepare to meet your God.
For life and death are never sure
From birth unto the sod.

Prepare to meet your God, my
friends,
'Tis easy as a nod:
Believe that Jesus died for you
And is the Son of God.

Be baptized in His holy name,
And help the feet that stray.
Forgive and be forgiven, too,
As God would do today.

The path to God is easy!
He gives you loving care.
Walk with God, and talk with God,
Strengthen your faith with prayer.

Guie Cooke



† Mr. Martin Eber †

Pittsburgh, Pa. Martin Eber, a charter member of Trinity Lutheran Church of the Deaf, Pittsburgh, Pa., departed this life suddenly on Monday, September 5. Funeral services were conducted by Rev. F. Wagenknecht. He is survived by his wife, three sisters, and two sons, Clifford and William.

Pastor Rohe Undergoes Surgery

Rochester, N. Y. Rev. H. Rohe, pastor of Alpha Lutheran Church, Rochester, N. Y., was hospitalized for surgery during the month of August. Recent reports indicate that he is recovering successfully.

Mrs. Viola Gerhold Hospitalized Briefly

Newark, N. J. Mrs. Viola Gerhold, wife of Pastor Roland C. Gerhold, Newark, N. J., was hospitalized briefly during August for acute bronchitis.

Wedding

Columbus, Ohio. Wendell Clark of Stryker, Ohio, and Miss Joan Boop of Lima, Ohio, were united in marriage on August 27 at Immanuel Lutheran Church, Lima. Rev. Donald Simon, who served the Ohio Field from 1950 to 1955, conducted the ceremony. Rev. Simon is the pastor of Christ Lutheran Church, Milford, Mich.

Rev. Gerhard Gehrs, Jr., Installed at Los Angeles

Los Angeles, Calif. Rev. Gerhard Gehrs, a June graduate of Concordia Seminary, St. Louis, was installed as assistant pastor of Pilgrim Lutheran Church, Los Angeles, and associate pastor to the Deaf in Southern California on Sunday, July 31, 1960.

Pastor Gehrs replaces Rev. William Lange, who accepted a call to the Deaf mission field at Denver, Colo., in May of 1960.

Rev. Armin Hesse, Third Vice-President of the Southern California District, delivered the sermon, "The Christian Ministry, a Desirable Pro-



Rev. Gerhard Gehrs, Jr.

fession." The rite of installation and commissioning was performed by Rev. Walter Niermann, Circuit Counselor, assisted by pastors Hesse and Jonas.

After the service a welcoming social was held in the parish hall for Pastor and Mrs. Gehrs, formerly Miss Marilyn Moore of North Miami, Fla. They were married June 18.

Prepare to Meet Your God

The poem, "Prepare to Meet Your God," found elsewhere in this issue of the DEAF LUTHERAN, was written by a member of Hope Lutheran Church for the Deaf in Portland, Oreg., Mrs. Guie Cooke, for the eleventh annual Northwest Lutheran Conference for the Deaf held this year at Portland, Oreg., July 1-4.

Son Born to the Reinkings

St. Louis, Mo. David Michael Reinking was born on September 10, 1960, to the Executive Secretary, William F. Reinking and Mrs. Reinking.

Evening with Pastor

Chicago, Ill. Pastor Leroy Mason of Ephphatha Lutheran Church of the Deaf in Chicago has inaugurated a series of "Evenings with Pastor" at his home. Groups of ten to fifteen Deaf are invited each week to have dinner with the pastor. Afterwards a colored filmstrip called Our Christian Responsibilities is shown. Pastor Mason then leads a discussion with the group on the ideas presented in the filmstrip. By September 15, 40 persons had attended one of these evenings with the pastor.

Sign Language Class in Chicago

Chicago, Ill. Ephphatha Lutheran Church of the Deaf, 74th St. and S. Michigan Ave., Chicago, is sponsoring a class in sign language for parents and friends of the Deaf. About 15 persons are attending the sessions conducted by Rev. Leroy Mason, pastor of Ephphatha Congregation.

Church Picnic

Pittsburgh, Pa. Approximately 60 Deaf attended the picnic held by Trinity Lutheran Church of the Deaf of Pittsburgh at Luther Crest, Cabot, Pa. Pastor Wagenknecht reports that all enjoyed a day of fun and relaxation except for John Saraka, member of the picnic committee, who was so stiff the following day he could hardly walk. The picnic concluded with a vespers service conducted by Rev. F. Wagenknecht.

Loyalty Sunday

Chicago, Ill. Ephphatha Lutheran Church of the Deaf in Chicago celebrated "Loyalty Sunday" on the last Sunday in August. Pastor Leroy Mason reports that 76 adult Deaf attended the special thanksgiving service.

Baptism

Chicago, Ill. Thomas Moore, Jr., was baptized into the Christian faith on July 31 at Ephphatha Lutheran Church of the Deaf, Chicago, Ill. Rev. Leroy Mason officiated.

Baptism

Colorado Springs, Colo. Dee Ann Hardy, infant child of Mr. and Mrs. Jack Hardy, was baptized at Immanuel Lutheran Church, Colorado Springs, Colo., on August 21. Mr. and Mrs. Marion Keliher served as sponsors.

Services for the Deaf in Wyoming

Denver, Colo. Rev William Lange of Denver, Colo., recently made a three-day trip through Cheyenne, Casper, and Torrington, Wyo., with church services held at Cheyenne and Casper. Eight attended the Cheyenne service, with four attending at Casper.

Midwest Conference of Lutheran Lay Members of the Deaf and Pastors

Kansas City, Mo. "Give the Word Out" was the motto for the Midwest Conference for Pastors and Laymen in Kansas City, Mo., August 27 and 28. The motto was based on Psalm 68:11.

Pilgrim Lutheran Church for the Deaf, 3801 Gillham Road in Kansas City, was host to the pastors and laymen from the Midwest Region attending the two-day meeting.

Topics presented by delegates included "Why We Should Witness," "What Tools We Use for Witnessing," and "What Good Does Witnessing Do for Others?"

Reports for their respective offices were given by pastors A. Burroughs and T. Schoech for District and Synod, Pastor A. E. Ferber, Regional Counselor, and Rev. William F. Reinking, Executive Secretary. Superintendent Stanley D. Roth delivered a lecture on "Religious Bible Training in Schools."

Deaf Mission Society

Washington, D. C. The constitution of the Deaf Mission Society is going to be rewritten for presentation to the 1961 Ephphatha Conference.

The final form of the constitution will need to reflect the answers to three pertinent questions:

1. How shall the membership of the Deaf Mission Society be defined? (Shall we have a carefully maintained membership list with specific requirements for membership and regular dues, or shall the membership be loosely defined with any supporter or contributor construed as a member with no regulated membership list?)

2. What shall be the society's internal structure? (Shall the society have officers, executive meetings, and regular official reports, or shall the society have no executive committee, functioning rather as an auxiliary to the Board for Missions to the Deaf, with the board or the Ephphatha Conference performing the functions of an executive committee?)

3. Who shall have the authority to allocate funds from the treasury for particular mission projects?

(The answer to this question will be determined to some extent by the answers to one and two. But there are several alternatives: a) the Board for Missions to the Deaf, b) the Ephphatha Conference, c) Regional conferences or conventions, or d) the Executive Committee, if there is one.)

This is an open invitation to Lutheran pastors and to Lutheran Deaf or any other interested person to make known his preferences with regard to the questions posed above. Send your comments to the DEAF LUTHERAN, 1728 Varnum St. N. W., Washington 11, D. C.

Nassau Service at New Location

New York, N. Y. Services for the Deaf in Nassau County are held at St. Peter Lutheran Church, 2332 Grand Road, Baldwin, N. Y., since September 4. The site is centrally located and reached easily by bus. Services are held at 8 P. M. every Sunday, with Holy Communion on the first and third Sundays.

Dr. O. C. Schroeder Makes Final Trip through Northern Michigan

Chicago, Ill. Dr. O. C. Schroeder, retiring Lutheran pastor to the Deaf—Blind, has made what may be his final trip to Northern Michigan for services for the Deaf there.

During the past summer, July and August, Pastor Schroeder conducted 11 services for the Deaf, interpreted 1 service, and held 19 instruction classes. At St. Luke's Hospital in Marquette, Mich., Paul David Mitchell was baptized.

Rev. W. Paulson of Newberry, Mich., who studied the sign language with Pastor Delbert Thies of Jacksonville, Ill., may serve the Deaf in the Marquette area in the future.

Tennessee Association of the Deaf Supports Committee on Mental Health

Memphis, Tenn. In its convention held August 18 to 21 the Tennessee Association of the Deaf gave its wholehearted support to the Committee on Mental Health established in its 1958 convention in Memphis.

Rev. Wayne Bottlinger, Lutheran minister to the Deaf in the Memphis Field, has accepted the invitation of the Association to serve on the committee.

Bible Class Picnic

West Hartford, Conn. The Bible class of the Hartford and West Hartford area held a summer picnic at the home of Pastor and Mrs. Thaler on August 17. About 40 people were in attendance. The group enjoyed hot dogs, salads, cakes, and other refreshments, and outdoor movies in the evening.

Pastor and Mrs. Graef Adopt Infant Daughter

Omaha, Nebr. Pastor and Mrs. Herman Graef of Omaha, Nebr., have adopted an infant daughter, Kathleen Louise. Kathleen was born July 18. She came to her home with the Graefs on August 17. She was scheduled to be baptized on September 4.

New Preaching Station at Columbus, Nebr.

Omaha, Nebr. A new preaching station was opened in the Omaha Field at Columbus, Nebr., during September. The first service was held September 18 at Immanuel Lutheran Church, 2404 Fourteenth St. Services in Columbus will be held every other month alternating with Nebraska City.



Devotions

“Light for Your Way”

Daily Bible Readings for November

November 1 — 3 John 1-15	November 15 — Acts 9:20-30
November 2 — Revelation 1:1-20	November 16 — Galatians 1:11-24
November 3 — Revelation 22:8-21	November 17 — Acts 11:19-30
November 4 — Luke 5:27-32	November 18 — Acts 13:1-12
November 5 — Matthew 10:1-15	November 19 — Acts 13:44-52
November 6 — Matthew 2:13-23	November 20 — Acts 14:8-23
November 7 — John 3:1-15	November 21 — Acts 15:1-21
November 8 — 7:32-52	November 22 — Acts 15:36-41
November 9 — John 19:38-42	November 23 — Acts 16:6-15
November 10 — Acts 6:1-6	November 24 — Romans 8:31-39
November 11 — Acts 6:8-15	November 25 — Acts 16:17-40
November 12 — Acts 7:51-60	November 26 — Acts 17:16-34
November 13 — Acts 7:54-8:1	November 27 — Isaiah 62:10-63:9
November 14 — Acts 9:1-19	November 28 — Acts 19:1-20
	November 29 — 2 Corinthians 12:1-10
	November 30 — Acts 20:7-17

“O give thanks unto the Lord, for He is good; for His mercy endureth forever.” (Psalm 106:1)

ORDER FORM

THE DEAF LUTHERAN


210 N. Broadway, St. Louis 2, Mo.

Subscription Price: \$1 per Year

Amount enclosed \$_____

New

Renewal

If Renewal, please send address label. 

Please print name and address. Thank you.

Name _____

Street or Route _____

City _____ Zone _____

State _____