

The Deaf Lutheran



*Ephphatha, that is,
Be opened.*

MARK 7:34

Volume 53

MAY 1961

Number 5



"Come Unto Me"

Board for Missions to the Deaf of The Lutheran Church — Missouri Synod

Rev. Ernest R. Drews, Chairman, 1680 W. Minnehaha St., St. Paul 4, Minn. Midway 6-1682
 Rev. Erwin E. Schroeder, Secretary, 5337 15th Ave., S., Minneapolis 17, Minn. TAYlor 3-2769
 Rev. Elmer W. Koberg, 1365 1st Ave., S. W., Cedar Rapids, Iowa. EMpire 2-8359
 Mr. C. J. Jacobson, Financial Secretary, 1221 Blair Ave., St. Paul 4, Minn. Midway 5-4762
 Mr. E. N. Mitchell, Ph. D., 405 24th Ave., S., Grand Forks, N. Dak. 2-3892
 Rev. Wm. F. Reinking, Exec. Secretary, 210 N. Broadway, St. Louis 2, Mo. Central 1-6969

Lutheran Ministers to the Deaf

Rev. Orlin S. Anderson DEFender 5-6824
 51-69 74th St., Elmhurst 73, N. Y.
 Rev. Clark R. Bailey
 3821 Forest Ave., Des Moines, Iowa
 Rev. Robert A. Bauer GENeva 3-7408
 10503-66th Ave., Edmonton, Alta., Can.
 Rev. John A. Beyer EAST 4-2200
 1101 15th Ave., Seattle 22, Wash.
 Rev. N. E. Borchardt LAkeview 7-7023
 11719 Evanston Ave., Detroit 13, Mich.
 Rev. Wayne C. Bottlinger BRoadway 6-7143
 889 North Willett, Memphis 7, Tenn.
 Vicar Walter Busby BRoadway 4-4880
 726 N. Auburndale St., Memphis 7, Tenn.
 Rev. Robert F. Cordes EDison 2-6261
 204 N. Chicago Ave., Sioux Falls, S. Dak.
 Rev. Theo. DeLaney LOMBard 46793
 2034 32d Ave., San Francisco 16, Calif.
 Rev. H. R. Drachenberg CHerry 9-9388
 1929 Huxley St., Madison 4, Wis.
 Rev. A. E. Ferber LOGan 1-3849
 3807 Gillham Rd., Kansas City 11, Mo.
 Rev. W. Ferber ADams 5-5661
 617 14th St., S., Fargo, N. Dak.
 Rev. Theo. Frederking ACademy 1-6199
 1221 Virginia Ave., Cleveland 7, Ohio
 Rev. G. W. Gaertner, Ph. D.
 LOCKhaven 93881
 3233 62d Ave., Oakland 5, Calif.
 Rev. G. A. Gehrs, Jr. REPUBLIC 4-6515
 910 S. Wilton Pl., Apt. 4,
 Los Angeles 19, Calif.
 Rev. C. Roland Gerhold HUMBoldt 5-2260
 510 Parker St., Newark 4, N. J.
 Rev. Herman Graef 556-5732
 5070 Lake St., Omaha 4, Nebr.
 Rev. Francis G. Gyle PLaza 8-7412
 1375 N. E. 137 St., North Miami 61, Fla.
 Vicar Andrew Harnack
 419 N. Alberta St., Apt. D,
 Portland, Oreg.
 Vicar Larry Harris HUMBoldt 5-2260
 510 Parker St., Newark 4, N. J.
 Rev. A. L. Hauptman PA 1-3239
 3320 — 43 Ave. S., Minneapolis 6, Minn.
 Rev. Harry W. Hoemann RANDolph 3-0535
 1728 Varnum St. N. W.
 Washington 11, D. C.
 Rev. Louis Jasper BAYSIDE 9-7024
 53-13 244th St., Douglaston 62, N. Y.
 Rev. A. T. Jonas REPUBLIC 5-8630
 927 Gramercy Pl., Los Angeles 19, Calif.
 Rev. Martin Kosche SARatoga 8-3730
 116 Walnut St., Delavan, Wis.
 Rev. Geo. R. Kraus PARKVIEW 7-1752
 6301 Alamo, St. Louis 5, Mo.
 Rev. W. H. Lange DUDLEY 8-1548
 1230 Elizabeth, Denver 6, Colo.
 Rev. William Ludwig AXMINSTER 9-8311
 153 East Lane Ave., Columbus 1, Ohio
 Rev. E. Mappes 551-1529
 2811 N. 66th Ave., Omaha 4, Nebr.
 Rev. Leroy W. Mason CALUMET 5-3701
 401 E. 32d St., Apt. 2114
 Chicago 16, Ill.
 Rev. Gene E. Merrell FLEETWOOD 7-3378
 2029 N. Emerson, Indianapolis 18, Ind.
 Rev. Martin E. A. Mueller HILLTOP 5-7230
 2571 N. Grant Blvd., Milwaukee 10, Wis.
 Rev. Ervin Oermann UNDERWOOD 9-2726
 110 Byrne, Houston 9, Tex.
 Rev. W. F. Reinking TEMPLE 7-8753
 1615 Trotter Way, Florissant, Mo.
 Rev. Geo. C. Ring ATLANTIC 1-9589
 4807 N. E. Rodney Ave.
 Portland 11, Oreg.
 Rev. Herbert W. Rohe GREENFIELD 8291
 1369 East Ave., Rochester 10, N. Y.
 Rev. Rodney Rynearson FAIRFAX 8-9673
 3614 W. Wellesley, Spokane 15, Wash.
 Rev. E. Scheibert BELMONT 5-7480
 1400 N. Ridgeway Ave., Chicago 51, Ill.
 Rev. Earl J. Thaler JACKSON 3-8386
 32 Brunswick Ave., W. Hartford 7, Conn.
 Rev. Delbert Thies CHESTNUT 3-2528
 104 Finley St., Jacksonville, Ill.
 Rev. Frank Wagenknecht FREMONT 1-7064
 1335 Commercial St., Pittsburgh 18, Pa.
 Rev. W. Westermann BRoadway 4-7251
 323 McIver St., Greensboro, N. C.
 Rev. O. C. Schroeder, D. D., 1648 E. 85th St., Chicago 17, Ill. — REgent 4-3621
 (Serving the Deaf and the Blind)

These ministers preach in more than 275 cities in our land; they conduct classes in religion at over 50 city and state schools for the Deaf. You will find them ready to serve you; call upon them or write to them. The Deaf need God's Word.

THE DEAF LUTHERAN

Official Paper of the Board for Missions to the Deaf
 The Lutheran Church — Missouri Synod

Published monthly by Concordia Publishing House, St. Louis 18, Mo. Subscription price, \$1.00 per year. Second-class postage paid at St. Louis, Mo.

The DEAF LUTHERAN goes to press on the 3d Friday, two weeks before issue. Send all news, pictures, stories, and articles to Rev. Harry W. Hoemann, B. D., Editor, 1728 Varnum St. N. W., Washington 11, D. C.

Send subscriptions, address changes, and cancellations to The DEAF LUTHERAN, 210 N. Broadway, St. Louis 2, Mo.



Editorials

"Come Unto Me"



Come unto Me, all ye that labor and are heavy laden, and I will give you rest. (Matthew 11:28)

Our Savior's invitation "Come unto Me" is a great comfort to Christians everywhere in time of trouble. When grief, illness, poverty, pain, or any misfortune strikes, these words have power to soothe and help.

The words have power to help, not because of what they say. If you or I or any other person were to speak these words, they would be a vain boast. These words have power to help because it was Jesus who spoke them. He has power to help, and His words have power to bring that help to those who believe them.

The rest that Jesus promises is not the ease and comfort of a soft chair. Jesus grants rest for the soul. Far from letting us sit down and do nothing, Jesus gives us the mental balance and courage to take His yoke and learn from Him. (V. 29)

Accept His invitation. Take His yoke. Learn from Him. Come to Him for rest. He will grant it as surely as He has promised it.

Christian Family Week May 7 to 14

The Lutheran Church — Missouri Synod has designated May 7 to 14 as Christian Family Week. It has done so not to call special attention to the week of May 7 to 14 but to call special attention to the need for Christian families to live like Christian families.

A Christian family is a family whose members are Christian. But the description cannot stop there. The members of a baseball team may be Christians, but this doesn't

necessarily mean that it is a Christian baseball team. Being a Christian family means that the individual Christian faith of its members has an effect on the family relationship. A Christian family is one whose members are Christian and whose Christian faith has an effect on the way the members of the family deal with one another and on the way the family deals with common problems and interests.

For a Christian family to act as a

Christian family the faith of each member must be strong enough to show. If the fact that a member of the family is a Christian seems to make no difference in the way he thinks or feels or acts, then that member of the family will not add anything to the family relationship to make it Christian. One may well wonder whether such a person is really a Christian at all. A person whose faith is genuine will think and feel and act like a Christian both toward the members of his family and toward the world in general. Your task as a Christian is to cultivate such a genuine faith that it will make a difference in the way you live — with your family and as a family.

The family which is Christian automatically becomes a different kind of family than one which is not Christian. It is a family which shares concepts of love, forgiveness, and salvation. These are not a part of the thinking of families whose members are living in the darkness of unbelief. It shares a hope which other families do not have.

Families are the result of marriage and of having children. Both are ordained by God, and so the family relationship has the mark of God upon it. But God wants families to be Christian families, and He has redeemed men, women, and children who are members of families to be Christian families.

Hearing parents of deaf children and deaf parents of hearing children have a particular handicap in forming and living as a Christian family. The distance which may separate the deaf members of a family from the hearing members may make the sharing of a common faith in a common Savior more difficult. Deaf parents of hearing children will have to make special efforts to see that their children receive adequate instruction in the Christian religion both at home and in Sunday schools and churches. Hearing parents of deaf children will have to make special efforts to see that their children receive the kind of instruction which they need to learn the truths of God's Word. And in the home the hearing and deaf members of the family will have to make special efforts to share their feelings and their activities with one another and to make sure that their faith has something to do with the kind of feelings and activities they share.

It is not easy, but it can be done. God will have it done, for it is His will that members of a family share their faith with one another and be Christian families. Pray that God will grant families comprised of deaf and hearing members a special measure of His grace that they may be what He wants them to be: Christians joined together in a wholesome family relationship and families which are truly Christian.

How to Destroy the Church

Satan has come up with a simple formula for wiping out Christian congregations throughout the United States in a few months time. His

scheme is so easy that its results could be terrifying. In a few words, the devil's plan is: "Everybody stay home from church."

It's as easy as that. If on Sunday morning for about six months straight everybody would stay home, think what might happen to many congregations. The buildings would begin to deteriorate from lack of maintenance. Pastors would have to seek other jobs to support their families. Congregational activity would come to a standstill.

Already many congregations have been weakened by the devil's program. In many cases fewer than half of the members are in church

on Sunday morning. A staggering number give an average of only a few pennies a week to its support.

Satan will not win. Jesus has promised that the gates of hell will not prevail against His church. But when the battle lines are drawn between the devil and the church, whose side will you be on? Will you follow the devil's advice and stay home? Or will you be on the Lord's side, regularly attending church on Sunday morning?

Notes from the Executive

Rev. Oermann Accepts Call to Alabama

The Rev. Ervin Oermann, missionary to the Deaf in the Texas field with headquarters at Houston, Tex., has accepted the call to be the first resident missionary in the new Alabama field with headquarters to be located at Birmingham, Ala. Rev. Oermann graduated from Concordia Seminary, St. Louis, Mo., in June of 1953 and immediately accepted a call to become missionary to the Deaf in Texas. Rev. Oermann had had some training in the sign language while at the seminary, and Dr. Salvner spent several weeks with him to further train him in the work among the Deaf. Rev. Oermann has carried much responsibility of our church's work in the Deep South and Southwest. He originally had the Texas-Oklahoma field, but the Oklahoma part of the field was cut off when Pastor Sampson took the call to be the first resident missionary to Oklahoma City. After that, Pastor Oermann took over the responsibility for the Mississippi and Louisiana field for sev-

eral years. When the vicar was placed in Memphis in September of last year, Pastor Oermann gave up the responsibility for Louisiana and Mississippi but took over again in Oklahoma, since Pastor Sampson had accepted a call to Nevada. So Pastor Oermann brings to Alabama a rich background of experience in work among the Deaf.

Rev. Oermann and his wife, Betty Lou, and their children (Tim, 8; David, 5; Chris, 1), will move to Birmingham some time in June. Rev. Oermann's field will cover the Negro and white schools for the Deaf in Talladega, Ala., and also in Cave Springs, Ga., along with preaching stations in Jasper, Gadsden, Anniston, and Birmingham, Ala.; Atlanta, Ga.; and Pensacola, Fla.

Rev. Frederking Called to Texas

The Board of Missions to the Deaf has called the Rev. Theo. Frederking of Cleveland, Ohio, to take over the work in the Texas-Oklahoma field now that Rev. Oermann has accepted the call to Alabama. No decision has been made at the

time of this writing regarding the call.

Rev. Merrell Has Call to Hearing Congregation

The Rev. Gene Merrell of Indianapolis, Ind., has been called as pastor to Christ and Immanuel congregations (hearing) in Albany, Minn. At the time of this writing Rev. Merrell has not yet determined whether or not he will accept this call.

Board Asks for More Help from the Seminaries

The Board of Missions to the Deaf has requested three vicars and at least one candidate from the 1961 classes of our seminaries at Springfield, Ill., and St. Louis, Mo. These additional men will allow for concentrated work in some areas and expanded work in other areas. More information on this concentration and expansion will be in this column next month.

Rev. Jasper Receives Appointment to Lexington School

The Rev. Louis Jasper, pastor of St. Matthew's Lutheran Church for the Deaf, New York City, has received an appointment as a teacher in training at Lexington School for the Deaf, which is affiliated with Columbia University of New York. Rev. Jasper is now taking a few courses during the spring semester and will devote much of his time to classroom work beginning in September of this year. He will be working toward his master's degree in special education, which he hopes to receive at the end of his year's training.

Pastor Jasper's work at Lexington

will be financed by the Board of Missions to the Deaf, since the board is interested in giving our missionaries more technical training in deaf education. The board is convinced that such trained men will be able to contribute much to the improvement and expansion of our mission program. Rev. Jasper is the first of other men who will receive such training.

Since Rev. Jasper will be free from school work on evenings and weekends, he will still continue as pastor of St. Matthew's Church, although Pastor Anderson will take over some of the responsibility for that year.

Parish Worker Hired in St. Paul, Minn.

Since the death of Rev. Salvner took away much help from Rev. Hauptman, the board, along with Prince of Peace Congregation in St. Paul, has hired Mrs. Florence Finke, a mother of two deaf boys, as parish worker in St. Paul. Her responsibilities will be to supervise the Sunday school for deaf children at Prince of Peace, assist Pastor Hauptman in released-time instruction at Minneapolis, St. Paul, and Faribault schools, provide some secretarial help for Pastor Hauptman in the church office, assist in calling on prospects, especially among young people, and assist in the youth program in the Twin Cities and Faribault.

We welcome Mrs. Finke to our staff and ask God's richest blessings upon her in her efforts to reach the children and the youth with the saving Gospel of Jesus Christ. Mrs. Finke has been assisting Pastor Hauptman part time for almost one

year, but her full-time activity began as of the first of March of this year.

Tracts for the Deaf Now Available

Rev. Earl Thaler, our missionary to the Deaf in New England, working together with Concordia Tract Mission, has prepared two tracts to be used in spreading the Gospel

among the Deaf. The tracts are entitled "What the Deaf Need" and "Good News for the Deaf." These tracts are available from Concordia Tract Mission, Box 201, St. Louis 66, Mo. If you wish to have a supply of these tracts to use among the Deaf of your area, write directly to the Tract Mission, and they will supply you with them at a very low cost. REV. W. F. REINKING

God's Blessings on Our Mission

Deaf Mission Statistics, 1958—1960

	1958	1959	1960
Baptized Members	10,686	9,895	9,840
Communicant Members	4,747	4,844	4,797
Children Baptized	152	152	220
Adults Baptized	69	65	56
Children Confirmed	105	129	68
Adults Confirmed	143	95	136
Total Adults Won	143	95	159
Total Communed	22,942	23,569	23,541
Marriages	52	59	66
Burials	85	93	98
Children in Classes	3,638	3,192	2,541
Number of Church Services	4,991	5,095	5,073
Total Attendance	150,092	141,180	156,511
Contributions for Home Purposes ..	\$103,089	\$107,407	\$116,387
Contributions for Missions	\$ 19,900	\$ 20,949	\$ 21,098

Let's talk a little bit about these figures. There is a reason why we have fewer baptized members in 1960 than in 1958. In 1958 some of those listed as baptized members were only children who came to hear the missionary speak at a chapel assembly once in a while. The 1960 figures are much more correct for baptized members. The same is true of the 1960 figure for communicant members. In 1959 some communicant members were listed twice in the statistics, and so the true picture of how many mem-

bers we have was not given. Also there are some members who are no longer listed as members of the Lutheran Church, since for years they have not attended a single service or come to receive the Lord's Supper. It is sad that congregations then must no longer list these people as members when they have refused to listen to the encouragement of the pastor and fellow members to come back to their Lord.

See how the Lord is blessing our work. During these last three years

302 children have been confirmed, and 397 adults have been won for Christ. This makes a total of 699 souls which have been added to the kingdom of Christ through the working of our Mission to the Deaf. All thanks and praise be to God for using our mission to bring His salvation through faith in Jesus Christ to these many souls. During these same three years a total of 276 persons have left this earth to live eternally with their Savior in heaven.

From the figures it would seem that the number of children in classes is becoming smaller each year. Here again is the matter of getting more correct figures. Many of the children listed in 1958 and 1959 were not in actual Lutheran classes but attended Lutheran chapel and assembly programs regularly. The figure of 2,541 in 1960 is now the actual number of children in Lutheran classes at the various schools for the Deaf throughout the country.

The figures for total attendance at our services show how our people are coming more eagerly and regularly to hear the Word of God. They have also shown fruits of their faith now in their increase for contributions, both to take care of their needs at their home church and to help support missions. During the three years the total contributions for home purposes came to \$326,883, and the total contributions for missions came to \$61,947, or a combined total of \$388,830. But this amount, as great as it is, is not enough to take care of the total expense of the Deaf Missions program. What has The Lutheran Church — Missouri Synod given to carry on this program? For the years of 1958

through 1960 our Synod spent for Deaf Missions a total of \$979,108. When you add what Synod has spent and what the congregations spent to take care of their needs at home, it comes to a total cost of \$1,305,991 for a three-year operation of our Mission to the Deaf. Our Synod has paid for 75 per cent of the program; our deaf congregations have paid for 25 per cent. The cost of our mission program continues to increase as the mission expands and inflation continues to creep into the economy of our country. It is so important that all of our congregations and individual deaf members take another look at what they have done to share their God-given treasures with the Lord. Let's see if our congregations and members cannot take over more responsibility for the Deaf Missions program. Let's work toward our Deaf taking over 35 per cent of the total cost of our mission program for the years of 1961 through 1963.

See you again next month.

REV. W. F. REINKING

CONFERENCES AND CONVENTIONS

Northwest Deaf Laymen's Conference: June 29 to July 2, Mission, British Columbia.

Atlantic Regional Retreat: June 9—11, Ocean City, N. J.

Great Lakes Regional Conference: June 2—4, Angola, N. Y.

*Draw us to Thee, For then shall we Walk in Thy steps forever
And hasten on Where Thou art gone To be with Thee, dear Savior.
Lutheran Hymnal No. 215*



Officers of Emmanuel Lutheran Church

Milwaukee, Wis. Officers of Emmanuel Lutheran Church for the Deaf, Milwaukee, Wis., for 1961 are Albert Arneson, chairman; Harvey Boldt, vice-chairman; Robert Schneider, secretary; Donald Baumann, treasurer; Warren Riege, envelope secretary; Raymond Krause, Donald Peterson, and Raymond Lager, trustees.

Officers of the ladies' aid are Ramona Arneson, president; Andrine Goetsch, vice-president; Dorothy Faber, secretary; Virginia Baumann, treasurer; Marcella Schneider, sick visitor; Dorothy Boldt and Grace Lager, custodians.

Bus Transportation for Parochial Students

Washington, D. C. The United States Supreme Court has upheld the constitutionality of public school transportation for parochial school students. It did so by declining to hear an appeal from a group of taxpayers in Connecticut. Justices Felix Frankfurter and William O. Douglas were the only members of the high tribunal who held that the case should have been heard.

Religious News Service commented: "Court observers believe that the seven-to-two decision dismissing the Connecticut case settles the issue and that insofar as the Federal Constitution is concerned states may grant school bus transportation to pupils attending religious schools. They pointed out, however, that the ruling will not affect state constitutions which, in some areas, have been interpreted to prohibit such transportation or other auxiliary benefits to parochial students."

David Kieffer Resumes Interpreting on Pittsburgh TV

Pittsburgh, Pa. David Kieffer, son of Mr. and Mrs. Louis Kieffer, members of Trinity Lutheran Church of the Deaf in Pittsburgh, appeared as interpreter of Col. J. J. Sustar's program on WQED-TV, Pittsburgh, for the first time since undergoing surgery last year. He taped two shows with Col. Sustar while Pastor Wagenknecht was out of town.

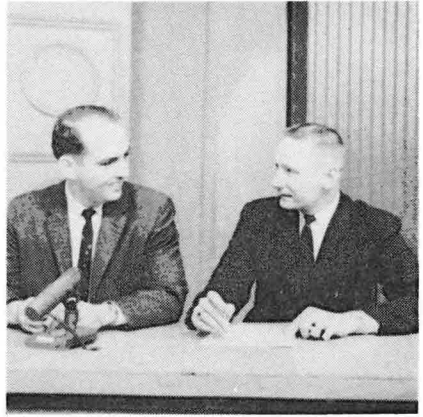
Prior to his surgery David Kieffer had appeared regularly for two years as sign language interpreter for foreign news analyst Col. Sustar.

Court Bars Chapel Construction

Milwaukee, Wis. The Circuit Court of Milwaukee County has ruled that Emmanuel Lutheran Church for the Deaf may not erect a chapel on a lot donated to the congregation. Emmanuel is continuing negotiation to purchase a chapel of another Lutheran group which is planning to relocate.

Television Appearance in St. Louis

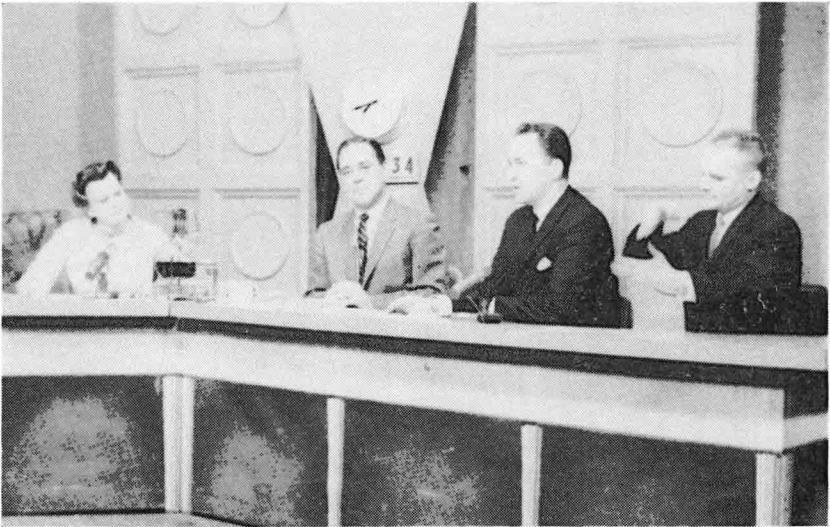
St. Louis, Mo. Pastors George Kraus and William F. Reinking recently appeared on "Good Morning, St. Louis," a popular day time television program on KMOX-TV in St. Louis. Pastors Kraus and Reinking interpreted the news, weather, and feature items, as well as the coffee commercial, in sign language. The program announcer, Tom Brooks, interviewed the Lutheran ministers on the work which the Lutheran Church is doing among the Deaf.



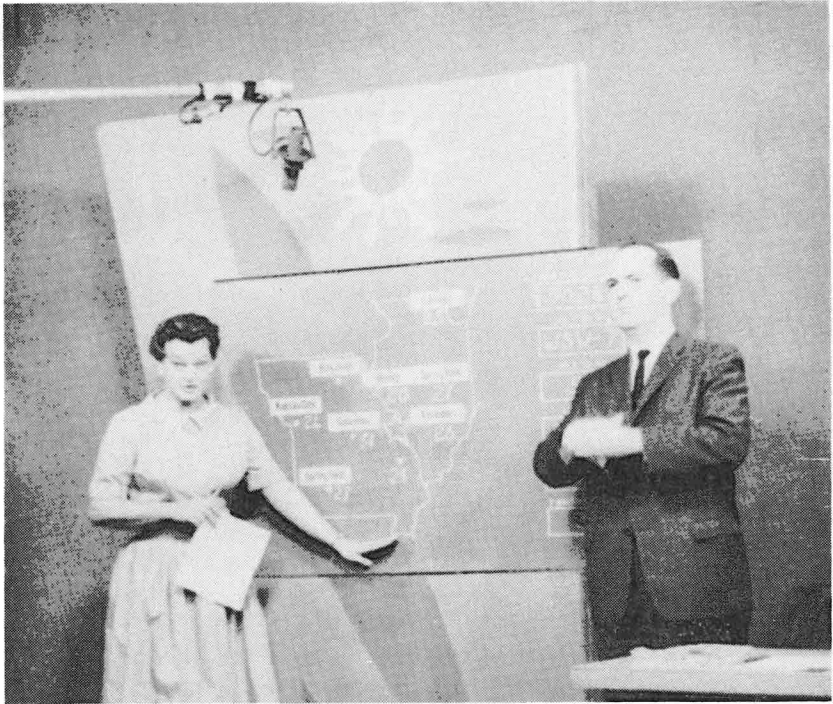
Pastor William Reinking (left) and program director Hugh Wolfey go over the schedule a few minutes before the program goes on the air

"Good Morning, St. Louis" is an hour-long program, scheduled for 7:30 to 8:30 A.M. every weekday morning. KMOX-TV expressed an interest in having the two pastors appear again at a later date for a repeat performance.

Pastor Kraus reports that he and Pastor Reinking have no idea how much coffee they sold. Could it be



The newscast in full swing, l. to r.: Dottie Bennett, weather forecaster; Tom Brooks, program announcer; Roger Grimsby, newscaster; and Pastor George Kraus, interpreter



Dottie Bennett presents the local weather forecast while Pastor Reinking interprets in sign language

that this is the first time a commercial was interpreted on television?

Twins Baptized

Milwaukee, Wis. For the first time in the 63-year history of Emmanuel Congregation twins were baptized on Feb. 5. They are Barry Lee and Laurie Anne, son and daughter of Mr. and Mrs. John Dye, members of Emmanuel Congregation.

Contribution Thermometer

Milwaukee, Wis. A "Contribution Thermometer," the work of Roscoe West, tells the members of Emmanuel Congregation at a glance whether receipts are keeping up

with current expenses and mission contributions. So far during 1961 receipts of \$600 a month are keeping pace with the budget needs for \$7,200 for the year. For the first quarter of 1961 nearly \$500 have been remitted for Synod's budget and various Lutheran charities. The pledge for missions and charities for 1961 totals \$1,500.

Northwest Deaf Laymen's Conference

Seattle, Wash. The 12th annual Northwest deaf laymen's conference is scheduled to take place from June 29 to July 2 at Camp Luther on Lake Hatzig near Mission, British Columbia.

Chancel Renovated

St. Louis, Mo. Holy Cross Lutheran Church for the Deaf, Saint Louis, has improved its chancel by means of some alterations. A free-standing altar permits the local pastor, Rev. George Kraus, to face the congregation while reading from the service book.

Walter Maack of Holy Cross Congregation made a beautiful eight-foot wooden cross to replace a small cross which had previously been attached to the dorsal curtain.

Volunteer labor made possible the painting and decorating of the entire interior of the church.



Walter Viets, one of the regular lay leaders of Holy Cross, leads the congregation in the responses for the Order of Holy Communion

Extend Sympathy

Washington, D. C. The newsletter of the Southern California field reports that Dr. George W. Gaertner's mother departed this life last February. The editor of the DEAF LUTHERAN, on behalf of its readers and on behalf of the Board for Missions to the Deaf, extends to Dr. Gaertner our genuine sympathy.

Camp for Deaf Children in New Jersey

Newark, N. J. The summer camp for deaf children sponsored by the Protestant Guild for the Deaf will be held Aug. 5 to 9 for \$65 at the Dennis Memorial Camps, Stillwater, N. J. For information write Rev. C. Roland Gerhold, 510 Parker St., Newark, N. J.

Religious Publications Face Postal Increases

Religious News Service. Postmaster General J. Edward Day is considering recommending a postal rate increase that probably will include a boost from 16 to 60 per cent for periodicals and other printed matter of nonprofit organizations.

He has not decided how much increase to ask, but an "intensive study" of the present rate structure is in progress, and it is believed he will request Congress for several hundred million dollars in additional revenue. President Kennedy also has indicated an increase will be asked.

Republicans are already on record for five-cent postage on ordinary letters, and if the new administration supports the increase, it likely will be approved.

Third class rate would then be increased from three cents to four cents, and the bulk mailing rate (200 or more pieces, tied up by destinations) would go to three cents. The rate for nonprofit organizations is presently set at 50 per cent of the regular rate. This would mean that their present rate of 1¼ cents would advance to 1½ cents.

Meanwhile general increases in second-class rates for newspapers and magazines are expected.

Atlantic Regional Retreat

Newark, N. J. The Lutheran deaf retreat for the Atlantic Region is scheduled for the second weekend in June, June 9—11, at Flanders Hotel, Ocean City, N. J.

Ephphatha Conference

St. Louis, Mo. The annual national conference of Lutheran ministers to the Deaf will be held July 18 to 21 at Concordia Teachers College, Seward, Nebr.

Missouri Synod TV Program Wins Freedoms Award

Valley Forge, Pa. "This Is the Life," half-hour television program produced by The Lutheran Church — Missouri Synod, was awarded the George Washington Honor Medal on Feb. 22 by the Freedoms Foundation. Dr. Oliver C. Harms, First Vice-President of the 2,500,000-member church body, accepted the award, the highest in its class.

This marks the sixth year that the Missouri Synod's television series has won an award and the second time it has gained top recognition. The program, now in its ninth season, is telecast over more than 300 stations.

The episode on which the award was based was entitled "The Trap of Freedom." It dealt with parental responsibility for Christian nurture and training of the nation's children.

Lutherans in Teacher Training

St. Louis, Mo. Two Lutherans are enrolled in the teacher training program at Central Institute for the Deaf, St. Louis, Mo. Miss Judy McCall of Oklahoma City, Okla., and Miss Elaine Walter of Tom-

ball, Tex., are in their first year of a two-year course of study.

Judy and Elaine became acquainted with Pastor George Kraus, Lutheran minister to the Deaf in St. Louis, at Central Institute, where Pastor Kraus is also taking courses on a part-time basis. They have demonstrated great interest in performing some services for the church as they take up their work as teachers, reports Pastor Kraus. They would like to help establish schools for the Deaf in underdeveloped countries of the world.

Once each month Judy and Elaine meet at the home of Pastor Kraus with sign language students from Concordia Seminary for a social evening and discussion session. Pastor Kraus also reports that Judy and Elaine are learning the sign language fast.



Miss Judy McCall and Miss Elaine Walter

St. Matthew's in New York Plans Alterations

New York, N. Y. St. Matthew's Lutheran Church for the Deaf, Jackson Heights, N. Y., has announced plans for the remodeling of the rear of the church to provide a new classroom 9'×22' and a new office 9'×12'. To make room for the

two rooms the last five pews in the nave will be removed, and the partition dividing the nave and the narthex will be moved forward. A coatroom will also be installed near the main entrance.

A new and larger dossal curtain has been placed behind the altar at St. Matthew's, and the altar has been moved out from the wall to make it a free-standing altar in the chancel.

Dixie Deaf Lutheran Conference

Nashville, Tenn. The annual Dixie Deaf Lutheran Conference is being held in Nashville, Tenn., on April 29 and 30. Mr. Uriel Jones of Knoxville, Tenn., is program chairman.

Great Lakes Circuit Meeting

Delavan, Wis. The Great Lakes Circuit of the Central Region is considering holding a meeting on April 30 at Delavan to plan the circuit's regional conference for 1961. Four fields comprise the Great Lakes Circuit: Chicago, Delavan, Madison, and Milwaukee.

The second circuit of the Central Region is the Mississippi Valley Circuit, consisting of Indianapolis, Jacksonville, and St. Louis fields.

Rev. George Kraus of St. Louis is Regional Counselor for the Central Region.

Old Issues of Deaf Lutheran Wanted for History

Portland, Oreg. Mrs. Narcissa Eden, historian, requests old issues of the DEAF LUTHERAN, especially 1910 to 1920, for her preparation of a history of Lutheran mission activity among the Deaf in the Pacific Northwest.

Readers are encouraged to send such copies of the DEAF LUTHERAN or other information on Lutheran church work among the Deaf in the N. W. Eighth Ave., Portland 12, Oreg.

Dedication of Stained-Glass Windows for Gloria Dei Chapel

Detroit, Mich. On Sunday, April 23, the 15 stained-glass windows in the Gloria Dei Clara Elizabeth Knudsen Chapel at the Lutheran School for the Deaf in Detroit were dedicated to the glory of God and the religious education of deaf children.

Rev. Paul Maier preached the sermon for the dedication service. Pastor Maier's father, the sainted Dr. Walter A. Maier, was the speaker for the dedication of Gloria Dei Chapel 20 years ago.

Religion Workbook Praised

New York, N. Y. Mill Neck Lutheran School for the Deaf on Long Island reports "overwhelmingly favorable" response to Book One of the "John of Beverly Series" of religious workbooks for deaf children. Educators in private and public deaf schools throughout the United States where the books are being tested have endorsed the workbook as a major contribution in the area of teaching religion to the deaf child.

Two reprintings, more than 10,000 copies, have been distributed for evaluation and classroom use. No more reprints will be made until the present text has been thoroughly examined from educational, religious, and psychological points of view.

Book Two in the John of Beverly Series is now in the stages of prepa-

ration. Melvin Luebke has announced in the *Mill Neck Manor Bulletin* that if Book Two is as favorably received as Book One, the Lutheran Friends of the Deaf will be encouraged to extend the series to an eventual total of six. Funds for additional workbooks in the series, however, are not available at this time to plan too far into the future. The completion of the project may depend on an increase in income from gifts to Mill Neck School.

May 1 has been set as the deadline for evaluations on Book One. Shortly after May 1 an advisory committee composed of Lutheran ministers to the Deaf and the headmaster and faculty members of Mill Neck School will make such changes as are warranted. The revised edition should be ready for official distribution by Sept. 1.

New Sign Language Pupil

St. Louis, Mo. Rev. Philip Ernst, pastor of St. Paul's Lutheran Church, Fulton, Mo., is a newly enrolled sign language pupil of Pastor George Kraus, missionary to the Deaf of St. Louis. Pastor Ernst assists Pastor Kraus with work at the Missouri School for the Deaf in Fulton. Before accepting the call to St. Paul's Church in Fulton, Pastor Ernst was a missionary of the Lutheran Church in Nigeria, West Africa.

Pastor Ernst has been working hard at learning signs and has taken over one of the confirmation classes at the Fulton school. During a winter snowstorm Pastor Ernst substituted for Pastor Kraus at a worship service for the Deaf in Mexico, Mo.



Rev. Philip Ernst

Baptisms: Iowa Field

Des Moines, Iowa. Ronald James, the son of Mr. and Mrs. Robert Clark of Osage, Iowa, was baptized at Mason City on Nov. 27.

Pamela Ann, the daughter of Mr. and Mrs. Elmo Phillips of Fort Dodge, Iowa, was baptized at Faith Lutheran Church, Fort Dodge, on Dec. 11.

Sally Mae, the daughter of Mr. and Mrs. William Kautzky of Des Moines, Iowa, was baptized at Calvary Lutheran Church on Dec. 18.

Married

Los Angeles, Calif. Two couples were married during the month of February in the Southern California field: Miss Cynthia Winney and Barney Patton were united in marriage on Feb. 4, Rev. Gerhard Gehrs officiating. Miss Theodora Satterfield and Cleo P. Patton, Jr., were wed on Feb. 12, with Rev. A. T. Jonas officiating.



Devotions

“Light for Your Way”

Daily Bible Readings for May

May 1 — 1 Tim. 5:17-25	May 17 — Jonah 4:1-11
May 2 — 1 Tim. 6:1-10	May 18 — Joel 1:1-13
May 3 — 1 Tim. 6:11-21	May 19 — Joel 1:14-20
May 4 — 2 Tim. 1:1-14	May 20 — Joel 2:1-17
May 5 — 2 Tim. 2:1-13	May 21 — Joel 2:18-32
May 6 — 2 Tim. 2:14-26	May 22 — Joel 3:1-8
May 7 — 2 Tim. 3:1-17	May 23 — Joel 3:9-21
May 8 — 2 Tim. 4:1-22	May 24 — James 1:1-18
May 9 — Zeph. 1:1-18	May 25 — James 1:19-27
May 10 — Zeph. 2:1-15	May 26 — James 2:1-13
May 11 — Zeph. 3:1-10	May 27 — James 2:14-26
May 12 — Zeph. 3:11-20	May 28 — James 3:1-12
May 13 — Jonah 1:1-10	May 29 — James 3:13-28
May 14 — Jonah 1:11-17	May 30 — James 4:1-12
May 15 — Jonah 2:1-10	May 31 — James 4:13-5:6
May 16 — Jonah 3:1-10	


ORDER FORM

THE DEAF LUTHERAN

210 N. Brocc^h St. Louis 2, Mo.

Subscription price: \$1 per Year

Amount enclosed \$ _____ New Renewal

If Renewal, please send address label. 

Please print name and address. Thank you.

Name _____

Street or Route _____

City _____ Zone _____

State _____