

# The Deaf Lutheran



*Ephphatha, that is,  
Be opened.*

MARK 7:34

---

Volume 55

AUGUST 1963

Number 8

---



*"I am the Way"*

## Board for Missions to the Deaf of The Lutheran Church—Missouri Synod

Rev. Ernest R. Drews, Chairman, 1680 W. Minnehaha St., St. Paul 4, Minn. Midway 6-1682  
 Rev. Erwin E. Schroeder, Secretary, 5337 15th Ave., S., Minneapolis 17, Minn. TAYlor 3-2769  
 Rev. Elmer W. Koberg, 1365 1st Ave., S. W., Cedar Rapids, Iowa. EMpire 2-8359  
 Mr. C. J. Jacobson, Financial Secretary, 1221 Blair Ave., St. Paul 4, Minn. MIDway 5-4762  
 Mr. E. N. Mitchell, Ph. D., 420 Ridgefield Rd., Chapel Hill, N. C.  
 Rev. Wm. F. Reinking, Exec. Secretary, 210 N. Broadway, St. Louis 2, Mo. Central 1-6969

### Lutheran Ministers to the Deaf

Rev. Orlin S. Anderson 104 Finley St., Jacksonville, Ill.	243-2528	Rev. Harry W. Hoemann 1728 Varnum St. N. W. Washington 11, D. C.	RAndolph 3-0535
Rev. Clark R. Bailey 3821 Forest Ave., Des Moines, Iowa	CRestwood 9-0818	Rev. Louis Jasper 53-13 244th St., Douglaston 62, N. Y.	BAyside 9-7024
Rev. Robert A. Bauer 5808 113 B St., Edmonton, Alta., Can.	GEneva 3-7408	Rev. A. T. Jonas 927 Gramercy Pl., Los Angeles 19, Calif.	REpublic 5-8630
Vicar James Bengelsdorf Douglas and Luther Lane, Dallas, Tex.		Rev. Martin Kosche 116 Walnut St., Delavan, Wis.	SAratoga 8-3730
Rev. John A. Beyer 1101 15th Ave., Seattle 22, Wash.	EAsT 4-2200	Rev. W. H. Lange 1230 Elizabeth, Denver 6, Colo.	388-1548
Rev. N. E. Borchardt 11719 Evanston Ave., Detroit 13, Mich.	LAkeview 7-7023	Rev. Donald Leber 889 N. Willett Ave., Memphis 7, Tenn.	
Rev. Wayne C. Bottlinger 4609 Watling St., South Burnaby, B. C. (Vancouver) Can.	433-4255	Vicar Roger Leonhardt College and McKenzie, Winnipeg, Man., Can.	
Rev. Walter Busby 1369 East Ave., Rochester, N. Y.	CHapel 4-0131	Rev. Wm. Ludwig 153 East Lane Ave., Columbus 1, Ohio	268-1692
Rev. Robert M. Corl, Jr. 1929 Huxley Street, Madison 4, Wis.	CH 9-8076	Rev. E. Mappes 2811 N. 66th Ave., Omaha 4, Nebr.	551-1529
Rev. Theo. DeLaney 2034 32nd Ave., San Francisco 16, Calif.	LOmbard 4-6793	Rev. Leroy W. Mason 8448 S. Indiana St., Chicago 19, Ill.	Vincennes 6-2069
Rev. A. E. Ferber 3807 Gilham Rd., Kansas City 11, Mo.	LOgan 1-3849	Rev. Martin E. A. Mueller 2571 N. Grant Blvd., Milwaukee 10, Wis.	Hilltop 5-7230
Rev. W. Ferber 617 14th St., S., Fargo, N. Dak.	ADams 5-5661	Rev. Ervin Oermann 1624 29th St. North, Birmingham 4, Ala.	ALpine 1-8524
Vicar Harold Fleischauer 110 Grafton Ave., Apt. 9, Newark, N. J.		Rev. Daniel H. Pokorny 3421 North Park Ave., Indianapolis, Ind.	WAlnut 3-1818 WAlnut 3-7437
Rev. G. W. Gaertner, Ph. D. 3233 62nd Ave., Oakland 5, Calif.	LOckhaven 9-3881	Rev. Floyd Posschl 6301 Alamo, St. Louis 5, Mo.	PARKview 7-1752
Rev. G. A. Gehrs, Jr. 6262 Soledad, Riverside, Calif.	OVERland 9-6571	Rev. Geo. C. Ring 101 S. Mable, Sioux Falls, S. Dak.	
Rev. C. Roland Gerhold 510 Parker St., Newark 4, N. J.	HUMBoldt 5-2260	Rev. Herbert W. Rohe 1066 Chamboard Dr., Houston 18, Tex.	OVERland 2-3196
Rev. Herman Graef 5070 Lake St., Omaha 4, Nebr.	556-5732	Rev. Rodney Rynearson 3614 W. Wellesley, Spokane 15, Wash.	FAirfax 8-9673
Rev. Francis G. Gyle 1375 N. E. 137 St., North Miami 61, Fla.	MU 8-0312 Res. 759-4013	Rev. E. Scheibert 1400 N. Ridgeway Ave., Chicago 51, Ill.	BElmont 5-7480
Rev. A. L. Hauptman 205 N. Otis, St. Paul, Minn.	PA 1-3239	Rev. Earl J. Thaler 32 Brunswick Ave., W. Hartford 7, Conn.	523-8386
Rev. Martin Hewitt 1221 Virginia Ave., Cleveland 7, Ohio		Rev. Frank Wagenknecht 1335 Commercial St., Pittsburgh 18, Pa.	FRemont 1-7064
Vicar Don D. Haug 245-84 63rd Ave., Flushing 62, N. Y.	HA 8-5960	Rev. W. A. Westermann 323 McIver St., Greensboro, N. C.	BRoadway 4-7251

These ministers preach in more than 230 cities in our land; they conduct classes in religion at over 70 city and state schools for the Deaf. You will find them ready to serve you; call upon them or write to them. The Deaf need God's Word.

### THE DEAF LUTHERAN

Official Paper of the Board for Missions to the Deaf  
 The Lutheran Church—Missouri Synod

Published monthly by Concordia Publishing House, St. Louis 18, Mo. Subscription price, \$1.00 per year. Second-class postage paid at St. Louis, Mo.

The DEAF LUTHERAN goes to press on the 3rd Friday, two weeks before issue. Send all news, pictures, stories, and articles to Rev. Harry W. Hoemann, B. D., Editor, 1728 Varnum St. N. W., Washington 11, D. C.

Send subscriptions, address changes, and cancellations to THE DEAF LUTHERAN, 210 N. Broadway, St. Louis 2, Mo.

For promotional materials write Rev. Earl Thaler, Promotion Manager, 32 Brunswick Ave., West Hartford 7, Conn.

# Notes from the Executive Secretary

## **Rev. George C. Ring Accepts Call to Sioux Falls, S. Dak.**

Rev. Geo. Ring, pastor of Hope Lutheran Church for the Deaf in Portland, Oreg., and Salem Lutheran Church for the Deaf, Salem, Oreg., has accepted a call to become pastor of Trinity Lutheran Church for the Deaf in Sioux Falls, S. Dak., and missionary to the Deaf in the South Dakota field. Pastor Ring has served the Deaf in the Oregon field faithfully since 1949 and has been greatly blessed in his work there. His farewell service in Oregon was held on Saturday, June 22, and Rev. Ring will be installed in Sioux Falls the latter part of July. We pray God to bless the work of Pastor Ring in his new field and soon to send a new pastor to the Deaf in Oregon.

## **Rev. George Kraus Declines Call to Hong Kong**

Rev. George Kraus, pastor of St. Peter's Lutheran Church, Brooklyn, N. Y., has declined the call extended to him by the Board for World Missions to serve as counselor to the Deaf in the Far East area. Another call will be extended shortly by the Board for World Missions.

## **Land Purchased in Columbus**

The Board for Missions to the Deaf has authorized the purchase of a chapel site on Morse Road in Columbus, Ohio. This site will be approximately two blocks west of the Ohio State School for the Deaf. It is hoped that a chapel can be built within a few years.

## **Indianapolis Deaf to Have Chapel**

A service station is being purchased in Indianapolis at the corner

of 42nd and College Ave. to be remodeled into a chapel for Peace Lutheran Church for the Deaf. This chapel will be only a few blocks from the Indianapolis School for the Deaf. It is hoped that the chapel will be ready for dedication by September. When complete, the chapel will include a large multipurpose room to seat 65—70 persons, plus an office for the pastor. This chapel will replace the former chapel on College Ave., which was sold in 1957. Since that time Peace Congregation has met in the parish house of Our Redeemer Lutheran Church. Watch this paper for more information on development of this chapel.

## **A Trip to Texas and New York**

Ordinarily my visits away from St. Louis are to mission fields in one certain part of the country. However, during the first week of June I visited both in Texas and in New York City. The place was Camp Lone Star near La Grange, Tex. There was a fine turnout of Deaf, with representatives from Dallas, Austin, San Antonio, Houston, and Giddings. Pastor Herbert Rohe and his vicar, Larry Harris, together with several of the Deaf, presented a very fine program with the theme "Growing in Christ." All of us who attended the retreat grew spiritually during the weekend that we spent together. It would seem that this is the first of many such retreats to be held for the Deaf in Texas.

On Monday, June 3, Pastor Rohe and I took off from Houston for a jet flight to New York City. However, there was heavy fog at Idlewild Airport in New York City and

so our big plane had to land at Philadelphia. We spent more time traveling from Philadelphia to New York by bus than we had from Houston to Philadelphia by plane. We are thankful again that the Lord provided us with a safe trip. The purpose of the trip to New York was to meet with the Literature Committee of our mission and representatives of Mill Neck Manor Lutheran School for the Deaf to review two more books of the John of Beverly series, religious workbooks for deaf children. The meeting was held at Mill Neck, and it is always a real pleasure to visit this fine school.

This Literature Committee, which consists of Rev. Gerhold, chairman, Rev. Oermann, and Rev. Graef has been very helpful in advising Mill Neck in the development of the books of this John of Beverly series. It is hoped that these two books will be available for use on a pilot test program by the fall of this year. There is no doubt that these books have been a great help in leading deaf children to know and love the Lord Jesus as their Savior.

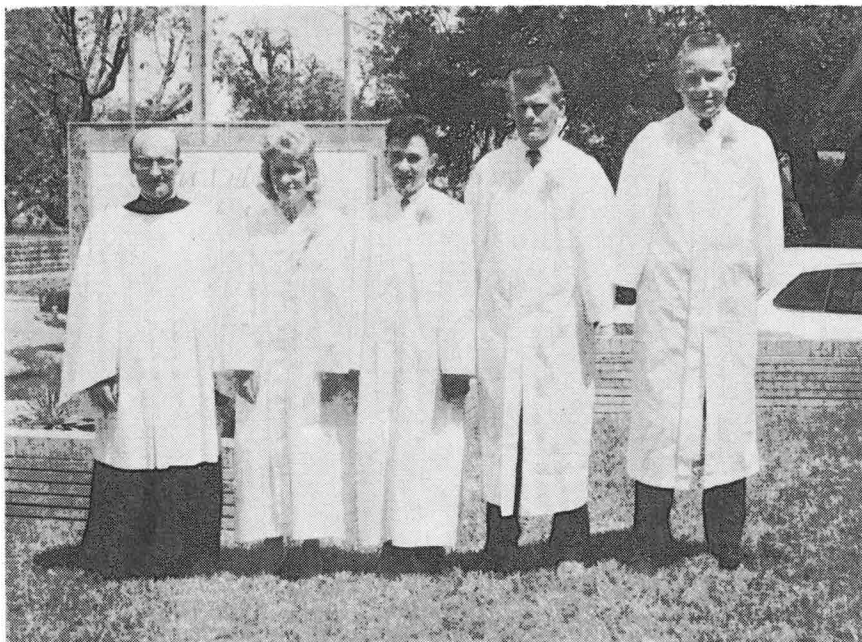
God be with you all. See you next month.

REV. W. F. REINKING  
St. Louis, Mo.

*"Blessed are the dead which die in the Lord from henceforth." Revelation 14:13*

**We mourn the passing of veteran missionary to the Deaf and former Editor of *The Deaf Lutheran*, Rev. Nathaniel Paul Uhlig, who departed this life on Thursday, June 27, in Jacksonville, Ill. Rev. Elmer Koberg, pastor of Trinity Lutheran Church, Cedar Rapids, Iowa, where Pastor Uhlig served for many years, represented the Board for Missions to the Deaf and the Ephphatha Conference at the funeral. The funeral was conducted on Monday, July 1, at Salem Lutheran Church in Jacksonville. Additional information will be printed in a future issue of this magazine.**

## The Texas Field



**Pastor H. Rohe, Virginia Kochlin, Thomas Tabor, James Bronson, and Melvin Rueffer, confirmed in Austin April 7**

*Houston, Tex.* Fourteen catechumens were confirmed in Houston, Austin, Amarillo, San Antonio, and Dallas between April 15, 1962, and April 21, 1963. Those confirmed were Claude Griffin, Marvin House, Lynell Kunkel, Mrs. Aline Neill, Christian Neill, Ira G. Thompson, Virginia Kochlin, Melvin Rueffer, Thomas Tabor, James Bronson, Edgar Gates, Mrs. Edgar Gates, Jacob Zeiler, and Dwain Dube. Their pastor is Rev. H. Rohe of Houston.

Pastor Rohe also serves the Jesus Lutheran Church of the Deaf in Austin. Constructed in 1958, the chapel in Austin was made possible by a grant from the Texas District of the Lutheran Women's Missionary League in the amount of \$2,000 and a \$10,000 grant from The Lutheran Church — Missouri Synod.

Other individuals, societies, and churches contributed smaller amounts.

Mr. Eugene Wukash, member of the American Institute of Architects, donated his services in the



**The nave of Jesus Lutheran Chapel**

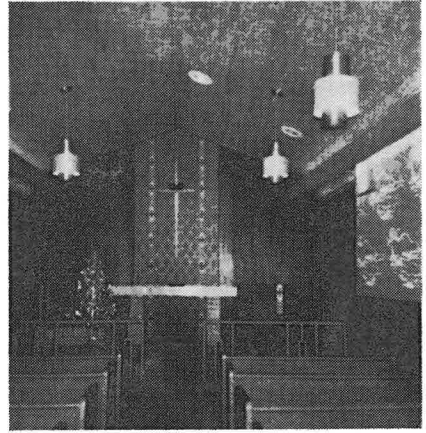


Jesus Lutheran Church exterior

design and plan of the building. The hands on the outside of the church are of marbleized concrete. The sculpture was designed at a cost of \$500 by the sculptor artist Mr. Wayne Horton Smith of Austin. A clay model was made from posed photos and is a composite of the hands of two members of the Austin congregation. The work was

completed on Nov. 1, 1958.

Assistance in teaching the Sunday school classes at the Austin congregation has been given by students from Concordia College, Austin. Randy Ledbetter, Dick Reinap, Marianne Hentsch, and Betty Grimm, all students at Concordia College, have assisted Pastor Rohe during the past year.



Chancel of Jesus Lutheran Chapel

## Why We Go To Church

### We go to church to worship

#### 1. *Worship is for God*

"It is a good thing to give thanks unto the Lord and to sing praises unto Thy name, O Most High." (Ps. 92:1)

#### 2. *Worship is for people*

"All the earth shall worship Thee and shall sing unto Thee; they shall sing to Thy name." (Ps. 66:4)

#### 3. *Worship is a joy*

"I was glad when they said unto me, 'Let us go into the house of the Lord.'" (Ps. 122:1)

#### 4. *Worship is for me*

"One thing have I desired of the Lord, that will I seek after: that I may dwell in the house of the

Lord all the days of my life, to behold the beauty of the Lord and to acquire in His temple." (Ps. 27:4)

**Worship has two parts:** What we say to God and what God says to us

#### 1. *What we say to God* (sacrificial)

We pray for forgiveness.  
We praise God for His great glory.  
We ask for mercy.  
We present our offerings.  
We thank God for His blessings.

#### 2. *What God says to us* (sacramental)

God reminds us that we are sinners.  
God forgives our sins.

God encourages us to live according to His will.

God tells us He loves us for the sake of Jesus, our Savior.

God blesses us.

### Quiz:

1. The part of the worship service in which we speak to God is called \_\_\_\_\_.
2. The part of the worship service in which God speaks to us is called \_\_\_\_\_.
3. Psalm 92:1 calls worship a \_\_\_\_\_.
4. Psalm 66:4 says that \_\_\_\_\_ will worship God and sing to His name.
5. Psalm 122:1 was written by someone who was \_\_\_\_\_ when someone invited him to go to the house of the Lord.
6. Psalm 27:4 was written by a man who wanted to live all his life in the \_\_\_\_\_.
7. Mark the following either sacrificial or sacramental:

- a. "I, a poor miserable sinner, confess unto Thee all my sins and iniquities." \_\_\_\_\_
- b. "I forgave you all your sins in the name of the Father and of the Son and of the Holy Ghost." \_\_\_\_\_
- c. "Glory be to God on high." \_\_\_\_\_
- d. "Lord, have mercy upon us." \_\_\_\_\_
- e. "The Holy Gospel is written in John, chapter 3, verse 16: 'God so loved the world that He gave His only-begotten Son.'" \_\_\_\_\_
- f. "Take, eat; this is the true body of our Lord Jesus Christ, given into death for your sins." \_\_\_\_\_
- g. "Oh, give thanks unto the Lord, for He is good, and His mercy endureth forever." \_\_\_\_\_
- h. "The Lord bless Thee and keep thee." \_\_\_\_\_

Answers on p. 120

## Ephphatha Conference

The annual Ephphatha Conference of missionaries to the Deaf of The Lutheran Church — Missouri Synod was held June 25 to 29 at Carver Hall, Howard University, in Washington, D. C. The conference was scheduled for Washington, D. C., on those dates so that the members of Ephphatha Conference could participate in the International Congress on the Education of the Deaf, which was also scheduled in Washington, D. C., for the same approximate dates. Immediately following the conference and the International Congress, members of Ephphatha

Conference who serve the Deaf in the United States remained in Washington for a three-day workshop on deafness and rehabilitation sponsored by Gallaudet College for the Vocational Rehabilitation Administration, Department of Health, Education, and Welfare.

Conference convened at 10:00 A. M. Tuesday, June 24, with the opening worship service and the administration of the Holy Communion at Christ Lutheran Church, 16th and Gallatin, host congregation for the deaf congregation of metropolitan Washington, D. C. Pastor Harry



Hoemann, missionary to the Deaf in Washington, officiated for the opening ceremony. Rev. Erwin E. Schroeder, secretary of the Board for Missions to the Deaf, delivered the sermon. His topic was "Ambassadors for Christ," based on 2 Corinthians 5:18-20.

Additional articles on the program of Ephphatha Conference, the International Congress, and the Workshop on Deafness and Rehabilitation

will appear in future issues of the DEAF LUTHERAN.

**Answers to quiz:**

- |                         |                   |
|-------------------------|-------------------|
| 1. Sacrificial          | 7. a. Sacrificial |
| 2. Sacramental          | b. Sacramental    |
| 3. Good thing           | c. Sacrificial    |
| 4. All the earth        | d. Sacrificial    |
| 5. Glad                 | e. Sacramental    |
| 6. House of<br>the Lord | f. Sacramental    |
|                         | g. Sacrificial    |
|                         | h. Sacramental    |

## "I Am the Way"

Which is the right way to heaven? Many uninformed persons believe that there are many ways, all leading to one and the same heaven. They believe that Jesus is one of the great men in our world's history who came to show us how to live better with each other. Some even say, "I don't need the church. I know what I am doing." All these opinions need to be corrected by the clear words of Jesus, "I am the Way . . . no one comes to the Father but by Me" (John 14:6). Jesus is the *only* way to heaven. That is what the Bible teaches. Elsewhere in God's Book we read, "There is salvation in no one else, for there is no other name under heaven given among men by which we must be saved." (Acts 4:12)

There is no other way. Those who lead a good life by their own efforts have no claim on heaven. Any person who does fine things and gives generously to charities has no claim on heaven. Why not? Because no one has a *claim* on heaven. No one can earn heaven. Unless a person has the "Jesus way" to heaven, he will not find heaven.

Jesus is the Way to heaven. Those

who believe in Him will be saved. That means those who believe will be rescued from the clutches of sin, the curse of death, and the power of the devil. Those who believe will know a loving and forgiving God. They will go to heaven, the home of God.

Do you repent of your sins and accept Jesus as your personal Savior? Repentance and faith in Christ will put you on the way to heaven, the Jesus way, the one and only way to salvation.

REV. WILLIAM LUDWIG  
Columbus, Ohio

## Forgiveness

A wise man never lets his anger make him do and say things he would not do or say at other times. He also does not take revenge. He lets the Lord deal with injustices, because God has reserved the right to punish for Himself.

Christians promptly and willingly forgive those who have wronged them.

Jesus told Peter 7 times was not often enough to forgive his brother, but 70 times 7. We should be willing to forgive over and over again.



When we pray, "Forgive us our trespasses," we say, "as we forgive those who trespass against us." If we are not willing to forgive others, this is a dangerous prayer. We are

then asking God to refuse to forgive us as we refuse to forgive others.

*Lord, grant us Thy forgiveness, and give us a willingness to forgive other people. Amen.*

REV. J. A. BEYER



### **Northwest Lutheran Camp for the Deaf**

*Portland, Oreg.* The Northwest Lutheran Camp for the Deaf will be held at the Seabeck Christian Conference Grounds near Bremerton, Wash., Aug. 16—18. The motto for the camp will be "Faith Forward." Topics to be presented by the participating fields are "Faith Is Needed," Seattle field; "Forward with Bible Classes," Vancouver field; "Forward with Synod," Spokane field; "Forward with Work in the Home Church," Portland field.

### **Confirmed at Delavan**

*Delavan, Wis.* A fine group of young people was received into communicant membership with the Lutheran Church of the Deaf on Sunday, May 16. Nineteen were by confirmation and one by Baptism.

Confirmed into Holy Cross Congregation were Thomas Andersen, Racine; Jack Barr, Greenwood; Mary Ann Barton, Madison; Roger Bolf, Greenwood; Edward Brandt, Fond du Lac; David Charbonneau, Superior; Richard Connell, Madison; Charles Cooper, Milwaukee; Judy Cooper, Richland Center; Stanley Cote, Chippewa Falls; Roberta Giese,

Suring; Vaughn Hallada, Port Washington; Nancy Hubbard, Suring; Patricia Lange, Crystal Falls, Mich.; Thomas McCullough, Wisconsin Dells; David Otto, Neosho; Wallace Riege, Milwaukee; Ann and Kay Strickland, Milwaukee. Baptized into membership was Danny Hoffman, Whitewater. Three other pupils were baptized, Virginia Bethke, Wausau; Stephen Gadbow, Wauwatosa; and Richard Thomas, Milwaukee. God willing they will be confirmed at a later date.

A quartet of hearing girls of Redeemer Lutheran Church, led by Mrs. Donald Wilke, sang the hymn "Jesus Lead Us Day by Day," while four deaf children gave the sign language version.

A potluck dinner was served to approximately 100 parents and relatives of the class.

### **Twenty-Five Confirmed**

*Omaha, Nebr.* On Mother's Day, May 12, 25 pupils from the Nebraska and Iowa schools for the Deaf were received into membership with the Lutheran Church by the rite of confirmation. Six received God's grace in Holy Baptism in the service prior to their con-

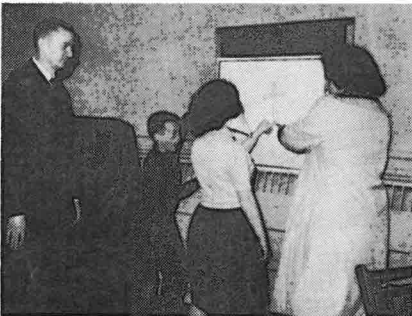
firmation. Pupils marked with an asterisk (\*) were both baptized and confirmed on May 12.

*Iowa School:* Darrell Berglund from Boone, Terry Buchholz from Waterloo, Steven Barker from Hawkeye, Dain Berggren from Armstrong, Phyllis Dalen from Carson, Mary Erpelding from Jesup, Sandra Gehring from Denison, Ricky Herbold\* from Urbandale, Ida Hesse from Clinton, Jay Oelberg from Mason City, Vicki Pate from Burlington, Sherry Peterson\* from Des Moines, Susan Schulz from Merrill, Joy Rasmussen from Dolliver, and Muriel Wirth from Marcus.

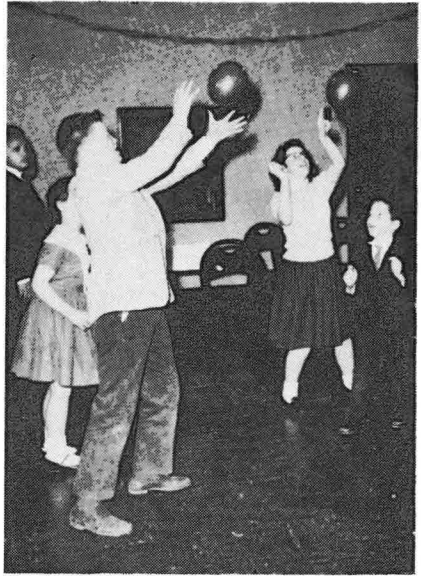
*Nebraska School:* Eugene Anderson from Grand Island, Kathleen Doering from Omaha, Alan Dreeszen from Lincoln, Joseph Morford from Omaha, Karen Schuelke from Alvo, Jean Smith from Omaha, Joyce Peters\* from Lincoln, Richard Peters\* from Aurora, Arthur Spencer\* from Ashby, and John Wilkinson\* from Ogallala.

### Easter Party

*W. Hartford, Conn.* The fifth annual Easter party for Protestant children of the American School for the Deaf was under the direction of Mrs. Daniel Balsis, with other



Nicholas Buck and Alcinda Cochran led a blindfold game of pinning a cross on Mount Calvary



Intermediate students play balloon tag

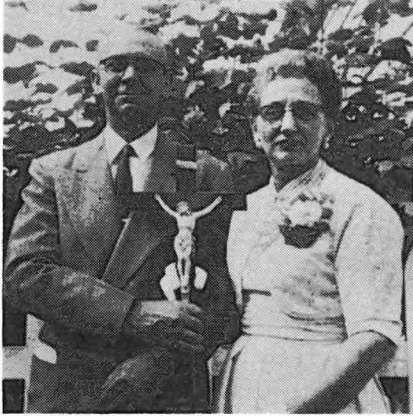
parents and friends assisting. The party began with games followed by devotions, supper, and movies. The party took place on April 7 at Bethany Lutheran Church.



Balloon-breaking relay game. One youngster needed an assist to break his balloon; Pastor Thaler came to his aid

## New Members in Portland

*Portland, Oreg.* On Pentecost Sunday, June 2, Alton and Wuanita Peterson became members of the Lutheran Church of the Deaf in Portland, Oreg. Mrs. Peterson was baptized and Mr. Peterson was confirmed into membership.



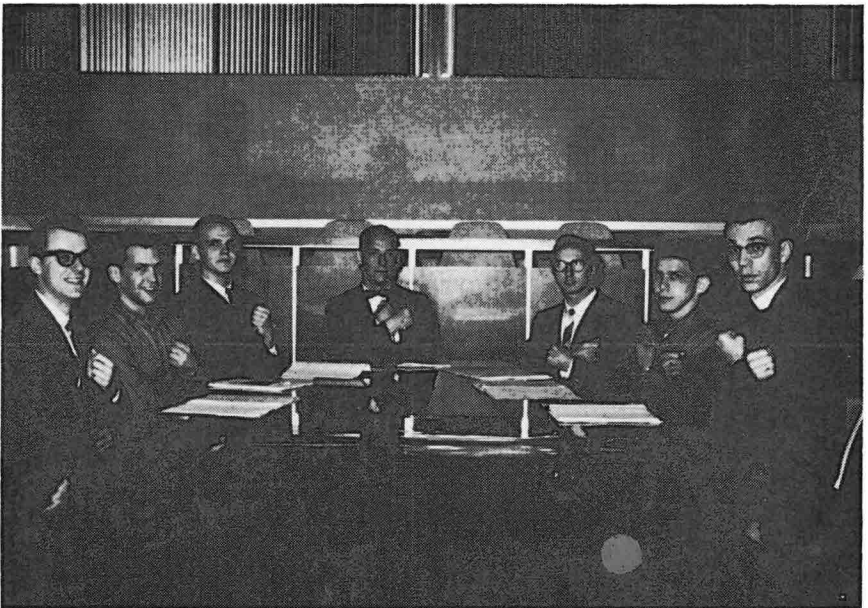
Mr. and Mrs. Alton Peterson

## Sign Language Classes in Portland

*Portland, Oreg.* During the past school year several students from Concordia College, Portland, Oreg., met with Rev. George Ring to study the language of signs. Alice Forte, Arlene Maffet, Jim Lauer, Sherry Thomason, Roger Mead, Ted Potter, Nelanda Kissinger, and Karen Wienk were the members of the class. Alice and Arlene plan to attend Valparaiso University this fall and hope to become teachers of the Deaf.

## Sign Language Class in Fort Wayne

*Fort Wayne, Ind.* Again and again our missionaries are asked the question, "Where did you learn to sign?" Perhaps you will soon be getting the answer, "I learned while I was a student at Concordia Senior College in Fort Wayne."



Rev. Daniel Pokorny, right, demonstrates the sign for "love" for the class at Concordia Senior College



L. to r.: Mrs. Norman Hyer, sister of the bride, bride and groom and Pastor Earl J. Thaler, and Richard Timko, brother of the groom

Pastor Daniel Pokorny has been teaching a group of students at the college for the past year. Two of the six students in the group have already assisted at services for the Deaf in Fort Wayne.

#### Timko and Phelon Wed

*W. Hartford, Conn.* Mr. Edward Timko of Bridgeport and Miss Beverly Phelon of West Hartford, Conn., were united in holy wedlock at the Lutheran Church of the Deaf, West Hartford, on April 20.

#### Central Region Deaf Lutheran Conference

*Indianapolis, Ind.* The Central Regional Conference for pastors and laymen will be held in Indianapolis, Ind., Sept. 14 and 15. All sessions and meetings will be held in the Sheraton Lincoln Hotel in downtown Indianapolis. The Fellowship Banquet will be Saturday evening.

#### St. Matthew's Lutheran Church Banner

*Newark, N. J.* Mr. Louis Slotnick of New Jersey has donated a banner to Saint Matthew's Lutheran Church for the Deaf in Newark. The banner illustrates the name of the congregation with the symbols



Pastor C. Roland Gerhold and Mr. Louis Slotnick with the St. Matthew's banner

across the top. Three money bags on the Greek letter "Tau" represent the tax collector Matthew. Luther's coat of arms represents the confession of St. Matthew's as a Lutheran congregation. The ear with two cross bars represents the Deaf.

Mr. Slotnick, a Hebrew, is not a member of St. Matthew's Congregation, but he attends church regularly. He has expressed a willingness to Pastor Gerhold to construct banners or flags for other Lutheran churches. Inquiries may be addressed to him in care of the church office of St. Matthew's in Newark.

### **Eastern Regional Retreat**

*Washington, D. C.* Exactly 100 persons, the maximum allowed the Eastern Region by Pocono Crest, registered for the annual Lutheran Deaf Retreat of the Eastern Region June 7—9 at Pocono Pines, Pa. The theme was "Prayer."

Opening remarks were made by Pastor Hoemann. He compared prayer, our talking with God, with the kind of conversation that small children have with their parents. "You are my daddy" illustrates the praise of the Christian as he says, "Thou art my God." "Thank you, Daddy," illustrates the thanksgiving of the Christian as he remembers to put his gratitude to God into words. "Please may I have . . ." begins the request of many a child to his parent. Similarly the Christian asks God for the things he wants or needs, always adding "Thy will be done." Finally, occasions will arise when the child must hang his head and say, "I'm sorry, Daddy." So also the Christian must remember his sins and transgressions and confess his guilt and reveal his genuine sorrow to God. Praise, thanksgiving, petition, and confession — all part of

the daily give and take between a child and his parent, should also be part of the prayer life of every Christian.

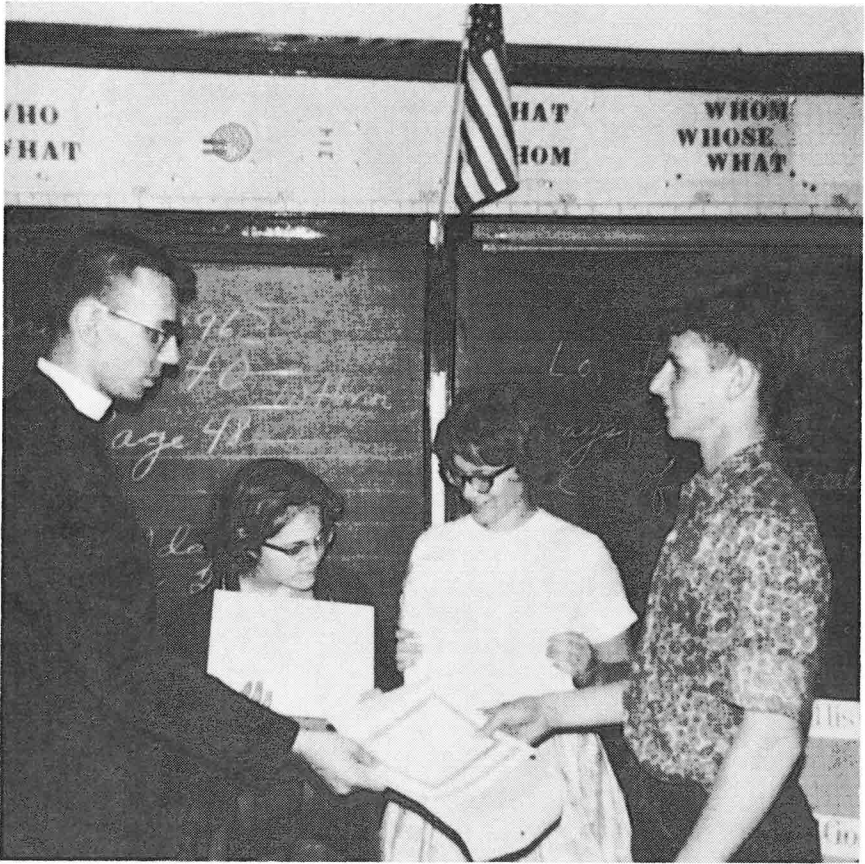
Following the keynote address other brief presentations were offered on various aspects of prayer. Mrs. Sillyman of the New Jersey field answered the question, "Does God Answer Prayer?" Rev. Louis Jasper of New York answered the question, "Does Prayer Change Things?" Mr. G. Paul Snyder of Washington, D. C., answered the question, "Why Do We Call God Our Father?" Rev. C. Roland Gerhold concluded the series with an answer to the question, "What Is Prayer?" The four questions together with their answers took one hour.

The group of 100 participants then broke up into five discussion groups to discuss the relative value of impromptu prayers as opposed to memorized prayers, spontaneous prayers as opposed to habitual praying, postured prayers as opposed to praying in any position in which one happens to find himself, group prayers as opposed to private prayers, and silent prayers as opposed to spoken or signed prayers. Each group reported back to the group on its conclusions and ideas which occurred to the members.

Following the report from the buzz groups, a Prayer Catechism, which appeared in a prior issue of the DEAF LUTHERAN, was read and discussed. The answers were criticized and changes were recommended, based on the understanding of prayer which had been gained from the presentations and the discussion groups.

The afternoon was left open as free time.





A happy moment at the end of the school year—David Newman receives an attendance and honor award from Pastor Pokorny of Indianapolis. David was confirmed last year and now attends Bible classes. He hopes to become a pastor someday. Mary Pugin (l.) and Patty Waters (r.) look on

In the evening session Mr. Donald Peterson of Washington, D. C., was elected chairman of the conference for the coming year, replacing Mr. James Casey. Mr. and Mrs. William Sillyman of New Jersey were elected vice-president and secretary. Mr. G. Paul Snyder was elected to represent the Region as adviser to the Deaf Mission Society.

Pastor Harry Hoemann officiated at the morning worship service on Sunday morning, with Mr. Donald Peterson leading the responses of the congregation. Vicars Haug and

Fleischauer presented a sermon in dialogue based on the parable of the Pharisee and publican praying in the temple.

Following the Sunday noon meal, the retreat adjourned until next year, same time—second weekend in June.

#### **Lutherans Elected to Office in Indiana Association**

*Indianapolis, Ind.* At its biennial convention on June 1 and 2 the Indiana Association of the Deaf elected five new officers. Two of the officers

are members of the Lutheran Church. Mr. James Swalley, the new first vice-president, is a member of the Lutheran deaf congregation in Terre Haute. Mr. Joseph Kindred, the new secretary, is a member of Peace Congregation in Indianapolis. Mr. Kindred, also secretary for the congregation, commented, "I hope I can keep the 'Thee's' and 'Thou's' out of the association minutes." Pastor Pokorny of Indianapolis was guest minister to the convention and preached on Sunday morning.



Ronnie Rhodes, a baptized member of Peace Lutheran Church for the Deaf, Indianapolis, is an eager helper. An acolyte on Sundays, Ronnie often helps the pastor during the week folding letters and envelopes. This past year Ronnie attended weekday Bible classes taught by his pastor at the Indiana School for the Deaf



Billy Ellwood works fast and hard to get a Bible verse card in the right place. As part of the Bible study class Pastor Pokorny uses Bible verse flip-cards to help the children remember important verses. Billy's mother and father are members of the Lutheran deaf congregation in Terre Haute

### Peace Lutheran Incorporates

*Indianapolis, Ind.* Peace Lutheran Church for the Deaf of Indianapolis, Ind., became incorporated under the laws of the state of Indiana on May 31, 1963. The voters' assembly had ratified a new constitution one month prior to incorporation.

### † Mrs. Nellie Oliver †

*Houston, Tex.* Mrs. Nellie Oliver of Guthrie, Okla., departed this life on Dec. 23.

### Norman Gaddie Baptized

*Denver, Colo.* Norman Willie, infant son of Mr. and Mrs. Elmer Gaddie, Colorado Springs, was baptized on April 7 at Immanuel Lutheran Chapel for the Deaf, Colorado Springs, Colo.

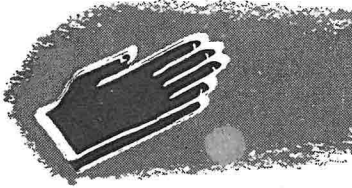
### New Members at Beaver Falls

*Pittsburgh, Pa.* Mr. and Mrs. Bert Pitzer of Freedom, Pa., were recently received as members of the Lutheran Church of the Deaf at Beaver Falls.



Rev. Frank Wagenknecht welcomes Mr. and Mrs. Bert Pitzer as members





# Devotions

## “Light for Your Way”

### Daily Bible Readings for August

August 1 — John 14:1-14	August 16 — 1 John 2
August 2 — John 14:15-31	August 17 — 1 John 3
August 3 — John 15	August 18 — 1 John 4
August 4 — John 16	August 19 — 1 John 5
August 5 — John 17:1-19	August 20 — 2 John
August 6 — John 17:20-26	August 21 — 3 John
August 7 — John 18:1-27	August 22 — Revelation 1
August 8 — John 18:28-40	August 23 — Revelation 2:1-11
August 9 — John 19:1-16	August 24 — Revelation 2:12-29
August 10 — John 19:17-42	August 25 — Revelation 3:1-13
August 11 — John 20:1-18	August 26 — Revelation 3:14-22
August 12 — John 20:19-31	August 27 — Revelation 4
August 13 — John 21:1-14	August 28 — Revelation 5
August 14 — John 21:15-25	August 29 — Revelation 6
August 15 — 1 John 1	August 30 — Revelation 7
	August 31 — Revelation 8

**Go to Church — Regularly**

---

## ORDER FORM

### THE DEAF LUTHERAN

210 N. Broadway, St. Louis 2, Mo.

Subscription Price: \$1 per Year

Amount enclosed \$ \_\_\_\_\_  New  Renewal

If Renewal, please send address label. →

Please print name and address. Thank you.

Name \_\_\_\_\_

Street or Route \_\_\_\_\_

City \_\_\_\_\_ Zone \_\_\_\_\_

State \_\_\_\_\_