

The Deaf Lutheran



*Ephphatha, that is,
Be opened.*

MARK 7:34

Volume 58

May 1966

Number 5



Are you a member?

The Board for Missions of The Lutheran Church — Missouri Synod

Secretary for Deaf Missions:

Rev. H. W. Rohe, 210 N. Broadway, St. Louis, Mo. 63102 (314) 231-6969

Commission for Deaf Work (Advisory):

Rev. Elmer W. Koberg, 1365 First Ave., S. W., Cedar Rapids, Iowa 52400

Rev. Walter Uhlig, 444 Locust St., Seward, Nebr. 68434

Mr. Fred Fiechtner, 1334 8th Street, S., Fargo, N. Dak. 58101

Lutheran Deaf Mission Staff

Rev. Wm. Aiello, 54 Hempstead Road, Trenton, New Jersey 08610	(609) 585-5263
Rev. Orlin S. Anderson, 104 Finley St., Jacksonville, Ill. 62650	(217) 243-2528
Rev. Clark R. Bailey, 2406 107th Avenue, Oakland, Calif. 94603	(415) 632-0845
Rev. Robert A. Bauer, 5808 113 B St., Edmonton, Alta., Can.	(403) 434-4246
Miss Johanna Becker, 11155 70th St., Edmonton, Alberta, Canada	
Rev. S. G. Behrends, 1401 No. West St., Santa Ana, Calif. 92703	(714) 531-8675
Rev. James Bengelsdorf, 8408 Madison Ave., Des Moines, Iowa 50322	(515) 276-8479
Rev. John A. Beyer, 1101 15th Ave., Seattle, Wash. 98122	(206) 324-2200
Rev. R. G. Blakely, 233 Winter Street, Norwood, Mass. 02062	(617) 769-3942
Rev. N. E. Borchardt, 11719 Evanston Ave., Detroit, Mich. 48213	(313) 527-7023
Rev. E. Bottlinger, 4609 Watling St., S. Burnaby, Vancouver, B. C., Can.	(604) 433-1763
Rev. Clarence Bremer, 1400 Bluff St., Fulton, Mo.	(314) 642-4737
Rev. Robert Bremer, 1017 N. Chevrolet, Flint, Mich. 48504	(313) 767-2185
Lay Worker Alex Brodie, 101 Royal Ave., Apt. 307, New Westminster, B. C., Can.	(716) 334-3629
Rev. Walter Busby, 263 Camelot, Rochester, N. Y. 14623	(608) 249-8076
Rev. Robert M. Corl, Jr., 1929 Huxley St., Madison, Wis. 53704	(415) 752-6761
Rev. E. Theo. DeLaney, 441 7th Ave., San Francisco, Calif. 94118	(214) 352-8604
Rev. William E. Duey, 3744 Davila Ave., Dallas, Tex. 75220	(314) 642-5040
Rev. P. N. Ernst, 2100 W. Broadway, Columbia, Mo. 65201	(816) 561-3849
Rev. A. E. Ferber, 3807 Gilham Rd., Kansas City, Mo. 64111	(717) 235-5661
Rev. W. Ferber, 617 14th St., S., Fargo, N. Dak. 58101	(612) 926-5470
Mrs. Florence Finke, 5149 Penn Ave., S., Minneapolis, Minn. 55419	
Vicar Peter Franzman, 5841 Maplewood Dr., Apt. B., Indianapolis, Indiana 46224	(317) 283-2623
Rev. Theodore Frederking, 9902 N. 5th Ave., Phoenix, Ariz. 85021	(602) 944-1911
Rev. F. P. Gehrs, 694 Beaverbrook St., Winnipeg 9, Manitoba, Can.	(204) 338-1878
Rev. G. A. Gehrs, Jr., 6262 Soledad, Riverside, Calif. 92504	(714) 689-6571
Rev. C. Roland Gerhold, 510 Parker St., Newark, N. J. 07104	(201) 485-2260
Rev. Francis G. Gyle, Fla. School for the Deaf, St. Augustine, Fla. 32084	
Rev. Larry Harris, 4807 N. E. Rodney, Portland, Oregon 97211	(503) 287-6244
Rev. Don Haug, 1066 Chamboard, Houston, Texas 77018	(713) 682-3196
Rev. A. L. Hauptman, 205 N. Otis, St. Paul, Minn. 55104	(612) 721-3239
Rev. Martin Hewitt, 1221 Virginia Ave., Lakewood, Ohio 44107	(216) 226-8340
Vicar Daniel Hodgson, 143-30 Cherry St., Flushing, L. I., N. Y. 11355	(212) 939-3117
Rev. Harry W. Hoemann, 1103 Lamberton Dr., Silver Spring, Md. 20902	(301) 949-7611
Rev. Louis Jasper, 217-11 54th Ave., Bayside, N. Y. 11364	(212) 229-7024
Rev. A. T. Jonas, 1233 S. Vermont Ave., Los Angeles, Calif. 90006	(213) 735-8630
Vicar C. Jones, 117 N. 32nd St., Apt. A, Great Falls, Montana 59401	452-8407
Rev. Martin Kosche, 116 Walnut St., Delavan, Wis. 53100	(414) 728-5980
Rev. W. H. Lange, 5070 Lake Street, Omaha, Nebr. 68104	
Rev. Donald Leber, 889 N. Willett Ave., Memphis, Tenn. 38107	(901) 274-9246
Rev. Roger Leonhardt, 308 E. 14th St., Devils Lake, N. Dak. 58301	662-3267
Rev. Wm. Ludwig, 360 Morse Road, Columbus, Ohio 43214	
Rev. Leroy W. Mason, 8448 S. Indiana St., Chicago, Ill. 60619	(312) 846-2069
Rev. Martin E. A. Mueller, 2571 N. Grant Blvd., Milwaukee, Wis. 53210	(414) 445-7230
Mrs. Doris Myhre, 3790 East 6th Ave., Hialeah, Fla. 33010	(305) 691-1288
Rev. W. O. Neisch, 3502 Broad, Parkersburg, W. Va. 26104	(304) 428-5826
Rev. Ervin Oermann, 1624 29th St. North, Birmingham, Ala. 35204	(205) 251-8524
Rev. Daniel H. Pokorny, 739 E. 53rd St., Indianapolis, Ind. 46220	(317) 283-2623
Rev. Floyd Possehl, 6301 Alamo, St. Louis, Mo. 63105	(314) 727-1752
Vicar Myron Prok, 4854 Taylor, Apt. No. 2, Omaha, Nebr. 68104	(402) 558-5672
Rev. Wm. F. Reinking, 68 Begonia Rd., Yao Yat Chuen, Kowloon, Hong Kong	806999
Rev. Geo. C. Ring, 812 South Day, Sioux Falls, S. Dak. 57103	(605) 334-7956
Rev. Rodney Rynearson, W. 3614 Wellesley, Spokane, Wash. 99205	(509) 328-9673
Rev. E. Scheibert, 1400 N. Ridgeway Ave., Chicago, Ill. 60651	(312) 235-7480
Rev. Earl J. Thaler, 32 Brunswick Ave., W. Hartford, Conn. 06107	(203) 521-6677
Rev. Delbert Thies, Juniata, Nebr. 68955	
Rev. Frank Wagenknecht, 2920 Gilmore Ave., Pittsburgh, Pa. 15235	(412) 371-7064
Rev. W. A. Westermann, 809 Fairmont, Greensboro, N. C. 27401	(919) 274-7251

THE DEAF LUTHERAN

Official Paper of the Board for Missions
The Lutheran Church — Missouri Synod

Published monthly by Concordia Publishing House, St. Louis, Mo. 63118. Subscription price, \$1.00 a year. Second-class postage paid at St. Louis, Mo.

THE DEAF LUTHERAN goes to press on the 1st Friday, 4 weeks before issue. Send all news, pictures, stories, and articles by the 12th of the month, 7 weeks before issue, to Rev. Martin A. Hewitt, Editor, 1221 Virginia Ave., Cleveland, Ohio 44107

Send subscriptions, address changes, and cancellations to THE DEAF LUTHERAN, 210 N. Broadway, St. Louis, Mo. 63102

For promotional materials write Rev. Earl Thaler, Promotion Manager, 32 Brunswick Ave., West Hartford, Conn. 06107

The Shepherd of God's People

— Our Pastor —

Part 2

One Year as Vicar

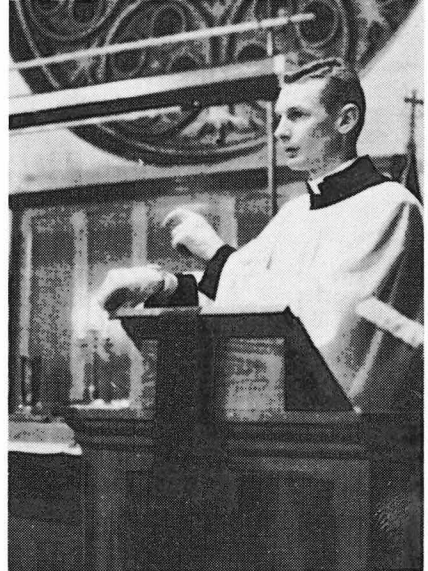
After watching programs on television like *Dr. Kildare*, most of us have some understanding of what it means to be an intern. The person who wants to be a doctor completes his studies in a school for medicine and then works in a hospital for a year as a doctor-in-training — an intern. He works with doctors who have many years of experience to help him learn and prepare for his profession as a doctor.

The vicar in the church is like a medical intern. Between the 2d and 3d year of his seminary training, the vicar leaves the sem-

inary and works for a year as a student-pastor. He works under the guidance of a pastor who has years of experience to help the vicar prepare for his calling of preaching the Gospel of Jesus Christ.



Leading the congregation in worship takes hours of preparation at the beginning of the year of vicarage



Many vicars in hearing churches preach only once a month. Vicars working with the deaf gain valuable experience by preaching almost every week

Practical Experience

The vicar has many responsibilities during his vicarage. He must preach and teach, visit and counsel. He will work with young people and help the pastor in many different ways, but his first responsibility is to learn.

At the seminary the student learns how to write a sermon. As

a vicar he learns to understand people and preach according to their needs. At the seminary he prepares a sermon for a professor who will give him a mark or a grade. As a vicar the young man prepares a sermon so that the Word of God will touch the hearts of people who are bought with the blood of Jesus Christ.

If the vicar is assigned to work with the deaf, he may learn more from teaching than he will from any other part of his vicarage. The vicar must spend many hours in preparation for teaching classes of deaf children. He learns to avoid many mistakes by discussing lesson plans with the pastor, but experience is still the best teacher.

In addition to teaching religion

to deaf children in Sunday school classes and at the schools for the deaf, the vicar may also be asked to teach the language of signs. In some areas of our country our church works closely with the medical staff in hospitals, helping them to communicate with the deaf in the language of signs. This responsibility of teaching the language of signs to others has helped many vicars improve their own knowledge of the language.

Full-Time Experience

What does a vicar do with all his time? Too much of his time is spent traveling from one place to another. He travels by bus or train or car to the many places where he preaches and conducts services. He must travel to the



A very important part of the vicar's training is learning to know deaf children and how to teach them



The vicar is willing to help the members of the congregation with their problems. Sometimes he needs advice from the pastor to give the necessary help

different schools for classes with the children. He makes calls on the many people who live in different parts of the city and state. He visits the sick in the hospitals and in their homes. He also invites members in the church to make calls with him so that they too will learn to take up this work of bringing Christ to the deaf and bringing the deaf to Christ.

The vicar often gives much of his time to the young people in the church. The Walther League is not the complete responsibility of the vicar, but he spends more time with this group than he does with the ladies' aid, the men's club, or the church council. However, he does need and gets experience with these groups also.

Counseling is a very difficult area for a vicar to gain experience. Many times, when the members of the church have a problem, they will go to their pastor, the person with more experience.

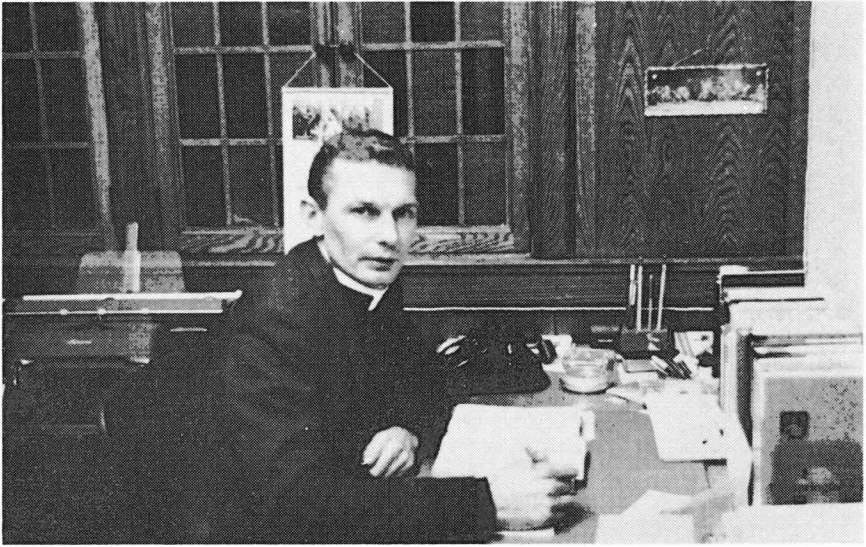
However, once in a while the vicar finds himself listening to a member's problem too. Here again, he seeks the help and guidance of his pastor-adviser.

Though the pastor and the vicar see each other almost every day and often work together, they still get together for a weekly meeting to plan the work for the week ahead and to discuss what has happened in the week past. Here the vicar has a chance to question why the pastor does things the way he does. He may have suggestions for doing some things in a different way. Then the pastor can explain how the suggestion was tried in the past, or he may help the vicar to develop the new ideas to be used in their program.

At times it is most difficult for the vicar to find time for study. Many books and magazines have been published about this special ministry to the deaf, but these are not part of the seminary training program. The pastor wants his vicar to study some of these books and materials so that he may bet-



Time is well spent when the pastor and his vicar sit down together to talk about their work



It is difficult but necessary for the vicar to take time for study

ter understand his work and benefit more from his year of practice and experience.

The Congregation Helps

The vicar is often a wonderful help to a congregation and its pastor. Yet the congregation must remember that this young man has come to them for an education. He is not the assistant pastor. He may not serve the Lord's Supper or perform official acts. Nor is he the errand boy to do the jobs no one else will do. He has come to learn. As the vicar receives the experience he needs

for the present and the future, the people who receive his services also become his teachers.

The year of vicarage provides the student with many answers to his questions. He also has many questions to ask his professors when he returns for his final year of study at the seminary.

Let us thank the Lord for our vicars and pray that God would help us to give to each vicar as much and even more than we receive from him.

REV. LOUIS JASPER
Elmhurst, New York

A Challenge to Lutheran Deaf

LDMS Reports

We received a letter from Dr. H. A. Mayer, member of the new Board for Missions, The Lutheran

Church — Missouri Synod. The first time we read the letter we were discouraged, for he states that "despite the enthusiastic re-

port of Rev. C. R. Gerhold (on his 3-week survey of Nigeria and Ghana) the Board of Missions has decided not to take up work (among the deaf in Africa) at this time."

Dr. Mayer's reasons were as follows: (1) Only a small number of deaf were found in Eastern Nigeria, where our church is now working. (2) Because no money is available, it is not possible for the board at this time to operate the school at the Home for Young Deaf at Ibadan, Western Nigeria. (3) It would not be wise for our church to operate a school for the deaf in the Ibadan area because it would be duplicating the efforts of other agencies.

But We Have Hope

We read Dr. Mayer's letter again. We note that our church did not close the door against the deaf of Africa. Dr. Mayer also said that "it is the board's hope that our missionaries in Africa will keep their eyes open and make use of every opportunity to serve deaf people wherever they find them."

Here is a definite opportunity and challenge for the Lutheran Deaf Mission Society. We could correspond with our Lutheran missionaries and laymen in Western Africa who know about unchurched deaf. We could advise them on working with the deaf, and we could support their instruction by sending needed books and supplies.

Dr. Mayer stated that the board in its long-range planning "hopes to eventually find a young missionary who can minister to both the deaf and the hearing." Such a missionary could possibly plan the development of Lutheran deaf missions in Africa.

Here is the real challenge to our Mission Society. This is our real opportunity to push for deaf missions in Africa. From time to time, as the Nigerian church grows, new missionaries will be sent to Africa. We can pray that the Lord will bless the efforts of our church and give us a missionary for Africa who is interested and willing to spend at least part of his time serving the deaf.

Pentecost Offering

Your special offering for the work of the Lutheran Deaf Mission Society is very important. With your gifts you can perhaps open the door for a beginning of our work among the deaf in Africa.

Our special offering goal of \$5,000 is about one half the cost of supporting a missionary in Africa for 1 year.

Perhaps if we offer the Mission Board a gift of this size and show our desire to help the deaf in Africa, the Mission Board will be encouraged to review their decision, find additional funds, and call a missionary for this work.

Remember, *Pentecost Sunday, May 29*, is the day to bring our gifts for Lutheran Deaf Mission Society work. But let's not wait

until May 29. Let's put something into our LDMS envelope each day with the prayer that the Lord will bless our mission work.

May God the Holy Spirit give

us *joy* in our faith in Jesus, and may He give us *love* and *zeal* for missions.

REV. MARTIN KOSCHE
Delavan, Wis.

Stewardship Corner

Do You Live?



Martin Luther once said: "If someone rapped at the door of my heart and asked, 'Who lives here?' I would answer, 'Martin Luther once lived here, but he moved out, and Jesus Christ moved in.'"

Could you say that about your heart and life?

Think with me a moment and look back on the last 2 months. If we listened to God's Word during Lent as we should have, then our hearts felt pain and sorrow as we saw again Jesus' bitter suffering and death. Our sins nailed Him to the cross, but Jesus said, "Father, forgive them."

What joy we knew at Easter! Jesus lived! Our faith in Jesus will give us an eternal joy when this earthly life is passed. Jesus' resurrection promises us that.

What does this mean for our lives today and tomorrow?

It means it is not enough only to say, "I believe." We must let our faith live in our hearts. It must show itself by our words and actions. God wants us to live for Him now. In the words of a hymn verse Jesus says, "I gave Myself for thee, Give thou thyself to Me."

He wants us to give Him our hearts. He wants us to love Him, respect Him, trust Him. If it must happen, we must be willing to suffer as Christians and even be willing to lose all things before giving up our faith and hope. He asks us to be willing to lay down our lives for Him.

Can you say it? Can you do it? With the help of the Holy Spirit you can live and say as did St. Paul, *I was crucified with Christ, and I don't live anymore, but Christ lives in me. The life I now live in my body I live by believing in the God and Christ who loved me and gave Himself for me.* (Galatians 2:20, Beck)

Notes from the Secretary for Deaf Missions

Dear Friends:

Starting this month and continuing through the summer, one of the major activities of our deaf churches will be the *regional conference*. Since these conferences are under the guidance of a *regional counselor*, I would like to speak with you about their work.

Meet Your Counselor

Regional counselors, first of all, are pastors to the deaf. Because of their ability and experience they have been chosen by Ephphatha Conference and the Board of Missions to advise our pastors and congregations in their regional area.

We have six such regions in North America, and therefore six counselors. They are: (1) the Pacific Region — Rev. Rodney Rynearson, (2) the Midwest Region — Rev. George Ring, (3) the Central Region — Rev. Martin Kosche, (4) the Great Lakes Region — Rev. Norbert Borchardt, (5) the Eastern Region — Rev. Harry Hoemann, and (6) the Dixie Region — Rev. W. A. Westermann.

These regional counselors assist the Board for Missions in caring for the needs of the pastors and congregations in their region. They review the quarterly and annual reports of their region and may offer suggestions to improve the work of various fields.

When a church is without a pastor because of a vacancy or sick-

ness, the counselor helps provide worship services and arranges that the work of the congregation continues. He meets with the congregation to help in the calling of a new pastor. He advises them about any major change in their work, such as building a new church, relocating a church, or dividing a mission field.

Annual Regional Conference

All deaf churches and their members are asked to meet once a year to discuss and plan the work of their region. At the regional conference officers of our various congregations report to the conference their accomplishments of the past year and their plans for the future. Other laymen lead the group in topic discussions for spiritual growth and Christian living.

The counselor also reports to the conference concerning work among the deaf in North America and throughout the world. The work of the Lutheran Deaf Mission Society is discussed, and any special plan or program of Ephphatha Conference is promoted. The counselor meets with the pastors, parish workers, and volunteer workers at a special session during the conference to encourage them in their many tasks.

Your regional counselors have been busy this past winter planning for this year's regional conference. Announcements appear once in the DEAF LUTHERAN and

are sent by special letter to each congregation. Please watch for these announcements, and do your very best to attend your regional conference and cooperate with your counselor.

Wherever possible, I will make every effort to be with you at the conference in your region. I am especially anxious to report to you the changes that have and will be taking place in our Lu-

theran deaf work. If I cannot be present with you at your regional conference, I will send a report to your counselor and ask him to read it to you.

Remember in your daily prayers your local congregation, your Synod, your Mission Board, and the pastors who travel over a million miles a year to serve you.

REV. H. W. ROHE
St. Louis, Mo.



Lutheran Women Serve

Oakland, Calif. The Ladies Guild of Memorial Lutheran Chapel for the Deaf, Oakland, held its annual bazaar and turkey dinner on Friday, Nov. 12. About 65 deaf attended the fellowship gathering. Various items of handiwork, baked goods, and candy were offered.

Following the turkey dinner six of the ladies presented a skit, "If Mite Boxes Could Talk." They showed how different ladies treat their Lutheran Women's Missionary League mite boxes. Some women "feed" them regularly, some give them something once in a while, and others forget them. Some women even "operate" on their boxes to remove what has been put in, while other

FIELD

GLEANINGS

mite boxes are left to collect dust on the shelf. The happy mite box is the one that is remembered daily with a prayer and an offer-



Rev. Clark Bailey, pastor of the Oakland, Calif., Field, receives a gift of a black stole from the members of the Lutheran Women's Missionary League in his congregation

ing for the Lord's work of missions.

After the skit members of the Lutheran Women's Missionary League presented their pastor, Rev. Clark Bailey, with a black stole. Pastor Bailey now has a complete set of stoles, for the first four were given to him by the members of the Ladies Guild last spring.

The Missionary League of Memorial Congregation proudly displays an attendance banner in their meeting room. The banner was awarded to them again by the Concordia Zone Lutheran Women's Missionary League at their Fall Rally, Oct. 25, for having the largest percentage of members present.

MRS. RUSS KRUEGER
Society President

Dixie Deaf Lutheran Conference

Camp Lynnhaven, N. C.

May 28—30, 1966

Great Lakes Regional Conference

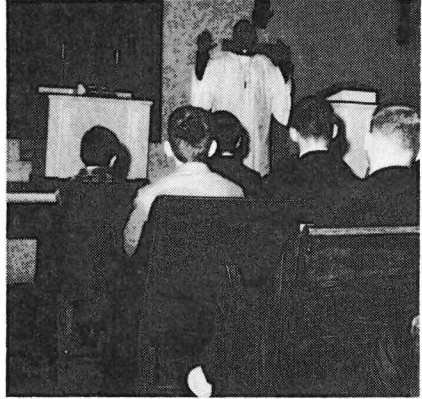
Lutheran School
for the Deaf

Detroit, Mich.

June 17—19, 1966

A Gift for the South New Jersey Field

Trenton, N. J. Germantown Academy of Germantown, Pa., a new Lutheran high school serv-



Rev. William Aiello conducted the morning chapel service for the students at Germantown Academy, a new Lutheran high school, Germantown, Pa., on Nov. 11, 1965

ing the Delaware Valley area and Philadelphia, Pa., has chosen the South New Jersey Field as one of its three mission projects for the school year.

The student body of 35 students gathers an offering for missions during their morning chapel service. They hope to donate a film-strip projector to the mission work among the deaf.

News Notes from the Field

On March 6 the *Samuel Ortiz family* traveled more than 150 miles one way from their home in Yuma, Ariz., to *Christ Lutheran Church for the Deaf, San Diego, Calif.*, to have their three children baptized.

How often do we need to be re-

mindful to be faithful to our Savior! Holy Scripture reminds us in Romans 6:4: *Therefore we are buried with Him by Baptism into death: that like as Christ was raised up from the dead by the glory of the Father, even so we also should walk in newness of life.*

Miss Barbara Gossmann of Indiana was recently elected president of the Epsilon Kappa Chapter of **Gamma Delta**, Lutheran student organization at **Gallaudet College, Washington, D. C.**, for the current school term.

Other officers currently serving are **Arlen Finke** of Minnesota, vice-president; **Gary Schlub** of Ohio, treasurer; **Miss Diane Foster** of Indiana, secretary; and **Ken-**



Ladies of Bethany Lutheran Church (hearing) of West Hartford, Conn., are busy wrapping Christmas gifts for deaf children. Churches and various organizations contribute new items which are used for less fortunate deaf children throughout New England. Each year the ladies of Bethany spend several days wrapping and labeling these gifts.



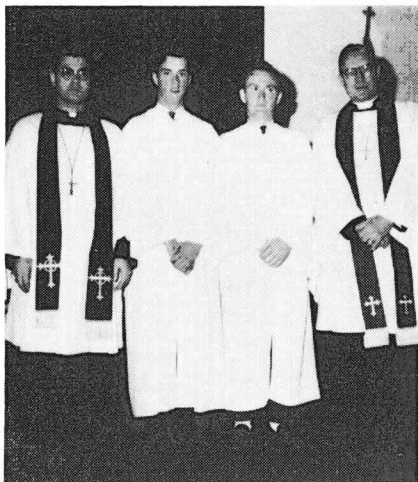
Christmas party for children of the Austine School for the Deaf, Brattleboro, Vt. The party was held at **Trinity Lutheran Church** and sponsored by the religious education staff of the school. Shown serving are three of our faithful teachers (l. to r.): **Mrs. Bridges (Lutheran), Mrs. Davis (Baptist), and Mrs. Long (Lutheran)**

dall Doane of California, liaison officer for non-Lutheran students. **Miss Linda Barwiolek** of Pennsylvania and **Miss Marsha Ries** of Michigan are in charge of social activities.

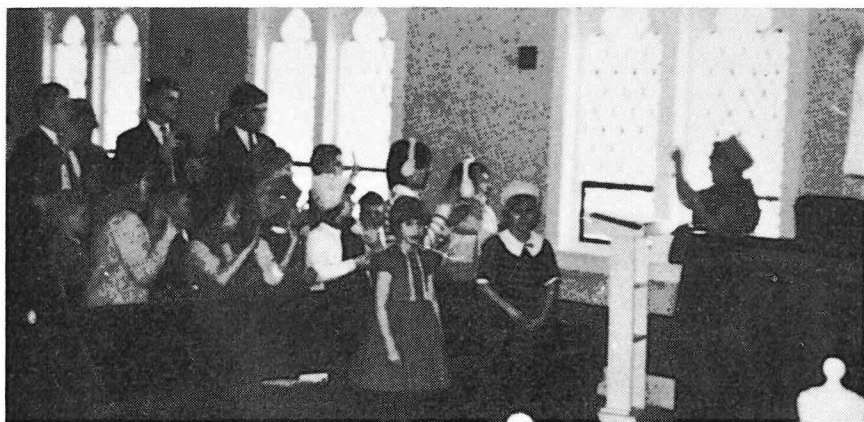
In a most impressive service conducted by the officers of the **Gamma Delta Chapter** at **Gallaudet College** on Sunday evening, Nov. 14 and 15, students were received into the organization by pledging their loyalty and cooperation. **Rev. Harry Hoemann**, **Gallaudet College campus pastor**, and **Rev. H. W. Rohe**, executive secretary of the Board for Missions to the Deaf, witnessed the ceremony.

Approximately \$7,200.00 was raised through the *Stamps for Missions* project during 1965. Monies gathered through this project are placed in the Lutheran Church — Missouri Synod's Church Extension Fund. Interest from last year's balance of \$58,000 has made possible a \$1,000 grant to the Lutheran Seminary in Hong Kong for the purchase of library reference books.

Ladies of the *Mary-Martha Guild* of *Hope Lutheran Church for the Deaf, Portland, Oreg.*, again last Christmas met to assemble boxes of candy, cookies, and fruit to distribute to several members and friends of the church who can no longer get out to church. This year the ladies were able to deliver many of the boxes themselves and add the joy of a visit with their gifts.



Confirmation at Portland, Maine, Nov. 7. The service of worship and rite of confirmation was conducted by Rev. Robert Blakely of Norwood, Mass., and Rev. Earl Thaler of West Hartford, Conn., preached the sermon. (L. to r.) Pastor Thaler, Robert Follansbee of South Portland, Maine, Curtis Gibbert of Turner, Maine, and Pastor Blakely



Brattleboro, Vt. Mrs. Mary Sandberg, member of the Lutheran Church of the Deaf of West Hartford, Conn., interprets a worship service at Trinity Lutheran Church, Brattleboro

Mrs. Sandberg is a hearing person whose parents and husband were deaf. She is a housemother for the older boys at the Austine School for the Deaf and interprets the worship services at Trinity Church every Sunday morning during the school year



LIGHT FOR YOUR WAY

Daily Bible Readings

for May

- May 1** — **1 Samuel 31:1-13.** Saul dies as an unbeliever in shame. Ask God to send His Spirit to all people in our nation. Pray that they see their sin and their need for repentance.
- May 2** — **1 Samuel 16:1-13.** God chooses a young man as king. Pray that many young people in our church will accept God's call to become pastors and teachers.
- May 3** — **1 Samuel 17:24-54.** A giant's boast is stopped. Pray for the courage to meet difficult times in your life with a strong faith and trust in God.
- May 4** — **1 Samuel 27:1-12.** David fights for Israel. Pray that God will bless the work of the members of your church as they serve Him.
- May 5** — **2 Samuel 2:1-11.** God's people elect a king. Pray that the parents in your church rule their families wisely.
- May 6** — **2 Samuel 5:1-12.** All Israel accepts David as their king. Pray for your congregation that God will unite all members under His guidance of love and forgiveness.
- May 7** — **2 Samuel 7:1-17.** God gives David a comforting promise. Pray that God may give you gladness as you do His work in your church.
- May 8** — **2 Samuel 7:18-29.** A great man humbly gives himself to God's will. Ask that God teach you and your family to humbly give yourselves to do His will.
- May 9** — **Psalms 1.** Be faithful to God and He will bless you. Pray for a stronger faith to resist sin and temptation so that you do not fall away from God.
- May 10** — **2 Samuel 11:2—12:23.** A terrible sin in the heat of the body's desire. Pray that God will save you from all temptation.
- May 11** — **Psalms 51.** David is truly sorry for his sin and prays to God with a repentant heart. Ask God to help you remember His mercy and willingness to forgive your sin.

- May 12** — **2 Samuel 15:1-18**. Absalom rebels against his father. Ask God to bless your family with friendship and love for each other. Pray for Mrs. Sonja Leonhardt, pastor's wife, Devil's Lake, N. Dak., and Rev. E. J. Thaler, West Hartford, Conn.
- May 13** — **Psalms 42 and 43**. Separated from God and His place of worship, man feels lost and alone. Ask God to unite your congregation in its worship.
- May 14** — **2 Samuel 16:1-14**. King David is mocked and cursed, but he still shows mercy. Ask God to free you from the eagerness of revenge and the sin of pride.
- May 15** — **2 Samuel 18:19-33**. David grieves for the death of his son. Pray that your family continue in health and faith.
- May 16** — **2 Samuel 24:1-14**. Power and control brings the sin of pride. Pray that you remember that God rules. Pray for Mrs. Janet Hewitt, pastor's wife, Cleveland, Ohio.
- May 17** — **1 Kings 2:1-12**. The death of David the king. Pray that your family remains in love and forgiveness to the end.
- May 18** — **1 Kings 1:15-40**. David chooses a son as his successor. Pray that your children will have success in their life and faith.
- May 19** — **John 20:11-18**. Jesus' ascension brings Him close to us. Pray that you may always know that God is with you. Pray for Rev. Louis Jasper, New York, N. Y.
- May 20** — **1 Kings 3:3-15**. A wise man prays for wisdom. Pray for a knowledge of the truth and the wisdom to act according to it.
- May 21** — **1 Kings 3:16-28**. Solomon's wisdom shows itself. Pray that God will bless the work of your Lutheran Deaf Mission Society.
- May 22** — **1 Kings 6:1-18**. The house of God is planned. Pray for those who are building churches to the glory of God. Pray for Mrs. Ethel Kosche, pastor's wife, Delavan, Wis., and Mrs. Dorothy Mason, pastor's wife, Chicago, Ill.
- May 23** — **1 Kings 8:1-21**. God's people dedicate the temple. Pray that your church may always remain a house of worship. Pray for Mrs. Alberta Jonas, pastor's wife, Los Angeles, Calif.
- May 24** — **1 Kings 8:22-53**. Solomon prays for forgiveness. Ask God to forgive all those who worship with you.
- May 25** — **1 Kings 10:1-25**. Godly wisdom is recognized by the world. Ask God to make His name known to all the world through His people in His church.
- May 26** — **1 Kings 11:1-13**. The temptation and fall of a wise man. Ask God to strengthen the faith of the rich and wise against their special temptations.

- May 27** — **Ecclesiastes 1:1, 2:1-26.** The emptiness of things. Pray that God would give you the strength to see the emptiness of worldly things. Pray for a heart that hopes for heaven.
- May 28** — **Ecclesiastes 12:1-14.** Advice from the wise for the young people. Pray that God will strengthen your children against the temptations of life. *Tomorrow is Lutheran Deaf Mission Society day.* Pray that our Lutheran deaf will praise God's name by bringing to church their generous gifts for missions.
- May 29** — **Acts 8:4-17.** The Holy Spirit lives in the church. Ask God to give your congregation a full measure of eagerness to do His work. Pray that God will bless the work of the Lutheran Deaf Mission Society.
- May 30** — **Proverbs 2:1-22.** The advantages of accepting wisdom. Ask that your family and you may grow in knowledge and wisdom.
- May 31** — **1 Kings 11:23-43.** The death of Solomon. Ask God to support His people in faith into eternity.

The Lord said: *Be faithful unto death, and I will give you the crown of life.* (Revelation 2:10)

ATTEND CHURCH REGULARLY

ORDER FORM

THE DEAF LUTHERAN

210 N. Broadway, St. Louis, Mo. 63102

Subscription price: \$1.00 a year

Amount enclosed \$ _____ New Renewal

If Renewal, please send address label. 

Please print name and address. Thank you.

Name _____

Street or Route _____

City _____

State _____ ZIP code _____