



# The DEAF LUTHERAN



Official Publication of the International Lutheran Deaf Association & the Board for Missions of the Lutheran Church-Missouri Synod

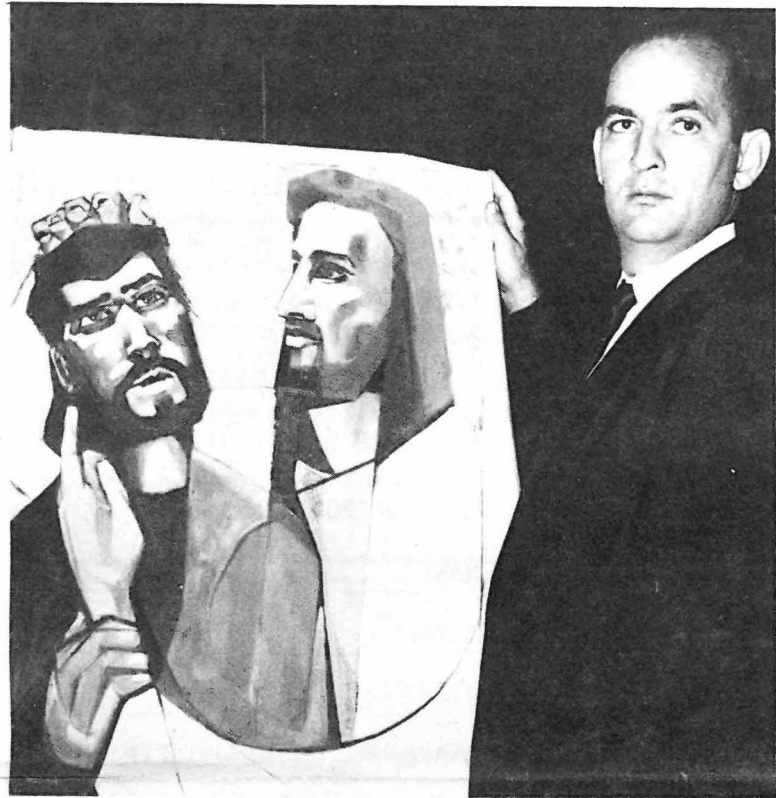
January, 1981

ST. LOUIS, MISSOURI

Volume 73, No.1

## Rev. William F. Reinking Called Into Eternal Glory

## 500 for Christ in '81



-by Rev. Donald Zuhn  
Secy. for North American  
Ministries/Blind & Deaf

How can the ILDA best celebrate the 10th anniversary of this organization? One way, the Board decided at its October meeting, is to bring more deaf people to the Lord Jesus and His Church. Thus the goal-500 new members to Lutheran churches for the deaf during the anniversary year 1981.



Certainly it is true that it is the Lord who adds people to the church (Acts 2:47). We do not dictate to Him what He must do, but we do know that He wants all people to be saved and to come to Him. And it is also true that He gives His Church - you and me! - the responsibility of preaching and telling the Good News so that people do become His followers (disciples - Matthew 28:19).

When we set a goal like this, we are talking about the work we need to do so that the Lord can add 500 new people to the Church. Our work includes preaching, teaching, and explaining the Good News to people ... not every Christian has the gifts from the Holy Spirit for those jobs (Ephesians 4:11-12). But every Christian can pray for God's blessings to those people who are telling and explaining about Jesus. In this way we all work together toward this goal.

500 for Christ in '81! In recent months The Deaf Lutheran has printed lists of people that the Lord has added to our Lutheran churches of the deaf. Let each of us do our part to make these lists longer each month in 1981 - all for the Glory of God!

SEE CHART ON PAGE 7

Photo above from the files of The Deaf Lutheran dated July 1960 showing the late Reverend William F. Reinking unveiling Ephphatha painting at Ephphatha Conference in Lutheran Day School, Detroit, Michigan.

The Ephphatha painting now hangs in the office of the Secy. for North American Ministries of the Blind and Deaf, Rev. Don Zuhn, 500 N. Broadway, St. Louis, MO - headquarters of the Lutheran Church - Missouri Synod.

ST. LOUIS - The Reverend William F. Reinking, 52, pastor of Pilgrim Church, Indianapolis, IN, and son of the late Mr. and Mrs.

Julius H. Reinking of St. Joseph, Michigan, died November 28th at his home in Indianapolis after a short illness.

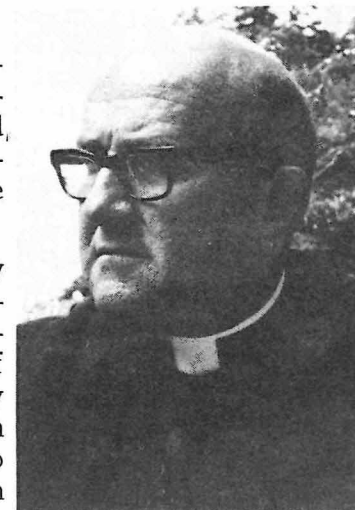
It all began in late August when a low back pain put Rev. Reinking on bed rest for a little over a week. Afterwards, he went to his doctor's office for a series of tests which were not very encouraging. On September 18th, Rev. Reinking was admitted to St. Vincent Hospital for further testing. A week later, exploratory surgery confirmed the worst fears for the Reinking family. The doctors informed them that Pastor Reinking had cancer of the pancreas which had also spread to his liver and lymph nodes. Although stunned by this news, Pastor Reinking and his wonderful and devoted wife, Sue, never lost hope and prayed constantly.

Then followed the hospital convalescence and first round of chemotherapy. Pastor Bill was then released from the hospital. He and Sue spent the next month at home. (Please turn to page 3).

## Pastor Corl Retires

After 20 years of ministry to deaf people in the Lutheran Church - Missouri Synod, Rev. Robert Corl recently retired from his ministry in the North Wisconsin District.

Pastor Corl was formerly a pastor in the American Lutheran Church, where his interest in ministry to the deaf began. After a year of study with Dr. George Gaertner in California, he was called to Silent Lutheran Church in Madison, Wisconsin in 1961. (please turn to page 5)



The Rev. Robert Corl



# Happy New Year? ? ?

-by Rev. Ron Friedrich  
Lutheran Deaf Mission Newsletter

1980 is past. Many good things happened in our lives last year. But the world news was terrible. 1980 was a year that many of us would like to forget, if possible.

But will 1981 be any better? Christian people, please note: Christian joy does not depend on the weather. Christian joy does not depend on the economy. Christian joy does not depend on the national election. Christian joy does not depend on international peace. Christian joy does not depend on the things that happen around us.

What does the Bible say to us?

Matthew 24:6-13: "You will hear about wars and stories about wars that are being fought -but don't be afraid. These things must happen before the end comes. Nations will fight against other nations, kingdoms will fight against other kingdoms. There will be times when there is no food for people to eat. And there will be earthquakes in different places. These things are the first pains when something new is born...There will be more and more evil in the world. So most believers will stop showing love. But the person who continues strong to the end will be saved."

Romans 8:18,35-39: "We have sufferings now, but the sufferings we have now are nothing compared to the great glory that will be given us...Can anything separate us from the love of Christ? No! Can trouble separate us from Christ's love? No! Can problems or persecutions separate us from Christ's love? No! Will danger or even death separate us from Christ's love? No! But in all these things we have full victory through God who showed us His love for us. Yes, I am sure that nothing can separate us from the love of God."

John 16:21,22,33: "When a woman gives birth to a baby, she forgets the pain. She forgets because she is so happy that a child has been born into the world. It is the same with you. Now you are sad, but Jesus will see you again and you will be happy. And no one will take away your joy...I have told you these things so that you can have peace in Me (Jesus). In this world you will have trouble -but be brave! I (Jesus) have defeated the world!"

**MAY YOUR WALK WITH THE LORD THIS YEAR LEAD YOU TO NEW DISCOVERIES OF HIS DEEP LOVE FOR YOU!**



# Speak Up! Silence means agreement!

-by Rev. Martin Niemoller  
(German theologian)  
copied from Christ L.C. newsletter  
G. Berninghaus, Lay Minister

In Germany, the Nazis first came for the communists, and I didn't speak up because I was not a communist. Then they came for the Jews, and I didn't speak up because I wasn't a Jew. Then they came for the trade unionists and I didn't speak up because I wasn't a trade unionist. Then they came for the Catholics and I didn't speak up because I was Protestant. Then they came for me, and by that time, there was no one left to speak for me."

There is so much said by saying nothing. Also much is said by doing nothing. Christ Jesus did not say anything in defense of Himself but He did something! He gave His life for you and me!

By not going to church, we are telling the world that the life of Jesus was not worth much! By not going to church, we are telling the world, "I do not believe in God! By not speaking up when we see someone doing something wrong, we are saying, "I agree" or "I don't care." Most of the time our silence says it all! Christ died for us and He was saying, "I love you!"

Church attendance is down. Giving to the glory of God is down. From all this, does it mean: you don't pray, you don't believe, you don't think there is a hell, and there is no heaven!

The Bible says, "Work while it is day, before night comes when no man can work." The Bible is saying, tomorrow may never come! Silence gives the false idea that everything is okay.

Friends, God cares about you! Please, for Jesus sake and the power of the Holy Spirit, care and prepare for your future, after this life has ended! !



# The DEAF LUTHERAN

Jan. 1981; Vol. 73, No. 1

(ISSN 0164-3673)

OFFICIAL PUBLICATION OF THE INTERNATIONAL LUTHERAN DEAF ASSOCIATION AND THE BOARD FOR MISSIONS OF THE LUTHERAN CHURCH-MISSOURI SYNOD. PUBLISHED MONTHLY BY CONCORDIA PUBLISHING HOUSE, 3558 SO. JEFFERSON AVE., ST. LOUIS, MO. 63118. SUBSCRIPTION FEE IS \$3.50 PER YEAR. SECOND-CLASS POSTAGE PAID AT ST. LOUIS, MISSOURI.

POSTMASTER: SEND ADDRESS CHANGES TO:

THE DEAF LUTHERAN, c/o ELMER D. FRANCISCO  
6861 EAST NEVADA, DETROIT, MI 48234

THE DEAF LUTHERAN GOES TO PRESS ON THE 15th OF THE MONTH, TWO WEEKS BEFORE ISSUE...SEND ALL PICTURES, NEWS, STORIES, AND ARTICLES AT LEAST ONE MONTH BEFORE THE NEXT ISSUE TO THE EDITOR:

THE DEAF LUTHERAN  
ARCHIE D. MARSHALL, EDITOR  
3743 PALM STREET  
ST. LOUIS, MISSOURI 63107

## FOR NEW SUBSCRIPTIONS

CUT OUT AND FILL IN THIS COUPON. ENCLOSE YOUR CHECK OR MONEY ORDER OF \$3.50 FOR A ONE YEAR'S SUBSCRIPTION AND MAIL TO:

ELMER D. FRANCISCO  
BUSINESS MANAGER:  
THE DEAF LUTHERAN  
6861 EAST NEVADA  
DETROIT, MI 48234

NAME \_\_\_\_\_

ADDRESS \_\_\_\_\_

CITY \_\_\_\_\_

STATE \_\_\_\_\_ ZIP \_\_\_\_\_

Thank You For Your Subscription

## FOR CHANGE OF ADDRESS

FILL IN THIS CLIPPING WHICH HAS YOUR OLD ADDRESS ON THE REVERSE SIDE. SEND TO:

ELMER D. FRANCISCO,  
BUSINESS MANAGER  
6861 EAST NEVADA  
DETROIT, MI 48234

\*\*\*\*\* NEW ADDRESS \*\*\*\*\*

NAME \_\_\_\_\_

ADDRESS \_\_\_\_\_

CITY \_\_\_\_\_

STATE \_\_\_\_\_ ZIP \_\_\_\_\_

## God's 1,000 Club

This Club is open to any person who wish to help with the operating expenses of the ILDA Board of Directors. Annual dues is \$10 per person. Details about this club will be sent on request. Please make your check or money order payable to:

ILDA Treas. Elmer Francisco  
6861 East Nevada  
Detroit, MI 48234

NAME \_\_\_\_\_

ADDRESS \_\_\_\_\_

CITY \_\_\_\_\_

STATE \_\_\_\_\_ ZIP \_\_\_\_\_

Thank You for Your Contribution!

# The Rev. William F. Reinking

(continued from page 1)

On November 3rd, the second round of chemotherapy began. Those treatments combined with many prayers kept everyone's hopes up high that those wild cells would be destroyed. However, as the weeks went by, Pastor Reinking became more and more fatigued. Finally, very early on a Wednesday morning, the 12th of November, Pastor Bill was again admitted to St. Vincent.

During the week of hospitalization, all clinical signs made it clear that the chemotherapy treatments were not doing any good. Then Pastor Bill and Sue decided to go home. He wanted to die at home and Sue wanted it that way too. They left the hospital that Thursday morning with joy in their hearts. They could be together at home and all their children with their families and loved ones who were coming home for Thanksgiving - God be praised. There was the opportunity for Pastor Bill and Sue together to have great talks with each one of their beloved children - sharing joys - turning over the reins to others, holding each other close and telling of the love they have for each other - always praising God.

Pastor William F. Reinking departed this life the day after Thanksgiving with all his family around him, entering into everlasting life. His Advent, Christmas, Ehipany, Lent, and Easter are now complete. Again, praise God.

Funeral services were held December 1st at the church where he had been pastor since 1974.

Pastor William F. Reinking was born Feb.22, 1928, in South Bend, IN, and moved to St. Joseph, MI, with his family as a young boy. He was graduated from Concordia Seminary, St. Louis, MO, and had served as pastor of Holy Cross Church for the Deaf, St. Louis, from 1952-59, was executive secretary for Deaf Missions, The Lutheran Church - Missouri Synod, 1959-64, and Missionary for the Deaf of the Far East at Hong Kong from 1964-66. Prior to his pastorate in Indianapolis, Pastor Reinking had served in St. Louis as area secretary of Missions of Africa and the Middle East.

Survivors include: his wife, Sue E., three daughters, two sons, three grandchildren, a sister, Mrs. Dean (Barbara) DeVries of St. Joseph, MI, and a brother, Robert Reinking of Watervliet.

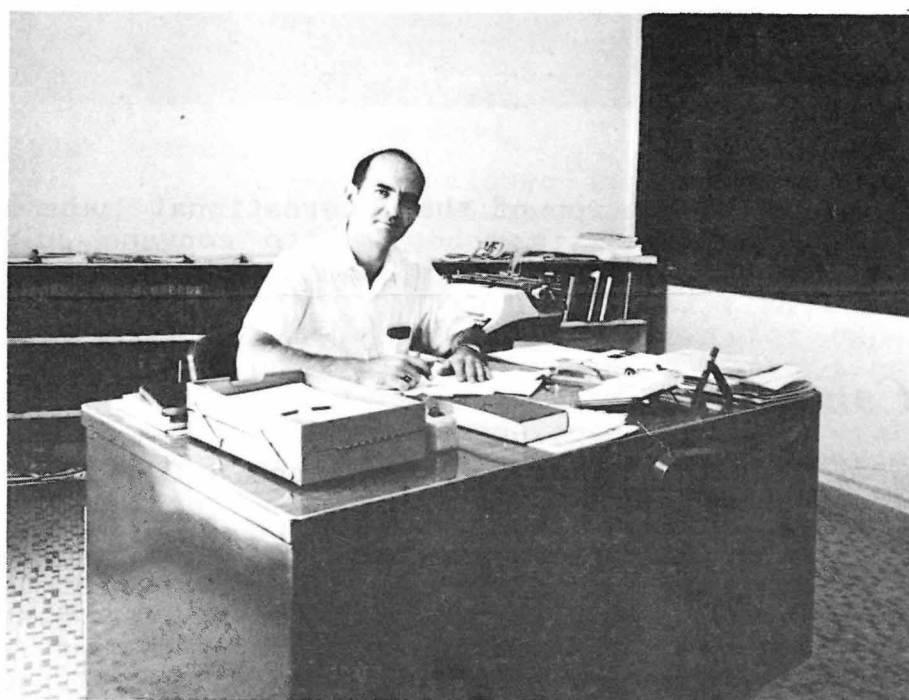
*"In Him was life and the life was the light of men, the light shines in the darkness and the darkness has not overcome it." John 1:4,5.*



Pastor Reinking is shown with a group of deaf at Taipei Airport, Formosa, in April 1960. His presence there impressed many deaf.



THE FIRST BAPTISMS of deaf persons in the China Evangelical Lutheran Church, Taiwan, were administered September 30, 1960, by Rev. William F. Reinking, Counselor for work among the deaf in the Far East. Counselor Reinking worked with the CELC and helped develop plans for expanding evangelism work among the island's 12,000 deaf.

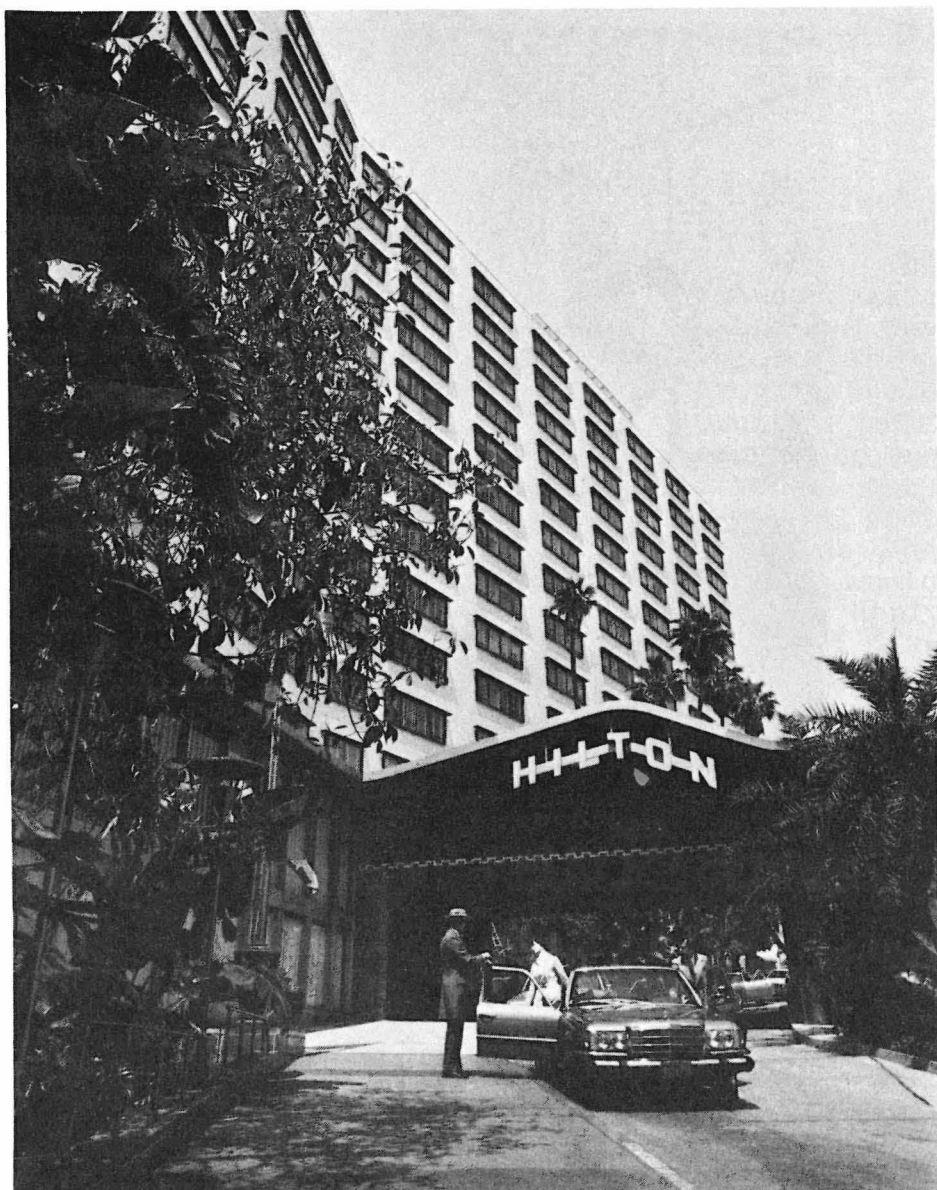


Rev. Reinking shown working in his office at Concordia Seminary, Hong Kong. This was in 1964 during his tenure as Counselor for Work Among the Far East Deaf.



AND I SAID TO THE MAN WHO STOOD AT THE GATE  
OF THE YEAR:  
GIVE ME A LIGHT THAT I MAY TREAD SAFELY  
INTO THE UNKNOWN!  
AND HE REPLIED: GO OUT INTO THE DARKNESS AND  
PUT THINE HAND  
INTO THE HAND OF GOD. THAT SHALL BE TO THEE  
BETTER THAN LIGHT  
AND SAFER THAN ANY KNOWN WAY.





### *Convention*

The next convention of the International Lutheran Deaf Association is scheduled to convene July 9th, 1981 at Los Angeles, California and conclude July 12th, 1981.

\* \* \*

### *Convention Site*

The site of the convention is the Hilton Hotel in the heart of the city of Los Angeles, Calif.

Convention delegates will love to come here with their families to vacation a few well earned days here in Los Angeles. There are so many tourist attractions such as Disneyland, Knotts Berry Farm, Magic Mountain, Movie & Television Studios, Marineland, and etc. You can get some assistance from our tourist agencies or our convention committee. The International Airport is 12 miles from the convention headquarters. The railroad and bus terminals are only a few blocks away. Limousine service, bus transit, and rent a car service are available at the airport.

\* \* \*

### *Hotel*

Our convention site is the Hilton Hotel, 930 Wilshire Blvd., Los Angeles, Calif. 90017, telephone (213) 629-4321 for reservations. (hotel reservation blanks will be printed in the Feb. issue of this publication). The Los Angeles Hilton is anything but convention. . . 1,200 lavish guest rooms and suites. . . 30 private meeting rooms on a single level. . . a host of specialty dining rooms and a coffee shop open 24 hours. There is a subterranean garage and adjacent parking for over 2,000 cars. . . heated swimming pool. . . sun terrace and health club. . . boutiques and shops.

\* \* \*

### *Hotel Accommodations*

The Hilton Hotel has over 1,200 air conditioned rooms with private bath and color television. We have booked 250 rooms. The hotel's rates are quite high because so many tourists come out here during the summer months and the cost of

## *Plan Now To Attend The 6th Biennial ILDA Convention in Beautiful, Exciting, Los Angeles, California July 9 - 12, 1981*

living is also higher here than in other cities. The room rates are \$50.00 for singles and \$65.00 for double/twin and \$15 each additional person. We would like to encourage the delegates to share with someone so that they will not have to spend so much for the rooms.

### *Theme*

Our theme for this year's convention will be "BE OPENED", (St. Mark 7:34).

\* \* \*

### *Region and Congregation Participation*

We will have drama and cultural competition. In cultural competition, entrants can submit 1. Needle Craft, 2. Handicraft, 3. Fine Arts including photography. Judging for the above will be based on three things: 1. Creativity; 2. Beauty; 3. Fits the theme, "BE OPENED". The drama competition or one act plays must be done by the congregation as a group. It must be a Bible Story. All prizes will be awarded at the banquet.

\* \* \*

### *Devotion and Free Time*

We will have a day free on Friday, July 10th, with a luncheon and a tour at the Pilgrim Lutheran Church of the Deaf, Pilgrim Tower, and Universal Movie Studio.

\* \* \*

### *Registration*

A registration form is printed on Page 7 of this issue.

\* \* \*

### *Program*

A tentative program schedule is also found on page 7 of this issue.

\* \* \*

### *Banner*

We will have Banner Competition. The banner must fit the theme: "BE OPENED" or it can be your church banner. For those who are planning to bring a banner to our convention, please bring its pole and stand (if possible). For those who cannot bring a pole and stand for their banner, please let us know in advance so that we can provide one for you.

\* \* \*

### *For More Information*

If you have any questions, please contact Rev. August Hauptman, 1233 So. Vermont Ave., L.A., CA. 90006 or telephone (213) 389-9940 (voice or TDD).

\* \* \*



## Pastor Corl Retires

(continued from page 1)

In 1976 Pastor Corl and his wife Altha moved to Wausau, WI, where he served as mission to the deaf for the North Wisconsin District from La Crosse to Green Bay, from Oshkosh to Laurium, Michigan, with several more cities between these points. This represented a portion of the field he had been serving from Madison.

The Corls intend to remain in Wausau at this time, where Pastor Corl will serve as a part time assistant as St. Mark's Lutheran Church, working in an area of special interest - ministry to Indian people.

+ + +

## NAD Receives \$1/2 Million Grant

-news from NAD  
National Ass'n.  
of the Deaf

Albert T. Pimentel, executive director of the National Association of the Deaf (NAD) announced today that the NAD has obtained a new grant. The grant, which is for more than half a million dollars, will help the NAD to establish a National Resource Center. The Center will help people to understand the following rules about Section 504 of the Rehabilitation Act of 1973.

"Section 504," Pimentel noted, "says that programs which get money from the Federal government must be open to disabled people. Many schools, agencies, and programs are working very hard to make their services open to people with disabilities. But often, they do not know or understand what needs to be done for deaf people.

"This grant," Pimentel continued, "means that the NAD will be able to help agencies identify and understand the needs of deaf people. We will be able to help them become aware of the problems deaf people have, and show them how these problems can be solved."

The grant has two parts: First, it will establish the National Resource Center. The Center will collect materials and information on Section 504 as it applies to deaf people. The Center will show schools, agencies and programs how their services can be opened to deaf people.

The second part of the grant is to train deaf people in local communities to serve as resource persons. These people, once they are trained, will work with groups in their area, showing them how programs can be made usable by deaf people.

"Deaf people are a disadvantaged group," Pimentel stated.

"Educational levels, educational attainment, and incomes of deaf people are lower than the national average. Communication problems cause many of these problems. Ironically, communication factors also prohibit deaf people from getting help from the social service systems.

"At present, many programs, such as schools, welfare offices and hospitals do not know how to serve deaf people. They do not have the expertise or the information they need to make their services useful to the deaf community.

"It is important that they learn that the communications problems they have with deaf people can be solved," Pimentel concluded. "TDDs, interpreters, simple language, job modifications, and other adjustments can build up good communication between deaf people and their communities."

Edward C. Carney has been appointed project director for the grant. To the largest extent possible, the NAD will fill the positions with qualified deaf individuals.

For more information, contact: Edward C. Carney, National Association of the Deaf, 814 Thayer Avenue, Silver Spring, Maryland 20910.

\* \* \*

## ABS asks churches to increase support

NEW YORK - The American Bible Society (ABS) has asked U.S. churches and denominations to increase their financial support by at least 10 percent each year to the worldwide work.

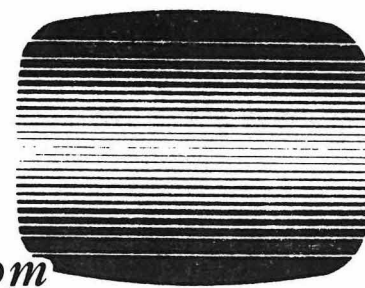
The call was among resolutions passed as the National Advisory Council of ABS, composed of society officials and denominational church leaders, met in December.

"We desperately need a stronger financial base for Scripture production in the Third World countries," said Charles Baas, ABS treasurer.

Demand for Scriptures is growing at a pace faster than the birth rate, according to Alice Ball, ABS general secretary. She said the Good News for New Reader programs (a graded approach to Scripture reading) was high on the agenda in developing countries.

"However we do need the financial resources to reach more than 80 million people who do not have at least one portion of the Scriptures in their own language," she added.

The council resolution urged all U.S. churches, denominations and agencies to become partners in the worldwide Bible cause and to give more generously in order "to provide every person with an opportunity to receive the Scriptures."



NEWS from

**Lutheran  
Television**

Sponsored by the

International Lutheran Laymen's League

## Tension Point Films Captioned for Hearing Impaired

-from Ronald J. Schlegel, Manager  
Public Relations

Tension Point, Lutheran Television's series of 18 ten to twelve minute open-ended films with accompanying discussion guides, has recently been produced on videotape in both closed caption and open caption versions for the deaf and hearing impaired. Production costs for the captioning were funded by a grant from Lutheran Friends of the Deaf.

The closed caption versions of the videotapes were produced for on-television usage. Closed captioning consists of using a line ordinarily not used on the television screen for captions. These captions are seen only by viewers whose television sets are equipped with a special device to make the captions visible. The viewer without that device will not see the captions -and they will therefore not disturb the hearing person's viewing of the program.

"We introduced our Tension Point films at the National Association of Television Producers and Executives convention last year," Ms. Jan Naji, manager of media marketing for the International Lutheran Laymen's League, said, "We're marketing the films to local stations individually, encouraging their use in local talk shows and discussion programs. We'll continue that marketing approach, but now with the added dimension of the programs being closed captioned."

The open caption versions of the Tension Point films were produced for use in deaf and hearing impaired congregations. In these videotapes, the captions appear visibly on an unused portion of the screen.

At the request of Lutheran Friends of the Deaf, the open caption videotapes were presented by Lutheran Television to Rev. Donald W. Zuhn, Secretary for Blind and Deaf Ministries for the Lutheran Church-Missouri Synod, for distribution to Lutheran congregations serving the deaf and hearing impaired.

(please turn to page 6)





## Truth Revealed

Zacharias Werner, a romantic poet turned priest and a former notorious transgressor, packed Vienna's church in 1809 with his fiery sermons on carnal sin.

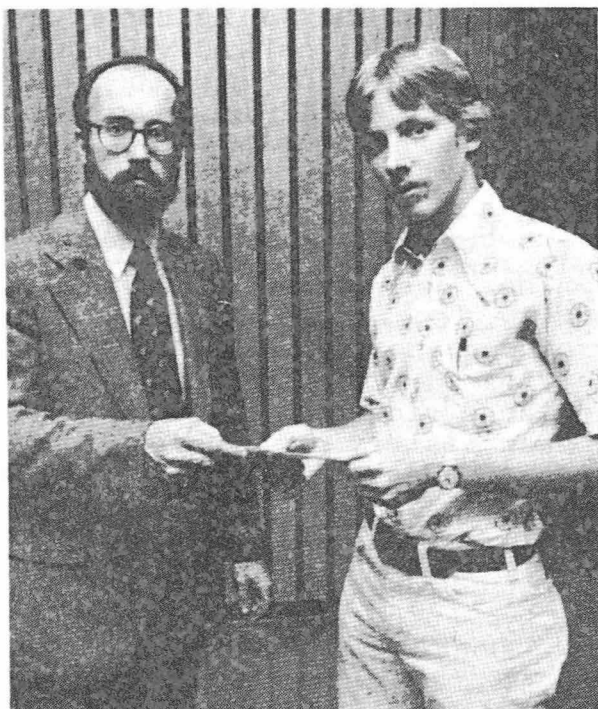
One Sunday, he preached to a huge congregation a sermon on "that tiny piece of flesh, the most dangerous appurtenance of a man's body."

Gentlemen blanched, Ladies blushed, as he elaborated on all the horrendous consequences of it's misuse, his piercing eyes shooting sparks as he expounded graphically on and on. Toward the end of his sermon, he leaned over the pulpit to scream at his listeners, "shall I name to you that tiny piece of flesh?" There was a paralyzed silence. Smelling salts were extracted from ladies purses. He leaned out further, and his voice raised to a hoarse shout, "shall I show you that tiny piece of flesh?"

Horrified silence, not a whisper or a rustle of a prayer could be heard. Werner's voice dropped, and a sly smile slid over his face. "Ladies and gentlemen, behold the source of our sins!" And he stuck out his tongue.

\* \* \* \*

## Photographer Wins Award For Deaf



John Head and Kim Hurdelbrink

(Story begins on the next column)

## Tension Point Films Captioned

(continued from page 5)

"We feel these videotapes will be very helpful to our deaf congregations," Rev. Zuhn said. "They will provide the opportunity for deaf people to see and discuss the situations pictured just as hearing people would do, and to apply the Word of God to those situations."



"We are also developing a rental and sales system for distribution of open caption videotapes to congregations of other denominations which serve the deaf and hearing impaired," Niji said.

In the photo above Jack Daniels (left), executive director of the International LLL presents open caption versions of Lutheran Television's **Tension Point** series to Rev. Donald Zuhn, secretary for Blind and Deaf Ministries for the Lutheran Church - Missouri Synod. Also present were Ms. Jan Niji, manager of media marketing for the International LLL, and William Dingler, International LLL director of media services.

+ + + + +

**SEBEWAING** - **Kem Hurdelbrink**, a professional photography major in the College of Graphic Arts and Photography at Rochester Institute of Technology, has received the Cross-Registered Student Scholarship Incentive Award through one of RIT's colleges, the National Technical Institute for the Deaf (NTID). Hurdelbrink, a deaf student, is cross-registered through NTID into the College of Graphic Arts and Photography.

Hurdelbrink, the son of Mr. & Mrs. Willis Hurdelbrink of Sebewaing, was presented the award by John Head, staff chairperson of RIT's College of Graphic Arts and Photography Support Services Program.

This award recognizes Hurdelbrink's excellent academic work in the past year. A 1977 graduate of Unionville-Sebewaing Area School in Unionville, he has earned a 3.79 grade point average on a 4.0 grade point system in the RIT's professional photography program. Earlier he attended Lutheran School for the Deaf in Detroit.

Recently Hurdelbrink received a Certificate of Achievement from Dr. Milo Bishop, dean of NTID for his special achievement of attaining a 4.0 grade point average for 13 credit hours during the spring academic quarter.

Hurdelbrink joins 3 other deaf students in receiving his year's Cross-Registered Student Scholarship Incentive Awards.

NTID at RIT is the world's largest technical college for the deaf. Created by Congress and funded by the U.S. Department of Education, it represents the first effort to educate large numbers of deaf students within a college campus planned primarily for hearing students.



"CHEER UP, REVEREND. WE'LL HAVE YOU UP AND BACK ON YOUR KNEES IN NO TIME."

\* \* \* \*

The Internal Revenue Service now allows a medical deduction for the cost of a TeleCaption adapter, or the incremental cost of the adapter built into Sears' color TV set. Just in time for this year's tax returns!

\* \* \* \*

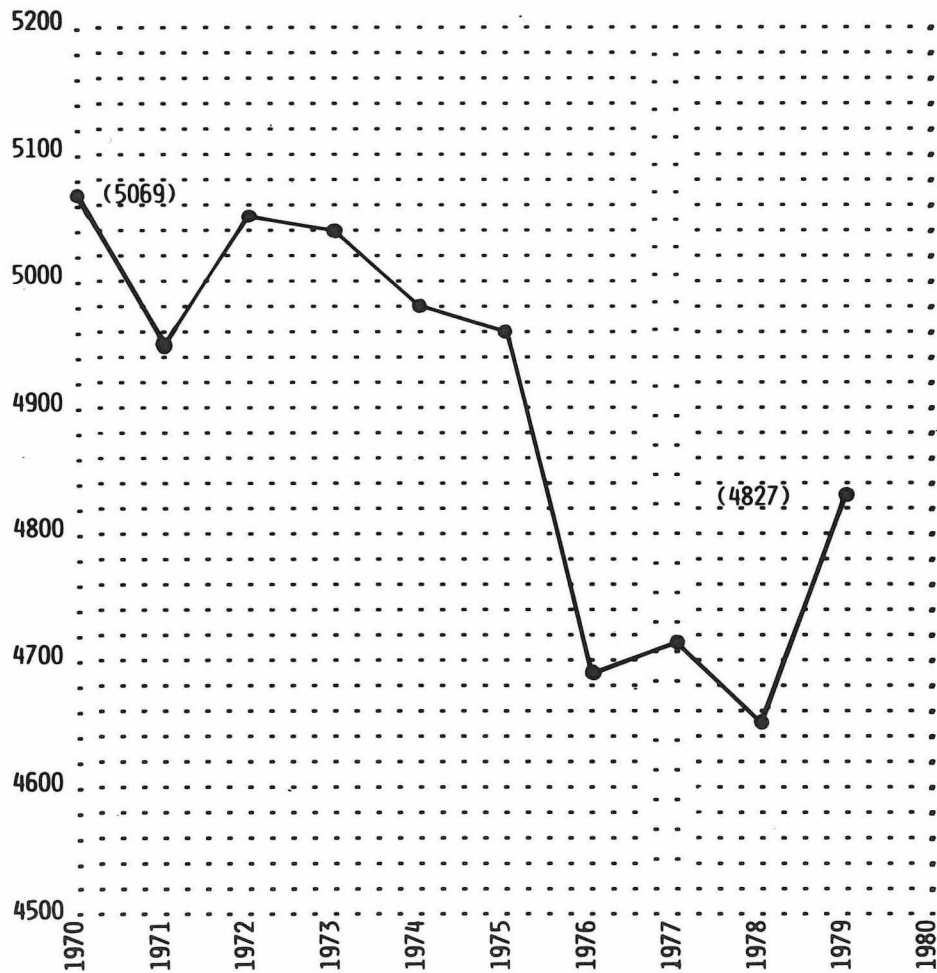
**EPIPHANY** means to "appear" or "show". On January 6th, the church enters a time of the church year called **EPIPHANY**. It is the time of the year when we remember how the star "showed" the wise men how to find Jesus. We also remember the meaning of Jesus and how, at Jesus' Baptism God announced to the people that Jesus truly is His Son. Let us join the wise men from the East, and worship Jesus this Epiphany season.

\* \* \* \*

**Aurora, IL. . . Lutheran Deaf Mission BETH FRIEDRICH** was born on **NEW YEAR'S EVE**, December 31, 1980 at 6:30 p.m. weighting in at 7lbs; measuring 20 inches. Proud parents are Rev. & Mrs. Ronald Friedrich.



**CONFIRMED MEMBERS... CHURCHES OF THE DEAF  
LUTHERAN CHURCH - MISSOURI SYNOD**



**1981 ILDA Convention  
Registration Form**

NAME: \_\_\_\_\_

ADDRESS: \_\_\_\_\_

CITY: \_\_\_\_\_ STATE: \_\_\_\_\_ ZIP: \_\_\_\_\_

ADULTS \_\_\_\_\_ CHILDREN \_\_\_\_\_

ARE YOU A MEMBER OF ILDA? YES \_\_\_\_\_ NO \_\_\_\_\_

WHERE WILL YOU BE STAYING? HILTON \_\_\_\_\_

OTHER ARRANGEMENTS \_\_\_\_\_

REGISTRATION	How Many	Amount
(18 yrs. or older)		
Member	\$4.50	_____
Non-Member	5.50	_____
Opening Buffet - -	\$12.00	_____
Tour and Luncheon-	12.00	_____
Banquet - - - - -	18.00	_____
TOTAL - - - - -		_____

Total for all events - \$46.50 for ILDA members

47.50 for non-members

Save \$2.00 - - - - - 44.50 for ILDA members

(combination Ticket) 45.50 for non-members

SEND ONLY CERTIFIED CHECKS OR MONEY ORDERS PAYABLE TO: 1981 ILDA CONVENTION COMMITTEE.

WE ABSOLUTELY CANNOT BE RESPONSIBLE FOR CASH THAT IS SENT IN THE MAIL.

Total amount enclosed \_\_\_\_\_

Mail this form to:

ILDA CONVENTION COMMITTEE  
c/o Pilgrim Lutheran Church  
1233 So. Vermont Avenue  
Los Angeles, California 90006

**1981 ILDA Convention  
Los Angeles  
Tentative Program Schedule**

Thurs., July 9th  
1:00 P.M....Registration..... Lobby  
5:00 P.M....Opening Buffet.....Garden Room  
7:30 P.M....Opening Worship  
Service.....Golden State Rm.  
Keynote Speaker  
Convention Orientation

Friday, July 10th  
....Registration  
(Continues all day)..... Lobby  
8:30 A.M....Opening Devotion.....Golden State Rm.  
9:30 A.M....Tours - Universal Studio  
(including lunch)  
Pilgrim Lutheran Church  
of the Deaf  
Pilgrim Tower  
7:00 P.M....Drama Competition....Golden State Rm.  
8:30 P.M....1st Business Session....." " .....  
10:00 P.M....Closing Devotion

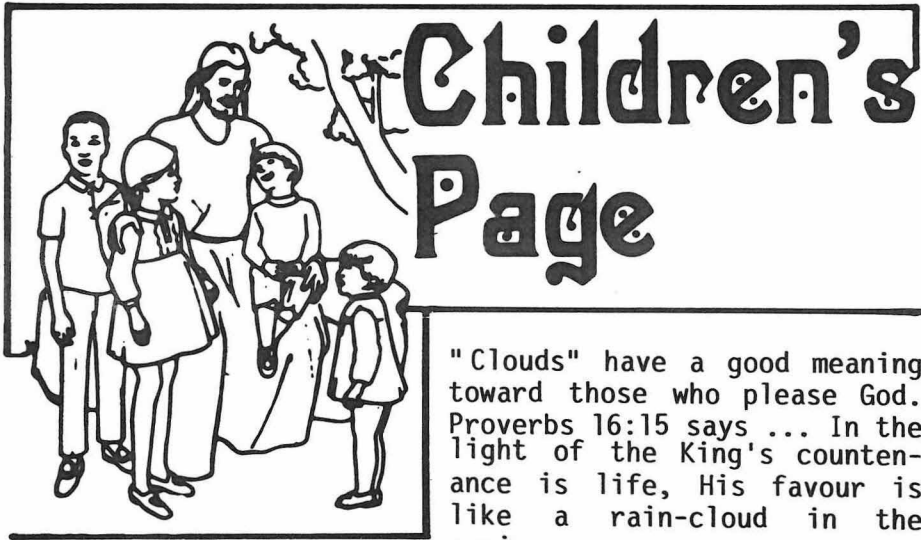
Sat., July 11th  
....Registration  
(continues all day)..... Lobby  
8:30 A.M....Opening Devotion..... Golden State Rm.  
9:00 A.M....2nd Business Session... " " "  
10:15 A.M....Coffee Break.....Lobby  
10:45 A.M....3rd Business Session..Golden State Rm.  
12:00 P.M....Lunch  
1:30 P.M....4th Business Session..Golden State Rm.  
3:00 P.M....Coffee Break.....Lobby  
3:30 P.M....5th Business Session..Golden State Rm.  
5:00 P.M....Meeting Adjourned  
7:00 P.M....Banquet.....Pacific Ballroom  
Guest Speaker  
Awards  
Entertainment

Sun., July 12th  
9:00 A.M....Bible Class.....?  
10:00 A.M....Bible Class Adjourned  
10:30 A.M....Worship Service.....Golden State Rm.  
12:00 P.M....Convention Adjourned  
12:30 P.M....Presidential Luncheon.....Dallas Rm.  
(Newly elected officers only)

**CULTURAL COMPETITION AND DISPLAY  
WILL BE HELD AT THE ST. LOUIS ROOM  
AND FOY ROOM (ALL DAY THURS.,  
FRI., AND SAT.)**

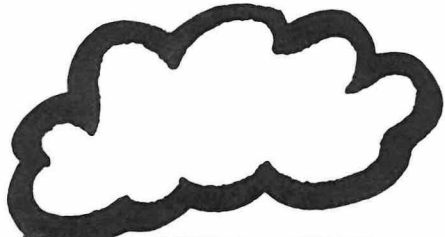


**DECKSIDE DINING** in beautiful Marina del Rey. Just minutes from the heart of downtown Los Angeles. Marina del Rey offers a wide variety of exciting restaurants, night clubs and attractions. Restaurant menus vary from Mexican to Polynesian. The nearby Fisherman's Village offers a unique shopping experience in a delightful Cape Cod setting. These diners enjoy the company and view from the famous Warehouse Restaurant.



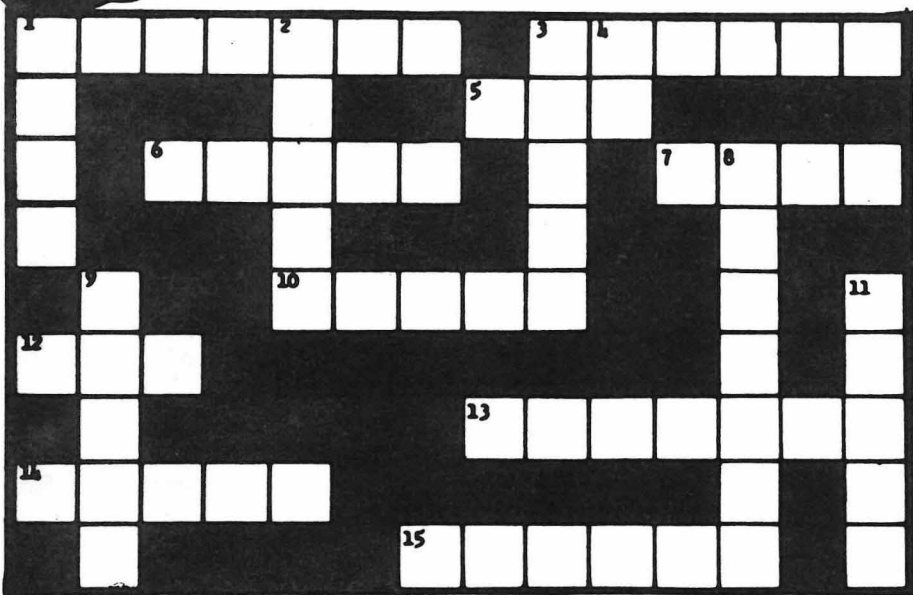
# Children's Page

"Clouds" have a good meaning toward those who please God. Proverbs 16:15 says ... In the light of the King's countenance is life, His favour is like a rain-cloud in the spring.



## Bible Clouds

By Barbara Andrews



**ACROSS:**

1. A cloud "filled the house of the Lord" that built. 1 Kings 8:10
3. She became leprous when the cloud departed from the tabernacle. Numbers 12:10
5. A voice from a cloud said: "This is My beloved \_\_\_\_." Matthew 17:5
6. He was taken up in a cloud. Acts 1:9
7. "A cloud covered the \_\_\_\_ of the congregation." Exodus 40:34
10. Isaiah said: "Behold, the Lord rideth upon a \_\_\_\_ cloud." Isaiah 19:1
12. God's \_\_\_\_ in the clouds was a covenant with earth. Genesis 9:13
13. The psalmist sang that the Lord "maketh the clouds His \_\_\_\_." Psalm 104:3
14. God told Moses that He would appear "in the cloud upon the \_\_\_\_ seat." Leviticus 16:2
15. This man saw, in a vision, "with clouds of heaven there came one like a Son of Man." Daniel 7:13

**DOWN:**

1. "I have blotted out, as a thick cloud, . . . thy \_\_\_\_." Isaiah 44:22 (King James Version)
2. God spoke to this man from a thick cloud. Exodus 19:9
3. A cloud covered the \_\_\_\_ when Moses was there. Exodus 24:15 (King James Version)
4. The Lord led His people by day \_\_\_\_ a cloud pillar. Exodus 13:21
8. This prophet saw ". . . a great cloud" and in it "four living creatures." Ezekiel 1:4-6.
9. The Son of Man will come "in a cloud with \_\_\_\_ and great glory." Luke 21:27
11. \_\_\_\_ Deborah sang of clouds dropping \_\_\_\_\_. Judges 5:4.

## A Strange Church

Do you think this church looks strange? Why? How is this church different from yours? It is a very old church. It was built over 800 years ago in the land of Norway. Followers of the Lord, Jesus, built this odd church at the time they came to Norway to tell the people about the true God and His Son, Jesus.



It might seem strange to see wooden dragon heads on a church today, but when this church was built, the wood carvers of Norway liked to make such dragon heads. Many of their warships had dragon heads carved on their bows.

What is strange about this church?

The dragon heads on their church helped the people remember how they lived before they learned about Jesus. The dragon heads also showed the people that they could use their talent to carve wood to serve Jesus and His church.

\* \* \* \*



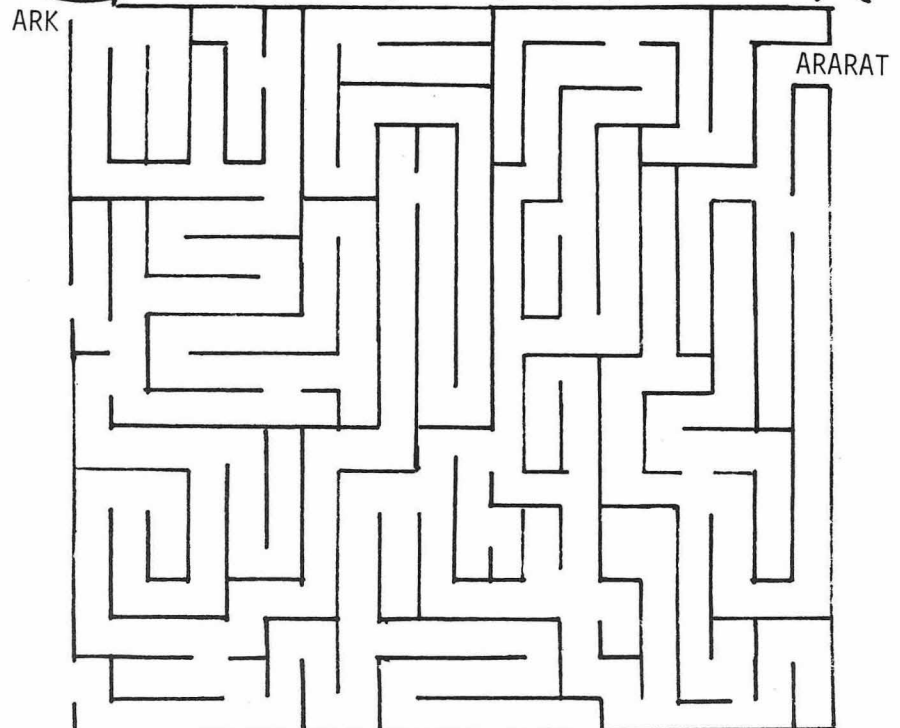
## JESUS IS LIKE...

Do you know that Jesus often used the comparisons to help His hearers better understand God and His word? How many of the following comparisons do you know? Look up the Bible passages to check your answers.

- Jesus is like a kind \_\_\_\_\_ (Psalm 23:1)
- God is a kind \_\_\_\_\_ (Matthew 5:45)
- The kingdom of God is like a mustard \_\_\_\_\_ (Matthew 13:31)
- God is my \_\_\_\_\_ (Psalm 31:3)

\* \* \* \*

## Sail The Ark Safely to Mt. Ararat



\* \* \* \*