



The DEAF LUTHERAN



Official Publication of the International Lutheran Deaf Association & the Board for Missions of the Lutheran Church-Missouri Synod

March, 1981

ST. LOUIS, MISSOURI

Volume 73, No.3

"God blesses me richly," says blind-deaf Lutheran



LENORA CULPER, who is both deaf and blind, smiles as Rev. Marlow Olson explains at the banquet that followed the Lutheran Hour's 50th Year Service in Cleveland, Ohio. (see Feb. 1981 issue *D. L.*, page 5.) Lenora is a member and he is the pastor at Christ Deaf Lutheran Church.

The following letter was written by Miss Culper, who is both deaf and blind, to share her thoughts and life with those attending the workshop on ministries with the disabled, part of a recent ALC District meeting here. Miss Culper is black and lives alone in a Cleveland Metropolitan Housing apartment.

A communicant member of Christ Church for the Deaf, LCMS, she recently became engrossed in reading a Braille copy of a study of the dual

nature of Christ, written by Dr. J.A.O. Preus.

She keeps up with current events by regularly reading the *New York Times* Braille version. Miss Culper is 'exceptionally intelligent', says her minister who communicates with her through hand-tapping the alphabet.

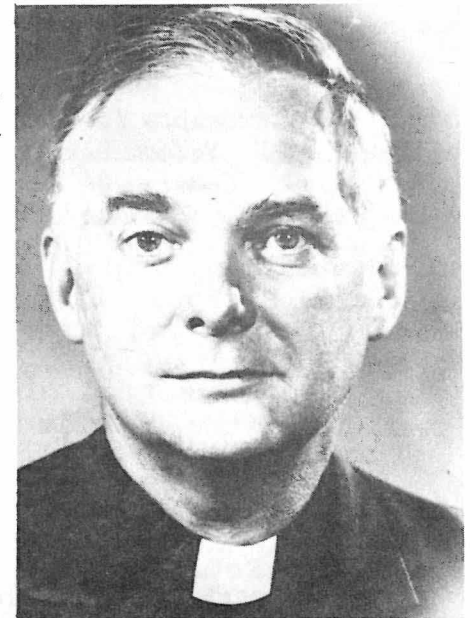
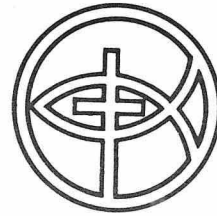
One of several deaf-blind Cleveland area residents, Miss Culper enjoys discussing religion and current events but this obviously is limited to those few people with whom she can communicate by hand-tapping.

She likes plants that have an interesting texture and a pleasant smell. She stresses that there are more similarities than differences between disabled and non-disabled. Self-pity is not part of the nature of this remarkable lady. She writes:

"I have always regarded myself as just a plain home body, but I wish to say that whatever our handicaps are,

Pastor Kraus Speaks at Seminary

-from Concordia Theological Seminary Fort Wayne, Indiana



Rev. George Kraus

Rev. George R. Kraus will speak at Concordia Theological Seminary on Friday, April 3, at Kramer Chapel (9:50 in the morning) and then at 10:45 a.m. in the north classroom building, room 201, on "Ministering to the Deaf." Rev. Kraus will also be the keynote speaker on Saturday, April 4th, at the 1981 Central Regional Conference of the International Lutheran Deaf Association banquet. The Central Regional Conference is meeting at the Harley Hotel and the banquet starts at 7:00 p.m.

Rev. Kraus, a native of Plainfield, New Jersey, has worked with the deaf for more than thirty years. He has served churches for the deaf in New York City, St. Paul-Minneapolis, Minnesota, and St. Louis, Missouri. While in St. Louis, he taught Sign Language at Concordia Seminary. He has also served as chaplain of Mill Neck School for the Deaf, New York. In Maine, he served as Coordinator of Religious Instruction at the Maine State School for the Deaf.

Presently, Rev. Kraus is president of the Lutheran Friends of the Deaf and the Mill Neck Foundation. The Foundation is working on the publication of a Brazilian Sign Language Manual to aid The Lutheran Church-Missouri Synod's sister synod in Brazil in their work with deaf children and adults.

For more information on the above, contact Rev. George Perry, 484-5867 or at Concordia Theological Seminary, 482-9611, ext. 300.

+ + + + +
we must accept them as challenges to achieve whatever goals we want.

We should use them as stepping stones to reasonably normal and successful living.

When each one of us gets up and goes after what he or she wants and does not give up the fight, we prove what we are made of - steel or clay.

Whatever the handicap be, I know it is not easy to bear.

I have been blind and deaf since the age of six years so I never had the chance of entering a public school. I was never what is called a mute and I have always gotten along very well with people who see and hear

(please turn to page 5)

International Year of Disabled



YEAR OF THE DISABLED—This is the symbol for the 1981 International Year of the Disabled. Churches, agencies, and governments are participating in programs which recognize contributions of the disabled and which will remove physical and social barriers that limit participation by disabled persons.

—excerpts from an article by Marshall R. Nelson, executive sec'y. Commission on Services to The Mentally Retarded.

The International Year of Disabled Persons (IYDP) involves many nations and many international organizations. It's emphasis is promotion of the betterment of the disabled.

The Lutheran Church—Missouri Synod is involved through its Commission on Services to the Mentally Retarded and in conjunction with three other major Lutheran bodies has issued a mailing to 19,000 parishes.

Some goals for the disabled are: to look at contributions of the disabled; to act upon attitudinal and physical barriers; to find permanent jobs for the disabled; to provide for adequate transportation; to support significant legislation; and to lift up educational opportunities.

At least one person in ten in any country is afflicted by some kind of disablement and among principal causes of disability world-wide are:

- * Accidents, particularly home accidents, totaling at least 20 million a year with 110,000 persons being left with permanent disabilities.
- * Road accidents leave more than 10 million injured yearly, often with consequences that include amputations, brain injuries, paraplegia, and quadriplegia.
- * Crippling diseases are still wide-spread. Twenty million people have leprosy, for instance. Malnutrition-linked disabilities are common in developing countries. For example, an estimated 250,000 children go blind each year because of chronic vitamin deficiencies.
- * Mental illness, according to the World Health Organization effects one in 10 persons at some stage in their lifetime. Mental patients occupy a fourth of all hospital beds.
- * Blindness affects some 10 to 15 million people worldwide.

- * Hearing impairments affect 70 million persons worldwide.
- * Disablements from wars continue to rise.
- * Diseases leave many with disabilities, including 15 million with cerebral palsy and 15 million epileptics.

The problem is a growing one. World population is growing but food production barely keeps pace.

In recent years many congregations have developed ways of effectively ministering to the disabled and their families.

The Commission on Services to the Mentally Retarded is very interested in hearing from congregations and individuals as to the needs encountered and how the Commission might assist. This assistance might be in the form of new materials for classes, informational materials, advocacy programs, workshops, tools to meet specific needs.

* * *
Addresses of state IYDP coordinators may be obtained from the Commission on Services to the Mentally Retarded, The Lutheran Church—Missouri Synod, 500 North Broadway, St. Louis MO 63102. International information is available from the Information Office (IYDP) DPI/DESI, United Nations, New York NY 10017.
* * *

LENT: Time to give up or...

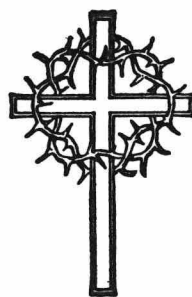
—from The LONE STAR newsletter
Austin, Texas
Pastor Richard Reinap

What will you give up for Lent this year? Maybe you have never given up anything for Lent, but certainly someone has asked you that question.

The idea of giving up something during Lent has a pious (holy) Christian background. The New Testament calls Christians people who are sacrificed (completely given to) to their Lord; their lives are completely and willingly dedicated to serving God. As a sign of God's rule over them, many Christians gave up something they liked during Lent, and they often will spend additional time in prayer and in studying God's Word. Some Christians gave up foolish things that had little meaning, and other Christians never bothered to give up anything.

It might be well for Christians to change their thinking a little. Perhaps our call should be, "What will you take up this Lent?" instead of, "What will you give up?"

(please turn to page 3)



The DEAF LUTHERAN

March, 1981; Vol. 73, No. 3

(ISSN 0164-3673)

OFFICIAL PUBLICATION OF THE INTERNATIONAL LUTHERAN DEAF ASSOCIATION AND THE BOARD FOR MISSIONS OF THE LUTHERAN CHURCH—MISSOURI SYNOD. PUBLISHED MONTHLY BY CONCORDIA PUBLISHING HOUSE, 3558 SO. JEFFERSON AVE., ST. LOUIS, MO. 63118. SUBSCRIPTION FEE IS \$3.50 PER YEAR. SECOND-CLASS POSTAGE PAID AT ST. LOUIS, MISSOURI.

POSTMASTER: SEND ADDRESS CHANGES TO:

THE DEAF LUTHERAN, c/o ELMER D. FRANCISCO
6861 EAST NEVADA, DETROIT, MI 48234

THE DEAF LUTHERAN GOES TO PRESS ON THE 15th OF THE MONTH, TWO WEEKS BEFORE ISSUE... SEND ALL PICTURES, NEWS, STORIES, AND ARTICLES AT LEAST ONE MONTH BEFORE THE NEXT ISSUE TO THE EDITOR:

THE DEAF LUTHERAN
ARCHIE D. MARSHALL, EDITOR
3743 PALM STREET
ST. LOUIS, MISSOURI 63107

FOR NEW SUBSCRIPTIONS

CUT OUT AND FILL IN THIS COUPON. ENCLOSE YOUR CHECK OR MONEY ORDER OF \$3.50 FOR A ONE YEAR'S SUBSCRIPTION AND MAIL TO:

ELMER D. FRANCISCO
BUSINESS MANAGER:
THE DEAF LUTHERAN
6861 EAST NEVADA
DETROIT, MI 48234

NAME _____
ADDRESS _____
CITY _____
STATE _____ ZIP _____

Thank You For Your Subscription

FOR CHANGE OF ADDRESS

FILL IN THIS CLIPPING WHICH HAS YOUR OLD ADDRESS ON THE REVERSE SIDE. SEND TO:

ELMER D. FRANCISCO,
BUSINESS MANAGER
6861 EAST NEVADA
DETROIT, MI 48234

***** NEW ADDRESS *****

NAME _____
ADDRESS _____
CITY _____
STATE _____ ZIP _____

God's 1,000 Club

This Club is open to any person who wish to help with the operating expenses of the ILDA Board of Directors. Annual dues is \$10 per person. Details about this club will be sent on request. Please make your check or money order payable to:

ILDA Treas. Elmer Francisco
6861 East Nevada
Detroit, MI 48234

NAME _____
ADDRESS _____
CITY _____
STATE _____ ZIP _____

Thank You for Your Contribution!



LENT: Time to give up or...

(continued from page 2)

It seems fair to suggest that Christians, being dedicated and sacrificed, should be ready to take up whatever will strengthen their faith and increase their impact (witness) on the world!

This Lent, we encourage you to "take up" something. Maybe you will take up Bible study or praying for missionaries and the work of the church in foreign lands. You might take up praying for Christian social workers who show the same interest our Lord had for people's needs. Or perhaps during Lent you will find a new way to serve your church or community.

Whatever you do, take Lent seriously. And then think about taking up something.

-Concordia Tract Mission

(Suggestions For Pastors)

*-by Rich Bimler
from REPORTER*

**10 Ways
To Better Know
Our Youth**

- Talk to teenagers regularly—invite them over; teach a Bible class; share a meal.
- Visit your local high schools and schools for the deaf if you have a congregation of deaf members. have lunch, talk, be there
- Take young people with you on hospital calls and shut-in visits.
- Check the attitude of other adults; invite them to be involved with youth.
- Involve youth in the total life of the parish as part of the planning, doing and reviewing.
- Visit places in your community where youth go - just watch and listen.
- Don't stereotype youth; they are people not problems. See them as individuals.
- Find the strengths in each of your confirmands. Encourage and support them. Find their strong points.
- Spend a weekend with youth—as a participant - not only as a leader. Be yourself and enjoy each other.
- If youth are not your favorite age group, admit it, and help to involve others in the ministry to and with youth.

And one free idea: Pray with and for young people. Celebrate life with them.

Rich Bimler is executive secretary of the Synod's Board of Youth Ministry.

**Don't
"Turn Your Head"**

*-from CHRISTIAN DEAF CENTRE newsletter
Calgary, Alberta, Canada
Pastor Harold J. Ziprick*

Read John 1:10:11

The deaf husband and wife were angry with each other. I saw the arguing. Their hands talked in powerful, quick movements. Their faces showed anger even to the person who did not know sign language.

Finally, the wife simply turned her head away from her husband. He signed angrily. But she would not look at him. He walked to her front, but she turned away. He could not communicate with her because she would not give her attention to him. Then he gave up, walked out of the house, and slammed the door. She did not hear the door slam, but she felt it. Now, they are divorced.

God wants to talk to you. Do you give Him your attention, or do you "turn your head?" The way you "turn your head" is to refuse to read the Bible, and refuse to go to church. Someday the door will "slam" -- you will die. Then it will be too late. Give your attention to God now. And as we are approaching the Easter Season it is a good time to turn our attention to the Lord Jesus Christ who loves us and gave His life so that we could be made right with God the Father.

Jesus said, "Many, many times I wanted to help you and all people. I wanted to gather you and all people together, like a hen gathers her chicks under her wings. But you would not let me." Matthew 23:27b.

*-adapted from
Daily Devotions for the Deaf*



Lucky or Unlucky?

*-from THE OPEN DOOR newsletter
Peoria-Bloomington-Normal, Illinois
Pastor Larry Larsen*

March is green month -- in honor of St. Patrick's Day. But like so many holidays, its true meaning has been lost or confused and almost forgotten. To most of us, St. Patrick's Day has become a time for wearing green, parties and clovers. We think of the Irish, and St. Patrick's greeting cards talk of the "luck of the Irish." Four leaf clovers are a sign of "good luck." It is "lucky" to wear green on Mar. 17th.

But all of the ideas of "good luck" are superstition and are the very opposite of God's ways. No four leaf clover or green anything in this world can bring us good luck -- because there is no such thing as "good luck." Likewise, forgetting to wear green or walking under ladders or black cats cannot bring us bad luck, because there is no such thing as "bad luck."

A Christian knows that every detail of life does not depend on "luck," but instead depends on God. If we find a twenty dollar bill on the street, it does not mean good luck that caused it to happen. It was God. If we have not had a cold this winter, it was not because of luck -- it is because of God. If tomorrow we have a flat tire, get caught in a rain storm, and break our favorite lamp, it is not "bad luck." Even in those things God is in control. God allows it to happen to us, because He knew we needed it -- perhaps to test our faith.

St. Patrick lived in the 400s. He was born in Britain and taken to Ireland as a slave. Later he escaped and went home. He studied, was ordained, became a bishop and went back to Ireland, preaching the good news of Jesus and establishing churches.

We can honor St. Patrick, by believing and depending on our Lord for every activity in our life, by loving and worshipping our Lord Jesus Christ and sharing the good news of him with others, as did St. Patrick.

So next time you have a good day and many things seem to go well for you, don't tell your friends you had good luck. Tell them you have a good God. And when things go wrong, don't tell your friends you had bad luck. Tell them you have a good God who loves you so much that he allowed frustrating and difficult times in your life to teach you to depend 100% on Him.

Luck is something we can not depend on! God is someone we must depend on. Green is the color of life. May the green you wear on St. Patrick's Day remind you of the life which through the Life of Jesus:



NEW YORK ... Mark M. Blesch, an NTID student from California, was part of the Rochester Institute of Technology's running team which set a new transcontinental record (14 days, 12 hours, 8 minutes). Their run broke the previous coast-to-coast record and earned a place in the Guinness Book of Records, "Crossing the country on foot was a chance of a lifetime," said deaf runner Blesch. "The coach told us we could do it, and we did."

* * * *

YOU NEVER WALK ALONE

You never walk alone, my friend,
Though you may think you do,
For in your sorrow and despair
God always walks with you.
There is no hour, no passing day
He is not by your side;
And though unseen He still is there
to be your friend and guide,
So, when you think you walk
alone, reach out and you will find
The Hand of God to show the way
and bring you peace of mind.

Harold F. Mohn

* * * *

Christians for too long have been in a rut, and the only difference between a rut and the grave is the degree of depth!

--Tillie Magnotti

* * * *

The great task of the Church is to get sinners into heaven and saints out of bed! Think about it!

--The Bible Friend 10/78

* * * *

TELECATION NEWS

The Internal Revenue Service now allows a medical deduction for the cost of a TeleCaption adapter, or the cost of the adapter built into Sears' color TV set. Just in time for this year's tax returns!

AMERICANS MUST LEARN TO INVEST, NOT SPEND THEIR TIME.

--Walter A. Maier

* * * *

EUGENE, OR ... Gathering under the theme "Walking and Leaping and Praising God," 430 Missouri Synod Youth met Feb. 27-28 and March 1 at Grace Lutheran Church of this city.

Attended by young people from Oregon and southern Washington, the gathering has become an annual event sponsored by the Oregon State Youth Board of the Northwest District.

In addition to conducting business of Lutheran Youth Fellowship, the Synod's youth organization, the young people participated in community building, worship, and Bible studies.

Among the groups in attendance was the "Flying Fingers LYF," a group of 14 deaf young people and counselors from Hope Lutheran Church of the Deaf in Portland. (Rev. Shirrel Petzoldt, pastor). The group participated through assistance of a sign language interpreter and led the gathering in the closing worship Saturday night, teaching signs for songs.

The \$403 offering from the Sunday worship was designated to "Flying Fingers" for scholarships, an interpreter and other projects.

+ + + + +

NEW YORK ... A new 25-minute videotape program that shows police officers how to deal with deaf people is now available to all police departments. The Silent Siren, and its accompanying 12-page booklet, are available at cost from the Media Services Dept., National Technical Institute for the Deaf, RIT, One Lomb Memorial Dr., Rochester, NY 14623.

* * * *



ping areas and major hotels.

The picture on the right shows a shoppers paradise at Farmers Market. This world famous shopping emporium is a veritable shopping potpourri of domestic and imported goods. L.A.'s Farmers Market also features a delectable assortment of restaurants.

LOS ANGELES - Supercity and trendsetter of the nation. Financial, business and cultural center of the West. In between business meetings and on your free time, here are just a few ideas how you and your family can enjoy yourselves.

- * Unwind at the beach. Just five miles away.
- * Catch a concert at Hollywood Bowl.
- * Explore the Farmers' Market
- * Follow a map to the stars' homes.
- * Tour Universal Studios.
- * Visit Disneyland.

ON GIVING

"Go, give to the needy, sweet charity's breed ... For giving is living," the angel said.

"Must I keep giving -again and again?" My answer ran.

"Oh no!" said the angel, piercing me through. "Just give till the Master stops giving to you."

* * * *

GOOD HEALTH HABITS TO LIVE BY:

1. Regular exercise
2. Daily breakfast
3. Normal weight
4. No smoking
5. Only moderate drinking
6. Seven-to-eight hours of sleep
7. Regular meal-taking

Evidence suggests that people who adhere to all seven good habits live to serve God many years longer.

* * * *

**1981 ILDA Convention
Los Angeles**

ATTRACTIONS GALORE!

Downtown Transportation: Visitors to downtown Los Angeles find the brightly stripped mini bus an easy mode of transportation. One of those beautiful and comfortable busses is shown in the picture on the left. Running every 5 minutes from designated points, the 15¢-a-ride bus makes stops at major points of interest in the downtown area including Olvera Street, Little Tokyo, Chinatown, shop-



We Want YOU in the ILDA today!
Rejoice with us in Christ's love...Join Today

ILDA Membership Application

Fill in your name and address on the spaces below. Use as many names and addresses as desired. Clip and mail to: Mr. Elmer D. Francisco, 6861 E. Nevada, Detroit, Michigan 48234. Make checks or money orders payable to: ILDA Treasurer Elmer D. Francisco. **DO NOT SEND CASH!** Membership fee is \$2 per year per person.

		Type		
		(Check One)		
1.. Active	2.. Associate	3.. Sustaining	<input type="checkbox"/>	<input type="checkbox"/>
NAME	Address	<input type="checkbox"/>	<input type="checkbox"/>	<input type="checkbox"/>
City	State	Zip	<input type="checkbox"/>	<input type="checkbox"/>
NAME	Address	<input type="checkbox"/>	<input type="checkbox"/>	<input type="checkbox"/>
City	State	Zip	<input type="checkbox"/>	<input type="checkbox"/>
NAME	Address	<input type="checkbox"/>	<input type="checkbox"/>	<input type="checkbox"/>
City	State	Zip	<input type="checkbox"/>	<input type="checkbox"/>

(Please type or print clearly)

DEAF - BLIND LUTHERAN TESTIFIES ON GOD'S BLESSINGS

(continued from page 1)

but who know how to communicate with a deaf-blind person.

In spite of my double handicap and trials, I can and do say, by the grace of God, my life has been happy. I am by nature and choice a homemaker and I enjoy living alone and doing my housework and cooking.

God blesses me richly with many true Christian friends who go out of their way to see my personal needs are taken care of. My hobbies are Braille reading and taking care of my house plants, also collecting shells and rocks.

As I reflect upon what God has done for me, a passage of the book of Isaiah often comes to mind: 'I will lead the blind in paths they have not known. I will make darkness light unto them. Yea, I will not forget nor forsake them; said the Lord of Hosts.'

Sincerely,
Miss Lenora Culper.

-from The Cleveland Lutheran Messenger +
photo by Florence Rowe, editor +

CONVOCATION ON DEAF MINISTRY



-from EYES THAT HEAR
Rev. Donald Zuhn

A special Convocation on Deaf Ministry is being planned for the fall of this year. It will be held at the Yahara Center, Madison, Wisconsin on November 20, 21, and 22, Friday through Sunday. The Project Director of this Convocation is Rev. Robert M. Corl, of Wausau, Wisconsin. Rev. Martin Kosche of Madison, Wisconsin is working with Pastor Corl and has sent out letters to all members of Ephphatha Conference last Oct. 22 and Dec. 26.

The purpose of this convocation is --

1. To take a good look at where we are at in Deaf Ministry.
2. To identify the needs of the total person who is hearing impaired for ministry by the church,
3. To set goals and priorities for our Deaf Ministry for the 80's and beyond.

A large number of people will be involved - deaf Lutherans, pastors, and other church workers in Deaf Ministry, other professions related to deaf people, church mission leaders, etc. A special grant is being sought to provide most of the funding for this convocation.

Persons we are interested in getting involved in this convocation are:

- Capable and understanding deaf members, church officers, Sunday School teachers, deaf or hearing.
- Persons involved in choir, sign singing.
- Interested hearing parents of deaf. Could be a brother or sister or near relative or even a friend.
- People in government services to the deaf.
- People in public education to the deaf.
- People involved in ministry to the deaf of other denominations.
- Any person with a wide view of deaf ministry's many aspects.
- Deaf of various occupational and educational status.
- Rehabilitation counsellors.
- Lay interpreters and trainers of interpreters, and any other persons in your area who could be helpful participants in the convocation.

The last meeting of this Convocation Committee was held in St. Louis, Mo. March 12 and 13th. More news on developments will be printed in this publication as soon as received.

Your cooperation is much needed and appreciated. If you would like to take part in this convocation or want to recommend someone, write to:

Rev. Robert M. Corl
Project Director
Convocation on Deaf Ministry
924 Lake View Drive
Wausau, Wisconsin 54401

6th Biennial ILDA Convention Los Angeles, California July 9 - 12, 1981

1981 ILDA Convention Registration Form

NAME: _____

ADDRESS: _____

CITY: _____ STATE: _____ ZIP: _____

ADULTS _____ CHILDREN _____

ARE YOU A MEMBER OF ILDA? YES _____ NO _____

WHERE WILL YOU BE STAYING? HILTON _____

OTHER ARRANGEMENTS _____

REGISTRATION	How Many	Amount
(18 yrs. or older)		
Member	\$4.50	_____
Non-Member	5.50	_____
Opening Buffet - -	\$12.00	_____
Tour and Luncheon-	12.00	_____
Banquet - - - - -	18.00	_____
TOTAL - - - - -		_____

Total for all events - \$46.50 for ILDA members
47.50 for non-members

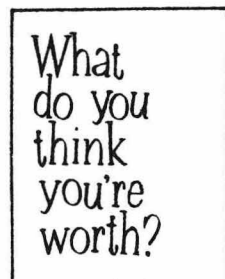
Save \$2.00 - - - - - 44.50 for ILDA members
(combination Ticket) 45.50 for non-members

SEND ONLY CERTIFIED CHECKS OR MONEY ORDERS PAYABLE TO: 1981 ILDA CONVENTION COMMITTEE.

WE ABSOLUTELY CANNOT BE RESPONSIBLE FOR CASH THAT IS SENT IN THE MAIL.

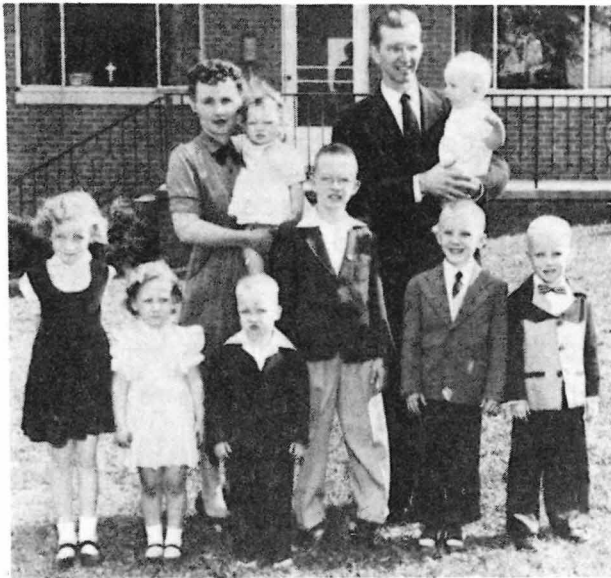
Total amount enclosed _____

Mail this form to:
ILDA CONVENTION COMMITTEE
c/o Pilgrim Lutheran Church
1233 So. Vermont Avenue
Los Angeles, California 90006





REMEMBER?



A picture taken of the Delbert Thies family when he served the deaf of Central Illinois from 1956 to 1962.

* * * *

Think About This!

There are two days in every week about which it is useless to worry.

One is yesterday with its mistakes and cares, its faults and blunders.

The other is tomorrow. It, too, is beyond our control. Tomorrow's sun will rise either in splendor or behind a mask of clouds - but it will rise.

That leaves today and usually our present trails are easier to bear than remorse for what happened yesterday, or dread of what tomorrow may bring. Let us, therefore, journey but one day at a time.

-from The Missippian 4/80

* * * *

READ - THEN GET BUSY!

INDIVIDUALS, CONGREGATIONS, AND REGIONS ARE ASKED TO SEND IN NAMES OF MISSION PROJECTS TO BE VOTED ON AT THE I.L.D.A. CONVENTION IN L.A. THIS SUMMER. SEND YOUR PROJECT IDEAS TO I.L.D.A. SECRETARY, LESTER AWLS, 1004 CHERRYWOOD DRIVE; CEDAR FALLS, IA; 50613. Thank you!

* * * *

THE AMERICAN RED CROSS

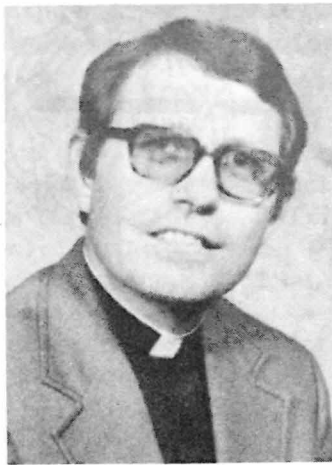
The 100th birthday of the American Red Cross was observed in Austin, Texas this month and culminating (ending) in a birthday party, Sunday, March 15th.

+ + + +

A JOKE FROM A DEAF FRIEND

A 9 year old boy was asked by his teacher, "What are the four seasons in one year?" He answered, "Football, basketball, baseball and vacation."

A BELATED INTRODUCTION TO THE REV. LARRY W. BOST



Since March of 1980, The Rev. Larry W. Bost has been appointed by the L.C.A. and called to the S.C. Synod to establish a Ministry with the Deaf in the Midlands of S.C. Pastor Bost and his wife and son live in Columbia S.C.

COLUMBIA, S.C. ... The Lutheran Men's Retreat at Camp Kinard on Feb.6 and 7 was attended by: Joe Looney, Albert Gibson, Frank Shealy, Francis Brant, Roddy Caughman, Bob Bates and Pastor Larry W. Bost. Alton Brant and Duane Harris graciously went along as the interpreters. The men enjoyed the fellowship and Bible Study. And April 10-12 there will be a Whole Family Retreat at Camp Kinard.

A.A.L. News

Atlanta, GA ... Although the number of Lutherans among students enrolled in the six colleges comprising the Atlanta University Center is admittedly small, the establishment of an on-going ministry at the complex has been a priority of National Lutheran Campus Ministry (NLCM) for some time.

The new ministry is now being developed at the Center by the NLCM with assistance from Aid Association for Lutherans (AAL) the nation's largest fraternal benefit society. AAL announced today that a grant totaling nearly \$50,000 has been awarded to help fund the project for the next four years.

"The Atlanta University Center is the largest consortium of Black higher education in the United States -- perhaps even in the world -- so I see this ministry as a great opportunity for outreach," said Rev. Robert Walker, Southern regional director for NLCM. "Lutherans have been sluggardly in addressing the Black community, so this is a chance to catch up on what we should have been doing for centuries."

The grant is part of AAL's general benevolence program which last year distributed more than \$2.2 million to worthy Lutheran causes. In addition, a similar amount was awarded to Lutheran students, high schools, colleges and seminaries on behalf of AAL's 1.2 million members.

Morehouse, Spelman, Morris Brown, Clark, Atlanta University and the Inter-denominational Theological Center are the institutions under the umbrella of the Atlanta University Center

* * *

THE NEXT TIME YOU ARE TEMPTED TO PICK OUT THE FAULTS OF OTHER PEOPLE, COUNT 10 OF YOUR OWN.

ST. LOUIS, MO ... "Forward in Remembrance," the special \$40 million fund appeal of the Lutheran Church-Missouri Synod has received commitments totaling \$18 million. approximately \$8 million was received in major gifts of \$25,000 or more. Another \$10 million has been committed in a "forward phase" of gifts ranging from \$2,400 to \$25,000. The appeal director, Dr. Gerhardt Hyatt, has also reported on one congregation of 150 members in which all members pledged a "forward phase" gift. Two phases remain in the appeal, both seeking gifts under \$2400 - although nearly half the potential "forward phase" donors are yet to be contacted.

+ + + +

NEW YORK CITY ... The Lutheran unity study guide in current use "clearly ignores the significance of the black church and the black experience." This statement, summarizing a paper by the Rev. Dr. Albert "Pete" Pero, has been affirmed in principle by the Lutheran Church in America's consulting committee on minority group interests. A professor at the Lutheran School of Theology at Chicago, Dr. Pero in his paper called for more discussion "in preparation for serious consideration of an inclusive Lutheran ministry." At a two-day February meeting here, the committee called for the greater utilization of minority persons as missionaries and also for pastoral letter from LCA President James Crumley concerning the deaths of 20 black children in Atlanta.

+ + + +

FLINT, MI ... June 19th, 20th & 21st are the dates Trinity Deaf, Pittsburgh, host this year's Great Lakes Regional Conference. According to information received at the GLRC pastors two day meeting in Columbus at Holy Cross Deaf Church recently. Housing will be at WPSD across the street from Trinity and a three hour dinner cruise on the Gateway Clipper will high light Saturday's schedule. "Blessings & Promises" is the announced theme and cost will be about \$35-40.

+ + + +

MUSKEGON, MI ... The Muskegon Lutheran "Support Group" for Deaf ministry has taken to the bowling alleys on certain week day nights in order to learn more signs from their deaf friends outside the formality of their sign language

+ + + +

OMAHA, NE ... Bethlehem D.L. Church observed two important milestones in the history of Bethlehem Deaf Congregation. March 1st was the 78th Anniversary of the first Lutheran worship service for the deaf in Omaha in 1903; and February 20th was the 43rd Anniversary of the dedication of their church building.

+ + + +

DID YOU KNOW THAT:

St. Patrick was a very skilled Christian preacher, who clearly taught the Word of God to the Irish people over 1,500 years ago. His famous prayer, ST. PATRICK'S BREASTPLATE, shows his dependence on God and his faith in the Triune God.

Are You Ready?

-from ALPHA newsletter
Rochester, New York
Pastor Mark Seeger

"...ALWAYS BE READY TO ANSWER EVERY PERSON WHO ASKS YOU TO EXPLAIN ABOUT THE HOPE YOU HAVE!"
1 Peter 3:15.

Are you ready? Can you answer the questions that people ask you about Jesus? You say that you are Christians, and I believe you. But can you share what you believe in? Can you clearly show someone that they are a sinner and that they need Jesus Christ? Can you convince them of your own faith?

The reason I am asking these questions, is because there is a group of Christians in this town (Rochester, N.Y.) who are very forceful in their approach. They will come up to you and ask you what you believe. If you can't answer them in the words they want, they will say that you are not a Christian. They will tell you that the Lutheran Church is a false church and that you must belong to their church to be saved.

They will ask you the basic questions, "Do you know for sure that you will go to heaven?" and "Why should God let you into Heaven?"

The answers to those questions are, "Yes!" and "Because I believe in Jesus Christ as my Lord and Savior from sin!" Those answers are very short and are very basic, but those are correct answers.

But you can learn longer and longer answers if you want, but they won't be necessarily be better answers. You can write a 500 page book about why God will let you into heaven, but if it doesn't say, "Because of faith in Jesus Christ, God's Son, my Savior," then the answer is worthless. You are saved from your sins by the death and resurrection of Jesus Christ. You receive this salvation by faith in Jesus. And God even gives you the faith.

If after you answer their questions, they still try to force you to go to their church, it shows that they are really not interested in your salvation but instead, they are interested in big numbers at church. Give them an answer. Always be ready to share your faith with anyone. But if that person tries to tell you that you are not a Christian you can only walk away and ignore them.

* * * *

DON'T COMPLAIN ABOUT GROWING OLD. Many PEOPLE DO NOT HAVE THAT CHANCE.

DON'T COMPLAIN ABOUT GROWING OLD. MANY PEOPLE DO NOT HAVE THAT CHANCE.

* * * *
The cheapest-if not the best- computer is the one located between your ears.

* * * *

Five Nominated To Head LC/MS

ST. LOUIS, MO ... The Rev. Dr. Walter A. Maier, professor at Concordia Seminary, Fort Wayne, Ind., has received the most nominating votes for the synod presidency.

Presidential nominees were recently selected by congregations of the 2.7 million member denomination. Election of a successor to Rev. Dr. Jacob A.O. Preus, synod president since 1969, will have the highest priority at the synod's biennial convention, to be held here July 3-10.

Maier, who is also third vice president of the synod, received 866 votes.

Other nominees are the Rev. Dr. Ralph Bohlmann, president of Concordia Seminary, St. Louis, Mo., 744 votes; the Rev. Dr. Gerhardt W. Hyatt, president of Concordia College, St. Paul, Minn., 624 votes; the Rev. Dr. Robert C. Sauer, administrative assistant to Preus and fourth vice president of the synod, 301 votes, and the Rev. Dr. Charles S. Mueller, pastor of Trinity Lutheran Church, Roselle, Ill., 295 votes.

Despite Maier's higher vote count, some Lutheran sources described Bohlmann as the probable winner. Bohlmann, a theological conservative, has a broad base of support, sources say. He is a popular speaker at synod gatherings.

The Rev. Dr. Guido A. Merken, a Lutheran pastor in San Antonio Texas, received 486 nominations for the presidency but asked to have his name withdrawn.

Except for Bohlmann, the presidential nominees are also on the synod slate for first vice president. Bohlmann received 349 nominations for that post, but declined to run.

The Rev. Dr. August Bernthal, a Lutheran pastor in Winter Haven, Fla., is the fifth nominee for first vice president.

* * *



"FOR BETTER OR FOR WORSE?
YOU MEAN I HAVE A CHOICE?"

Signs from the Spirit — "HELL"

This sign and word, "hell," refers to a word found thirty-one times in the Old Testament and twenty-three times in the New Testament. Jesus Himself used the word fifteen times in His teaching. Truly, there is a place called hell!

The King James Version translates three different Greek words of the Bible all simply "hell." The words are HADES (Matthew 11:23, 16:18, Luke 16:23, Acts 2:27, Revelation 20:14, etc.); GEHENNA (Matthew 5:22, 29,30, Mark 9:43, Luke 12:5, etc.); and TARTARUS (only in II Peter 2:4). From a careful study of the Bible verses about hell, we learn that HADES (unseen) is a temporary place (Revelation 20:14) and will in the future be thrown into the "lake of fire." Probably GEHENNA is the same as the "lake of fire." Jesus uses the word GEHENNA twelve times to describe a place of eternal punishment. Revelation 20:14 says the "lake of fire" is the "second death."

TARTARUS (II Peter 2:4), where the angels that sinned were kept, was believed by the Greeks to be the part of HADES where the wicked were punished. It may be the place Jesus described in His story of the Rich Man and Lazarus (Luke 16:23) where the Rich Man was in torment.

We may not know all about "hell." But we understand enough from the Bible to know that it is a place we don't want to go. We don't have to go to "hell" IF WE ARE SAVED THROUGH JESUS CHRIST!

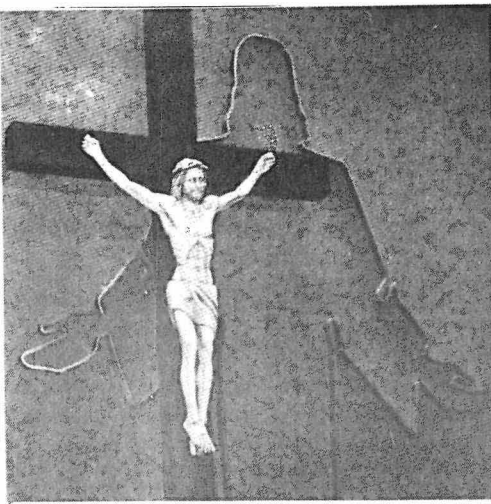
* * * *

ARE WE PREPARED TO BRING THE GOOD NEWS TO THOSE PEOPLE?

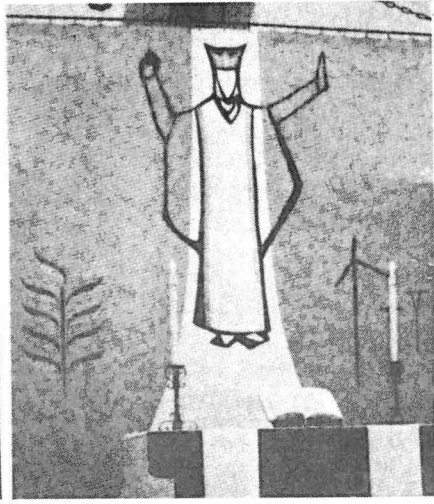
From the 1980 U.S. Census, the following facts emerge:

1. In the past decade, the U.S. population increased 11.4%.
2. The 1970 count: 203,302,031; the 1980 count: 226,504,825.
3. Approximately 119 million reside in the South and West.
4. Approximately 108 million now reside in the Northeast and north central states.
5. In the past decade, only the District of Columbia, New York and Rhode Island lost people.
6. During the 1970s, the West grew by 23.9%; the South, 20%; north central states, 4%; and Northeast, only 0.2%. The population shift toward the Sunbelt is undeniable.
7. California was the largest gainer, with 3.7 million additional residents.
8. Major surprise of the Census was our total population, which is 4.8 million greater than the April 1980 estimate. Almost all these "new people" reside in the South and West and many probably were not counted in 1970.

Children's Page



BEFORE



AFTER

ALWAYS THE SAME

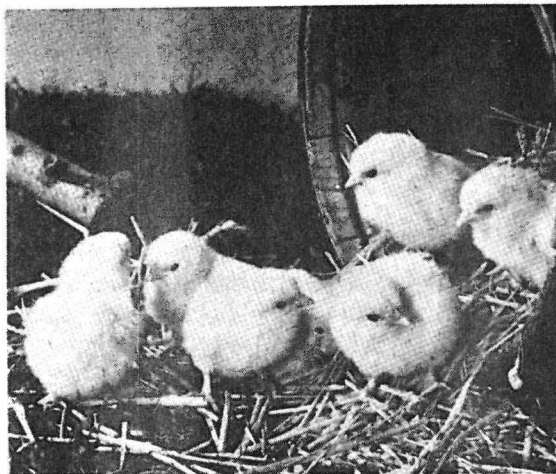
These two pictures help us remember Jesus at two different times. Can you tell which times? The first picture shows Jesus on the cross. But it is Jesus standing with His arms spread out. The second picture shows Jesus with His arms spread out again. He is not on the cross, but He is wearing a crown.

The first picture is about Jesus on the cross. It tells about His suffering and death. The second picture shows Jesus after He rose from the dead.

But there is one thing the same about these pictures. Can you tell what it is? In both pictures Jesus has His arms spread out. In both pictures He is saying, "Come to Me."

God's children know Jesus always loves them. They remember the Bible words, "God is love." Our Savior on the cross wants us to come to Him. He wants us to remember that He loves us. On the cross Jesus says, "Come to Me and I will forgive your sins." On Easter morning Jesus says, "Come to Me and I will give you life with Me, now and forever."

* * * * *



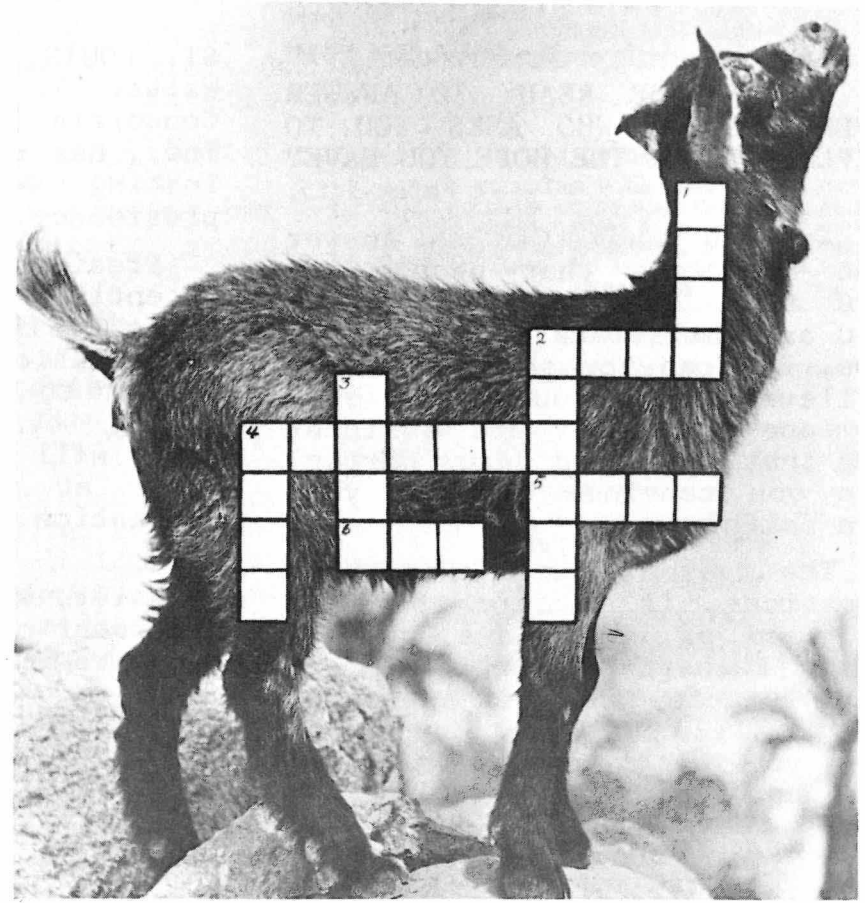
New Beginnings

Jesus often told His followers about how many things of this world can help us remember beautiful things about God. New-born baby chicks are a sign of new life in the spring.

Sometimes older people have a new beginning too. This man is making baskets. He is learning to use his fingers and hands again. He is making something that others want and need. Making baskets is a new beginning for better health.



Animals of the Bible



ACROSS:

2. Smokey the _____ (Proverbs 17:12).
4. "Can the _____ change his spots?" (Jeremiah 13:23).
5. The animal in the picture.....(Psalm 104:18).
6. Sly as a _____ (Matthew 8:20).

DOWN:

1. A wild pig-like animal.....(Matthew 8:20).
2. A policeman's star plus "R". (Ezekiel 16:10).
3. "Keep the _____ from the door." (Isaiah 11:6).
4. Daniel was in the den of what animal? (Daniel 6:16).

Getting Ready for Holy Week



Holy Week is a special time of the year. It's a special time of Lent. God's children all around the world remember Good Friday, the day Jesus died to save everyone.

God's children remember this day in different ways. Many boys and girls all over the world help their church to get ready for Holy Week. For Good Friday they help hang a black cloth on the church cross. Everyone who saw the black cloth draped over the cross knew it was a special time for their church.

The black cloth draped over the cross help all of us to remember how Jesus showed His love in suffering and dying on the cross.

THE EASTER CROSS

IS A SIGN OF

NEW LIFE TOO!

... It is the beginning of our new life. The beginning is in Jesus, our Savior, who died but rose again on Easter morning.

In Jesus, God's children have a new beginning as part of God's family.

