



The DEAF LUTHERAN

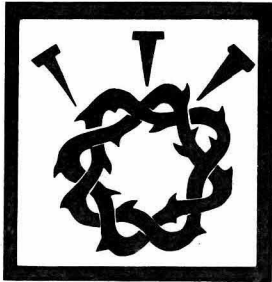


Official Publication of the International Lutheran Deaf Association & the Board for Missions of the Lutheran Church-Missouri Synod

March-April, 1985

St. Louis, Missouri

Volume 77, No. 2



LENT

The time called "LENT" begins this year on Feb. 20. It is the time christians set aside each year to remember the

suffering and death of our Saviour, Jesus Christ.

Lent has an interesting history. Not being a Bible word, it means to lengthen or make longer. Long ago, christians took only 40 hours to remind themselves of Christ's passion and death from Good Friday through Easter. As time went by, the period was gradually lengthened from 40 hours to 40 days, the longer period corresponding to Jesus' 40 days in the wilderness where He was tempted by the devil.

The earliest that Lent can begin is on February 5 and the last time that occurred was in 1818. The latest is March 10 and next time it is observed then will be in the year 2038. The date of Lent is determined by the date of Easter, which since 325 A.D. has been observed on the first Sunday following the 14th day of the Paschal moon.

While all this may sound interesting, it is not all that important, really. What is most important is that we remind ourselves of why Jesus died and the bearing His death has on our own. Jesus died for our sins and paid the full price God demanded for sin. Because He died and rose again on the third day, which we celebrate as Easter, we, too, shall live with Him in glory who believe and trust in Him.

The period of Lent and Easter are times of both sadness and joy for followers of Jesus. Sadness because of the terrible agony Jesus endured for us in our place and joy in the victory of His resurrection.

HAPPY EASTER! May your joy be full.

AN EASTER STORY

The traveler, relaxing on the front porch in a rural community, noticed the newspaper boy coming on his bike with the evening paper.

Noting the sign, "PUPPIES FOR SALE," he stopped abruptly and asked the farmer, "How much do you want for the pups, mister?"

"Twenty-five dollars, son."

The boy's face dropped. "Well, sir, could I at least see them anyway?"

The farmer whistled, and in a moment the mother dog came bounding around the corner of the house tagged by four of the cutest puppies you will ever see, wagging their tails and yipping happily. At last, another pup came straggling around the house, dragging one hind leg.

"What's the matter with that puppy, mister?" the boy asked.

"Well, son, that puppy is crippled. We took her to the vet and the doctor took an X-ray. The pup doesn't have a hip joint and that leg will never be right."

To the amazement of both men, the boy dropped the bike, reached for his collection bag, and took out a fifty-cent piece. "Please, mister," the boy pleaded, "I want to buy that pup. I'll pay you 50 cents every week until the \$25 is paid. Honest, I will, mister."

The farmer replied, "But, son, you don't seem to understand. That pup will never, never be able to run or jump. That pup is going to be crippled forever. Why in the world would you want such a useless pup as that?"

The boy paused for a moment, then reached down and pulled up his pant leg, showing that all too familiar iron brace and leather knee-strap holding a poor twisted leg. The boy answered, "Mister, that pup is going to need someone who understands him to help him in life!"

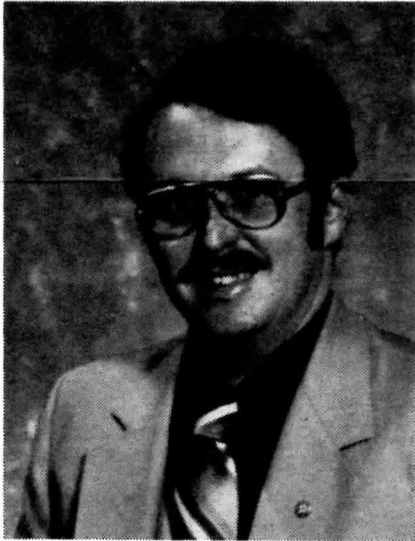
AN EASTER STORY

(continue on page 3)

PLANNING STAGES FOR 1985 ILDA LEADERSHIP TRAINING PROGRAM ADVANCE

By Charles J. Kotal
ILDA President

The International Lutheran Deaf Association is planning to conduct a Leadership Training Program in three regions for at least 200 deaf lay people from 50 Lutheran congregations, including both churches for the deaf



Charles J. Kotal

and hearing churches with deaf ministries. The purposes of the Leadership Training Program are:

1. To develop a greater degree of deaf lay leadership at the congregational level and beyond.
2. To enable deaf lay people to discover, develop and use the gifts of the spirit that they have received.
3. To enable deaf lay people to share the Gospel with other deaf people of all ages.
4. To increase lay involvement in the functions and activities of the congregation.

The LTP steering committee members are Charles Kotal, program chairman; Jackie Kemper, secretary-treasurer; Rev. Donald Zuhn, facility committee; Rev. William Ludwig and Rev. Ron Friedrich, program committee.

Current plans call for seminars to be held at three separate locations in the fall of 1985: West, Portland, Ore., Concordia college, Sept. 5-8, 1985; East, Washington, D.C., Gallaudet college, Oct. 10-13, 1985, and Central, Madison, Wis., Yahara Center, Nov. 7-10, 1985.

One plenary session will include Bible study on "Spiritual Gifts" and exercises in developing personal communication skills. And participants will have a choice of **two** of the following workshops:

- a) Church program planning
- b) Responsibilities of church officers
- c) Teaching children in Bible class
- d) Teaching adult Bible class
- e) Leading youth group
- f) Leading workshop, music and choir
- g) Evangelism and witnessing

The ILDA will help pay some of the expenses of up to four persons from each congregation. The ILDA board asks that the costs for the Leadership Training Program be divided among the ILDA, each participating congregation and each participant as follows:

The **individual** pays:

- \$25.00 for program registration
- \$25.00 for lodging and meals and 25 per cent of travel costs

The **congregation** pays:

- \$50.00 (total) for program registration
- \$25.00 lodging and meals each participating member and 25 per cent of travel costs for each participating member.*

The **ILDA** pays:

- All remaining costs of the program;
- All remaining costs for lodging and meals and 50 per cent of travel costs of each participant with a maximum of \$200.00.*

*If the allowable travel expense for a person is less than \$50, then the congregation and the individual each pay one-half. In other words, both the individual and the congregation must pay a minimum of \$25 for travel before the ILDA will reimburse additional travel expenses. In this way, there is at least some equity for those who must travel longer distances.

Allowable travel expenses for participants going by car pool are as follows:

- One (1) person \$.12/mile
- Two (2) people \$.15/mile
- Three or more \$.20/mile

Air fares (using discount fares, if possible):

- Under 300 miles, (one way) **None.**
- Car pool preferred.

Lutheran World Relief, 1985 . . .

THE PARADOX OF THE HELPING HAND

There is a paradox that puzzles many conscientious Christians concerning the Biblical mandate to minister to the poor. It arises in part because of special circumstances in the human situation which we confront in the world of 1985. We wonder about such things as:

1. Does our aid, however well-intentioned, increase the dependence of the poor upon the affluent?

2. Do our efforts to preserve lives result in an increase in world population which will need more help than we can ever supply?

3. Why do the people we help, particularly in the Third World lands, develop greater animosity against us and our way of life?

4. There is strong suspicion that Marxist governments such as the one in Ethiopia are using our aid and food to further their own conquest of the people in these lands by denying them food. There is also strong evidence that food shipped to southeast Asia has been refused overland shipment to refugees by Communist governments and left to rot and decay on the docks where it arrived. How are Christians supposed to react in the face of such happenings? What should our answer be when we read that millions of dollars are being used to procure weapons when their own are starving?

Questions like these trouble many who sit in church pews; they make us pause before we

reach for our wallets when we hear hunger appeals. The truth of the matter is, of course that we Christians are called to respond to human need, not on the basis of wisdom which works in the world, but in obedience to our Lord; not simply for the sake of the poor, but of our hunger for unity with God whom Jesus Christ called us to serve. We serve Him spiritually.

"As you did it to one of the least of these," Jesus said, "you did it to Me." (Matt. 25:40) In other words, "not for the sake of the poor, but rather in response to God who made us and loves us and lays upon us the moral imperatives which make for life in Christ." That is the reason we respond to human need.

This Biblical insight sweeps away all the excuses we raise concerning whether the poor are really "deserving," whether some of them cheat, whether they seem able to use our charity wisely, or even whether our generosity solves their problems. We give because we must. "When you give alms," said Jesus, "do not let your left hand know what your right hand is doing." (Matthew 6:3)

Then the question may be asked, "What about all the evil we see in high places that is causing so much suffering?" Again, we read St. Paul's words in Romans 12:19-21:

"Dearly beloved, avenge not yourselves, but rather give place unto wrath: for it is written, Vengeance is mine; I will repay, saith the Lord. Therefore, if thine enemy hunger, feed him; if he thirst, give him drink: for in so doing thou shalt heap coals of fire on his head. Be not overcome of evil, but overcome evil with good.

An Easter Story (continue from page 1)

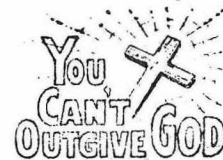
You and I are spoiled and crippled by sin. Yet the risen, living Jesus Christ has given us hope. He understands us . . . our temptations, our fears, our failures. By His resurrection we have help in this life and hope for the life to come.

Isn't it time for you to come and meet Him?
--Selected

Planning Stages (continue from page 2)

300-750 miles (one way), \$300 maximum
Over 750 miles (one way) \$400 maximum

Interested persons wishing to participate in the Leadership Training Program (LTP) should contact your pastor or layminister or your local congregation chairperson.



A WORD TO THE WISE . . . it is possible to give away and become richer. It is also possible to hold on too tightly and lose everything. Yes, the liberal man shall be rich! By watering others, he waters himself.
Proverbs 11:24-25

NOTES FROM OUR CHURCHES FROM HERE AND THERE

Does the meanest thief live in Portland? Pastor Carstens reports that he may as their church has been burglarized on several occasions with a number of valuable items taken.

Rev. David Mueller of Word of God Lutheran church, Cedar Rapids, recently returned a call to Mount Olive Lutheran church, Billings, Mont. where he would have served both the hearing and the deaf.

Dr. Michael Warner of Waterloo, Iowa, who was the presenter at last year's Ephphatha Conference at River Forest, Ill. and who is expected to return again this year at Elkhorn, Wis., has received a call to the Graduate School of Concordia Seminary, St. Louis. As of Feb. 3, Dr. Warner had not decided.

Rogate Lutheran church, Clearwater, Fla. has discontinued its "Silent Press" operation according to word received from Pastor Frank Wagenknecht, who reports lack of sufficient business to sustain the print shop.

Introducing the Editor . . .

After serving as interim editor of THE DEAF LUTHERAN since the fall of 1983, the ILDA board of directors made the appointment of Lester Ahls permanent at last regular meeting in St. Louis in November. Mr. Ahls notes that some churches have not as yet included him on their mailing lists and would appreciate receiving their newsletters, as well as regional news from ILDA presidents and secretaries.



Lester Ahls

Rev. Alvin E. Ferber's beloved wife, Marie, departed this life to be with our Saviour on Nov. 9, following a massive stroke suffered on Sept. 29. Pastor Ferber also lost a son during surgery last year. Retired after having served both the congregations in the Denver and Kansas City for many years, he resides at 246 E. 74th Terrace, Kansas City, Mo. 64114.

Pastor Bob Oettel of Omaha tells this one concerning a seven-year-old boy who had a very ill sister in need of a blood transfusion to save her life. Later, the youngster was asked after it was done how he felt. "Alright, he said, but when will I die?" Of course, the boy did not understand, but that did not stop him from a willingness to lay down his own life to save his sister's. ". . . and a child shall lead them." Isaiah 11:6.

Bethesda Lutheran Home announced the acquisition of two more group homes for mentally retarded adults, one in Kirkwood, Mo. and the other in Frederick, Md. The Maryland residence, the first on the east coast, is located at 201 W. Second St., and will be dedicated on Feb. 10. The home in Kirkwood is being sponsored by Concordia Lutheran church and is located at 1019 Geyer Road. A total of 16 people will be housed at these facilities, eight at each one.

Holy Cross Lutheran church, St. Louis, received a grant recently from Aid Association for Lutherans to set up a telephone relay for the deaf wishing to contact hearing and business numbers not having TDD equipment. Pastor Richard Moody says they are just taking advantage of new technology from the phone company which will, it is hoped, fill an important communication need for the St. Louis deaf community. Volunteers will handle calls for deaf people.

SIGN LANGUAGE COURSES

More than 30,000 students are enrolled in sign language classes at 373 community and junior colleges around the country this year, according to a national survey conducted by the Gallaudet college graduate department. The survey showed more than 2,100 students were enrolled in sign language interpreter training classes at 54 of the colleges.

NOMINATIONS FOR NATIONAL ILDA OFFICE AT 8TH BIENNIAL CONVENTION, 1985

PRESIDENT-ELECT

Harold D. Thuve, Gardena, Calif.
Ronald L. Madding, Portland, Ore.
Ronald Byington, Milwaukee, Wis.
Elmer D. Francisco, Detroit, Mich.

SECRETARY

Charles J. Kotal, Cerritos, Calif.
Ronald Byington, Milwaukee, Wis.
Henry D. Walls, Pittsburgh, Pa.
Donald S. Mowl, Washington, Pa.

TREASURER

Jackie Kemper, St. Louis, Mo.
Joseph J. Kindred, Indianapolis, Ind.
Elmer D. Francisco, Detroit, Mich.

PASTORAL ADVISER

Rev. Ronald E. Friedrich, Dallas, Texas
Rev. Donald E. Leber, Columbus, Ohio
Rev. William A. Ludwig, Seattle, Wash.
Rev. Richard A. Moody, St. Louis, Mo.
Rev. LaVern M. Mass, Kansas City, Mo.

At press time, three regions had yet to submit nominations for the above positions. Space does not permit complete biographies of all candidates for office, or their pictures. However, it is customary for candidates to be introduced to the convention a day before voting begins and state their platforms and field questions from the audience.

A PUZZLE FOR YOU . . .

The names of 15 books in the Bible are concealed in the following paragraph. Can you spot them?

"I once made some remarks about hidden books of the Bible. It was a lulu--kept some people looking so hard for facts and studying for the revelation that they were in a jam. Especially since the books were not capitalized. But truth finally struck numbers of our readers. To others, it was a real job. We want it to be a most fascinating few moments for you. Yes, there will be some really easy to spot. Others require judges to determine. We must admit it usually takes a minute to find one, and there will be loud lamentations when you see how simple it is. One little lady says she brews tea while she puzzles her brain. Well, get to work if you want to complete it.

(Answers in correct order can be found elsewhere in these pages.--Ed.)

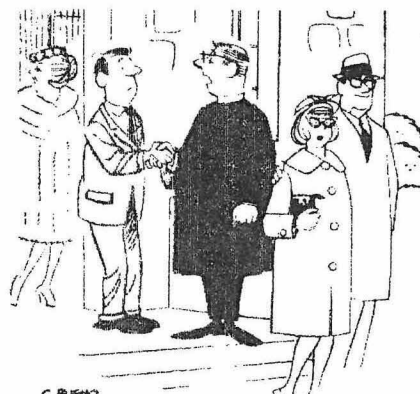
Silent Lutheran Church, Madison, Wis., Observes 35th Anniversary Nov. 18

Approximately 100 members and visitors joined together to celebrate 35 years of church services for deaf Lutherans and their families in Madison on Sunday, Nov. 18. Following services in the morning led by Pastor Wallace Waite, the congregation met in downtown Madison's Quality Inn to reminisce on blessings received in years past and to beseech the Lord for His continued blessings in the future.

Addressing the group was Lester Ahls, ILDA President-elect.



GUEST SPEAKER--Lester Ahls, ILDA President-elect, addresses celebrants in Madison during 35th anniversary banquet.



"DON'T EXPECT TOO MUCH
FROM ONE VISIT."

Mainstreaming in the Public School System: Good or Bad? A Reader Service Report

Although the U.S. Congress and the Department of Education continue to provide full support of P.L. 94-142 and, by inference, to push for mainstreaming, I wonder how long it will last. Not long ago a report was released by the Heritage Foundation in Washington which challenges the results of mainstreaming. Titled "The Education Crisis: Washington

Shares the Blame," the report was written by Eileen M. Gardner, a policy analyst with the foundation.

According to the report, mainstreamed programs yield **minimal** positive results for handicapped children and generally damaging results for the normal child. The report states:

"A first step in restoring the nation's educational health must be the dismantling of the power base of the lobbyists--the Department of Education. In addition, **special schools should be established to meet the special needs of students** (such as the mentally retarded and physically handicapped), who cannot be easily incorporated in a normal school program."

In commenting on P.L. 94-142 the report indicates that the requirements of the law "actually have reduced the effectiveness of the education that many handicapped children once received. Special need students, accustomed to individualized programs, are placed in regular classrooms. These special students predictably are often tormented and teased because of their emotional problems, mental retardation or physical abilities. Valuable teacher time is spent on the highly questionable activity of filling out IEP's."

Among the recommendations of Dr. Gardner, who has had six years' experience in teaching handicapped children, is that public schools should not be required to educate those children who cannot, without damaging the main purpose of public education, function in a normal classroom setting.

--Dr. Mervin D. Garretson
Gallaudet Alumni News

GALLAUDET COLLEGE INAUGURATES A NEW PRESIDENT OCT. 19

Dr. Jerry C. Lee, a former member of the faculty of Gallaudet College, Washington, D.C. was inaugurated as the school's sixth president on Oct. 19, 1984 amid ceremonies attended by approximately 3,000 people which included many dignitaries.

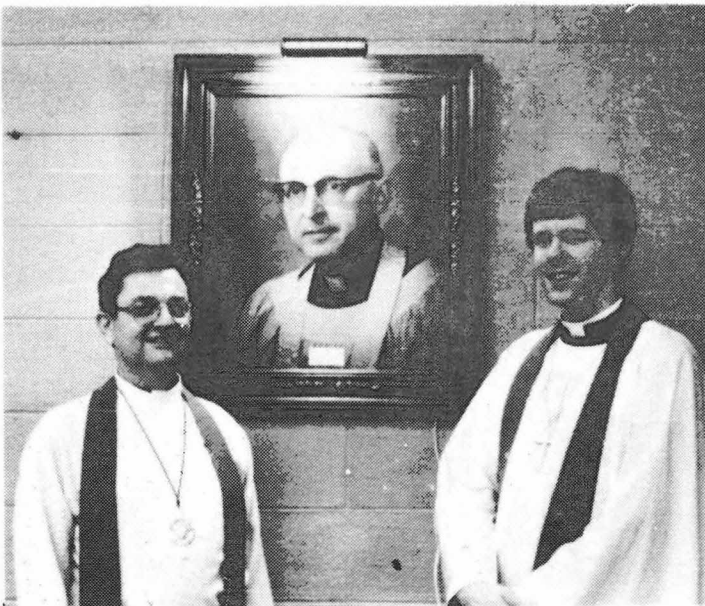
He succeeds Dr. W. Lloyd Johns, who unexpectedly resigned Jan. 20, 1984 after a short tenure of about three months.

Holy Cross, Delavan, Observe 25th

About 115 people flocked into Holy Cross Lutheran church, Delavan, Wis., Sunday, Nov. 11 to observe the 25th anniversary of the church which is located at 116 Walnut Street, directly across from the campus of the Wisconsin School for the Deaf.

Following a service of thanksgiving led by Pastor Steven R. Schlund and Rev. Donald W. Zuhn of St. Louis, members and guests assembled at the Quality Inn to do full justice to a delicious dinner.

Congregation President George Tscherner introduced various guests, among them being Rev. Zuhn, the main speaker and the Son-Shine Singers, Karen Dammeyer and Dorothy Sparks of Omaha, who performed.



REV. MARTIN KOSCHE REMEMBERED--A portrait of the pastor who served Holy Cross at the time of his death Dec. 27, 1981, hangs in the church. Pictured is Rev. Donald Zuhn, left, and Rev. Steven Schlund, right.

1985 ILDA CONVENTION

JULY 4-7

THE MARC PLAZA

509 West Wisconsin Ave., Milwaukee, Wis.
(414) 271-7250/Toll Free (800) 558-7708

Theme: Come! Follow Me!

*PROGRAM BOOKS \$2.00

TENTATIVE SCHEDULE:

THURSDAY, JULY 4, 1985

	MEMBER	NON-MEMBER
NOON- 5:00 p.m.--REGISTRATION (MUST!!) -----	\$ 5.00	\$ 8.00
5:30- 7:30 p.m.--FREE		
7:30- 8:30 p.m.--OPEN WORSHIP		
8:30- 9:00 p.m.--ORIENTATION		
9:00-11:00 p.m.--ENTERTAINMENT AND FELLOWSHIP HOSTED BY EMMANUEL -----	\$ 7.00	\$ 8.00

FRIDAY, JULY 5, 1985

(8:30- 5:00 p.m.--REGISTRATION)		
9:00- 9:30 a.m.--OPENING DEVOTION		
9:30-12:00 p.m.--FIRST BUSINESS SESSION		
12:00- 1:30 p.m.--LUNCH ON YOUR OWN THRU GRAND AVE. MALL		
2:00- 5:00 p.m.--TOUR AROUND MILWAUKEE OR FREE TIME OR WORKSHOPS -----	\$ 7.00	\$ 8.00
5:00- 7:00 p.m.--FREE TIME--SUPPER ON YOUROWN		
7:00- 9:00 p.m.--SECOND BUSINESS SESSION		
9:00-11:00 p.m.--ENTERTAINMENT HOSTED BY "CRC" -----	\$ 8.00	\$ 9.00

SATURDAY, JULY 6, 1985

(8:30- 5:00 p.m.--REGISTRATION)		
9:00- 9:30 a.m.--OPENING DEVOTION		
9:30-12:00 p.m.--THIRD BUSINESS SESSION		
12:00- 1:30 p.m.--LUNCH ON YOUR OWN		
1:30- 3:00 p.m.--FOURTH BUSINESS SESSION		
3:00- 5:00 p.m.--WORKSHOPS		
5:00- 6:30 p.m.--FREE		
6:30-11:00 p.m.--BANQUET/ENTERTAINMENT/SPEAKERS -----	\$24.00	\$26.00

SUNDAY, JULY 7, 1985

7:00- 9:00 a.m.--BREAKFAST (OPTIONAL) -----	\$ 7.00	\$ 8.00
9:00-10:30 a.m.--BIBLE CLASS		
10:30-12:00 p.m.--WORSHIP (COMMUNION)		
12:00 p.m.--ADJOURNMENT		
3:00 p.m.--CHECKOUT!!!		

TOTAL AT THE DOOR ----- **\$60.00 \$69.00**

***\$50.00--EARLY BIRD COMBO FOR MEMBER (BEFORE JUNE 1, 1985)

\$60.00--SENIOR CITIZEN (62 OR OVER) AND/OR STUDENT

ENTERTAINMENT SATURDAY ONLY MEMBER \$10.00;
NON-MEMBER \$12.00

Make money order or check payable to 1985 ILDA convention fund, send to Kathryn Kahl, 1020 E. Montana Ave., Oak Creek, Wis. 53154.

SEE PAGE 8 FOR THE COST OF HOTEL ROOMS.

Weatherman Sets New Cold Record at Indianapolis During January

WOW! What a January!! That was the comment being heard around Peace Lutheran church, Indianapolis, when temperatures plummeted to an all time low of -22 and a high of "only" -13. The wind chill index was "only" -80 to -56 all day Sunday, Jan. 20. The extreme cold was blamed for the cancellation of church services, not the Super Bowl game.

If the cold wasn't enough, there was water everywhere. The pipes froze in the church attic and popped the faucets in the kitchen, soaking every inch of the carpeting. However, the members proved themselves least equal to the emergency. Chipping in to clean up were, besides the pastor, Melvin Squire, Evelyn Squire, Gil Boesenberg, Joe and Hazel Kindred, Harold Larsen and John Squire. Brought into action were mops, cloths, machines and fans and even a dehumidifer. The insurance company sent over plumbers and carpet cleaners.

They now have clean carpets, new kitchen faucets, and a repainted chancel wall. The insurance company adjuster promises that the water stained doors will be taken care of.

"Thanks be to God it was not any worse."

ANSWERS TO PUZZLE ON BOOKS IN BIBLE

Mark, Luke, Kings, Acts, Revelation, James, Ruth, Numbers, Job, Amos, Esther, Judges, Titus, Lamentations and Hebrews.

COST OF HOTEL ROOMS

Single is \$47.00; double \$60, and \$5.00 extra for each additional person in the room. If people want to stay in deluxe tower room, it will be \$15 extra and it includes breakfast.

HAVE YOU HEARD

Why are the mayors all quitting?
Why are the cities all broke?
Why are the people all angry?
Why are we dying of smoke?
Why are the streets unprotected?
Why are the schools in distress?
Why is the trash uncollected?
How did we make such a mess?

--anonymous

I like the winter snows. It makes my lawn look as nice as my neighbors'.



SOME ANNIVERSARY CELEBRANTS AT HOLY CROSS NOV. 11
--Back row, left to right, George Tschanner, congregation president; Pastors Donald Zuhn and Steven Schlund, and David Copeland. Front row, left to right, Son-Shine Singers Karen Dammeyer and Dorothy Sparks.

The DEAF LUTHERAN

March-April 1985

OFFICIAL PUBLICATION OF THE INTERNATIONAL LUTHERAN DEAF ASSOCIATION AND THE BOARD FOR MISSION, THE LUTHERAN CHURCH-MISSOURI SYNOD, PUBLISHED BI-MONTHLY BY CHRISTIAN ARMORY OF COLUMBUS, OHIO 3RD CLASS POSTAGE PD. COLUMBUS, OHIO. SUBSCRIPTION FEES: INDIVIDUAL..\$4.00 PER YEAR. CHURCH BLANKET PLAN..\$3.50 EACH MEMBER PER YEAR. PLEASE SEND ALL SUBSCRIPTION FEES AND ADDRESS CHANGES TO ELMER FRANCISCO, BUSINESS MANAGER, 6861 EAST NEVADA AVE., DETROIT, MICH. 48234. PLEASE SEND ARTICLES, STORIES AND PICTURES TO LESTER AHL, EDITOR, 1004 CHERRYWOOD DR., CEDAR FALLS, IOWA 50613.

NON-PROFIT ORG.
U.S. POSTAGE
PAID
PERMIT 1444
COLUMBUS, OHIO