



# The DEAF LUTHERAN



Official Publication of the International Lutheran Deaf Association & the Board for Missions of the Lutheran Church-Missouri Synod

January-February, 1986

St. Louis, Mo.

Volume 78, No. 1

## NEW SECRETARY FOR DEAF MINISTRY TO BE CALLED EARLY IN 1986

A letter from the board for mission services received by ILDA President Lester Ahls indicates that a new secretary for deaf ministry in the Lutheran Church-Missouri Synod may be called early in 1986, possibly in January.

The post, which has been vacant approximately one year since former secretary Rev. Donald W. Zuhn resigned to accept a call to Prince of Peace Lutheran church, Minneapolis, Minn., was the subject of at least two resolutions moved and passed at the ILDA convention held in Milwaukee last summer.

While it is not known who may be called to fill the position, the new secretary will be asked to evaluate the ministries to the deaf

in each district of the LCMS with a list of consultants proficient in manual communication to conduct an annual review.

A new directory, updated periodically, may also become available in the future following the appointment of the new staff person overseeing deaf ministry. Such a directory would compile a list of pastors and support staff, member Lutheran churches, fields and parishes, ILDA regions, synodical standing committees on deaf ministry, outreach programs . . . to name a few.

An announcement and additional information will appear in the pages of THE DEAF LUTHERAN concerning the appointment of the new secretary as soon as it becomes available.

## DEAF LUTHERANS HELP SOW THE SEED IN BRAZIL

By Alice Hagemeyer, ERILDA Secretary  
2930 Craiglawn Road,  
Silver Spring, Md. 20904

There are more than 50 television stations which broadcast throughout Brazil. Are television viewers and readers of the more than 260 newspapers and 800 magazines published in

### Explosion Shakes Home, Editor and Wife Have Close Call Oct. 22

ILDA President Lester Ahls and his wife, Betty were counting their blessings this thanksgiving just past. A violent explosion rocked their home Tuesday morning, Oct. 22 when an LP gas space heater they had been using for about five years exploded, causing about \$15,000 damage to their home and contents.

Betty, who was about 10 feet away from the blast, suffered first, second and third degree flash burns about the face, hands and lower extremities and was rushed by ambulance

EXPLOSION

(continue on page 5)

Brazil aware about the television breakthrough for the deaf community in America? Do people in Brazil, deaf and hearing, know about our National Captioning Institute and the wonders of closed captioning, including live captioning of special programs?

In Brazil there is a school called Concordia special school, established in 1967 through the Lutheran Church-Missouri Synod in Porto Alegre. One hundred and sixty children attend that school. In 1984, Rev. Ely Prieto, a hearing man who had been in the United States to learn about our deaf education programs and ministry to deaf people became the first missionary for deaf people in Brazil in the Lutheran church. He helped with Concordia. While Brazil is about as large in area as the United States, there are only two ministers working among deaf people -- a Catholic priest in the north and the Reverend Prieto down in the south.

Deaf Lutherans of the eastern region of the International Lutheran Deaf Association,

DEAF LUTHERANS

(continue on page 6)

## The Pastor Comments . . .

# LOTTERIES: SHOULD YOU PLAY IT?

By Rev. Robert C. Rowland  
Valley Lutheran church  
18 Lesbos Ct.,  
Sacramento, Calif. 95823

Recently, a deaf woman asked her pastor, "What's wrong with buying lottery tickets? The money from sales helps schools, right?" These are questions that need to be answered because sales of lottery tickets are really big. In fact, lottery ticket sales are so high that some are sold out ahead of schedule.

Are people buying lottery tickets to help our schools? Most people who buy lottery tickets are hoping to get a big winner. Some people want a big winner so much, they are spending money on the lottery that they should be spending for food, clothing and other necessities. One woman told TV reporter that she would buy less food to be able to spend more money on lottery tickets. Recently, an elderly man in Sacramento spent more than \$2,000 of his Social Security money on lottery tickets. His winnings were only \$600. So this poor old man threw away \$1,400. A welfare mother is a finalist for the \$2 million drawing that was held in October. People are using money that is necessary for living to buy lottery tickets!

What about you? Have you bought any lottery tickets? Are you thinking of buying one or more lottery tickets in the future? Before you get "hooked" playing a lottery, please think about WHY YOU WANT TO PLAY. Do you want to win big and get rich? The Bible says, "Those who want to get rich fall into temptation and are caught in the trap of many foolish and harmful desires, which pull people down to ruin and destruction." (1 Timothy 6:8-10). Do you have enough money to play the lottery? Or, will you lose the money you usually spend on food, clothes, heat and lights, just for a chance to win big with the lottery? The Bible says, "The love of money is a source of all kinds of evil. Some have been so eager to have money that they have wandered away from their faith and have broken their hearts with many sorrows."

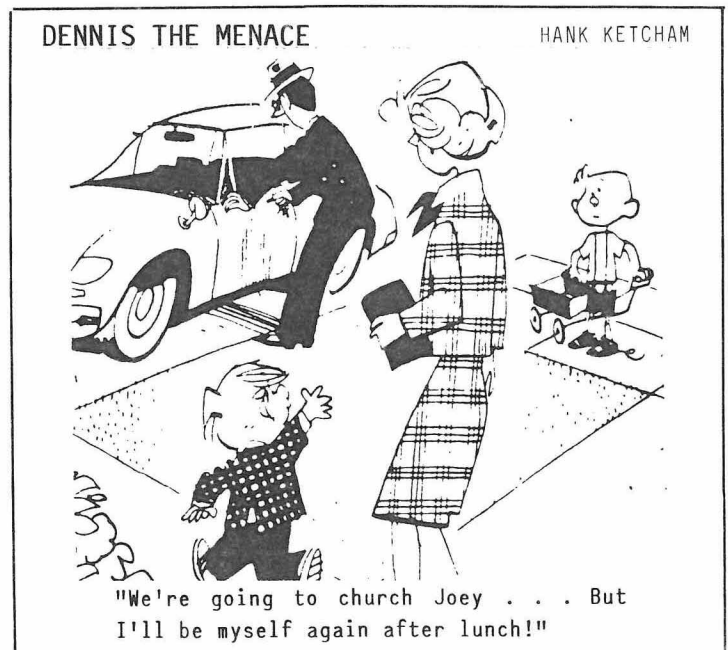
If you do play the lottery, will your church offerings go down because you are spending the money on lottery tickets? Jesus says, "Where your treasure is, there will your

heart be also." And if you are a big winner, what will you do with "treasure"? Will you save the money? Will you invest it? Will you spend it all on yourself? Or, will you give more money to the church than you are giving now? See what Jesus says happens to the treasures people want to have here on earth, "Don't save for yourselves treasures on earth, where moth and rust destroy them and thieves break in and steal." Matthew 6:19-21)

A few weeks ago, a young man found some lottery tickets which had been thrown away in a trash can. One of the tickets was a \$1,000 winner! The young man said he was planning to use the money for a trip. He was very happy. Most people want happiness, but real happiness is not a matter of luck. Psalm 84, verse 5 says that people who trust God are happy. These people give attention to their life with God in heaven.

Do you want real happiness? That happiness does not come from the lottery or money. Jesus says, "But save for yourselves treasures in heaven, where no moth or rust destroys them and no thieves break in and steals." Real happiness comes from trusting your Lord and Saviour Jesus Christ. May God bless you with HIS true happiness.

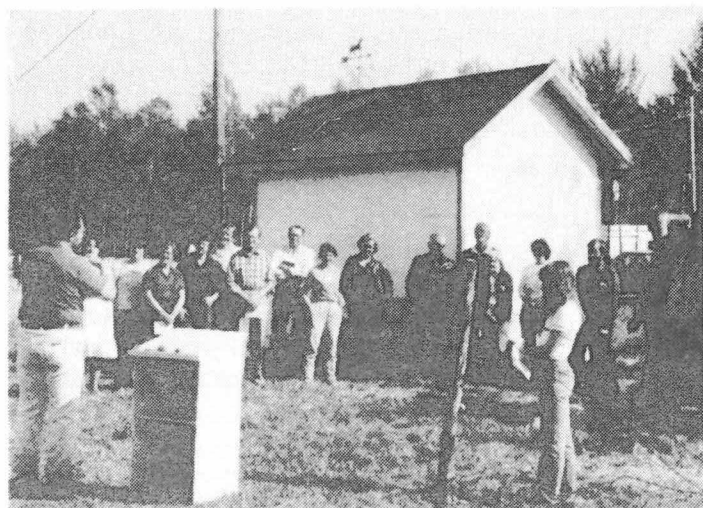
(One source recently estimated the odds of a person being struck by lightning as about 800 times greater than winning big in a lottery.--Ed.)



# CANADIAN BRETHREN OBSERVE SPECIAL SERVICE TO "BLESS THE SEED AND SOIL" AT PAX NATURA RANCH

Sunday, May 19, 1985 was a beautiful day at Pax Natura ranch at Clyde, Alta., which is about 25 miles north of Edmonton, the home of Cross of Christ Lutheran Church of the Deaf.

A special service to "bless the seed and the soil" which is a rite that dates back to our forefathers of years ago was observed



**SPECIAL WORSHIP SERVICE**--Members and visitors of Cross of Christ Lutheran church, Edmonton, Alta., gather for the 'blessing the seed and soil' service. Rev. Robert A. Bauer leads.



**READING THE RITE OF BLESSING**--Rev. Edwin Lehman, president, Alberta-British Columbia district, LCMS, reads the rite during the service. Rev. R. A. Bauer, left, interprets.

with Rev. Edwin Lehman, president of the Alberta-British Columbia district of the Lutheran Church-Missouri Synod reading the rite with Rev. Robert A. Bauer interpreting.

Basically, the service consists of a prayer of thanks and repentance in response form; scripture readings to remind the audience of God's gracious hand in creation and preservation, the rite of "Blessing the Seed and the Soil" and closing with a hymn or two being added.

1985 was the 10th year of incorporation of Pax Natura Society, the words, "Pax Natura" being a latin term meaning "at peace with nature."

The ranch, which is an outreach program of Cross of Christ Lutheran church in Edmonton, provides an opportunity for deaf youth to learn living skills in a ranch type environment and has been one of the mission projects of the International Lutheran Deaf Association for a number of years.

Pax Natura ranch encompasses three quarters of Crown land under a special lease from the government of Alberta and includes roads completed and maintained by the local municipal district. Staff and residents are housed in a six-trailer complex which include a diner and kitchen, two utility units, classroom-recreation area, all hooked up to water, sewer, natural gas, power and phone. Other buildings on the ranch include a barn 45x35', several granaries, tack shack, workshop 48'x72', fencing and 70 acres of hayfield. Numerous heads of stock round out the farming operation.

Heavy emphasis is placed on rural activities such as trail riding, hiking, gymkhana, honest work, etc. (The editor figures three quarters as being approximated 480 acres, so there must be plenty of room.)

Readers wishing to contact the Pax Natura Society should address inquiries to 11460 60 Ave., Edmonton, Alta T6H 1J5.

## ARE YOU READY?

You are ready . . . if . . . you put your trust in Jesus Christ as Saviour of the world, as your Saviour from sin. He was born . . . He lived, died and rose again . . . He went back to heaven--all for one reason. He wanted to open the door of heaven for you.



## **NEWS OF OUR CHURCHES FROM HERE AND THERE . . .**

A recent letter from Holy Cross Lutheran church, Columbus, Ohio contained a surprise check for \$64.00 for the ILDA scholarship fund. Thank you very much, brothers and sisters.

Rogate Lutheran church, Clearwater, Fla. has extended a call to Rev. Larry Larsen, their former vicar in 1974-75. who was pastor to Joy of Jesus Lutheran church in central Illinois before going to New Mexico to serve the Navajo Indians.

Ten deaf folks from Portland (Oregon) area enjoyed a 19-day cruise down south through the Panama Canal to the Carribbean and the Atlantic Sept. 16 through Oct. 5. One of those going was ILDA board member Harold Rife and his wife, Fern. From the description he provided us. it sounds like everyone had a great time.

A special remembrance service for Ada M. Sapko, a long time member of Trinity Lutheran church in Pittsburgh, Pa., who died June 4,

1985 was held at the church on Sept. 29, 1985. Mrs. Sapko, who devoted 25 years of service to the church as teacher, organist, interpreter and everyone's friend was eulogized by Pastor Edwin Bergstresser in his words "that once again, God was able to do great things through a human being." A plaque was presented to her husband by James Paul, president, on behalf of the congregation.

Pastor Edwin Bergstresser, Ruth Ludivico and Wayne Ritchey, all of Trinity, Pittsburgh, attended a music workshop at Concordia Seminary, St. Louis, Oct. 22-27. The group were the guests of Prof. Dan Pokorny and his wife on Tuesday evening for wine and cheese.

Mr. Dale D. Paden, who is well known to many members of the ILDA, is living with his daughter, Mary Jean Hammerstrom, 6006 N. 58th St., Omaha, Neb. Dale's wife of more than half a century, Volia, was called home to be with the Lord on Aug. 17. We are certain he would enjoy hearing from his many friends.

## **ILDA LEADERSHIP TRAINING PROGRAMS PROVE TO BE SUCCESSFUL IN WASHINGTON, D.C. AND MADISON**

Two leadership training programs sponsored by the International Lutheran Deaf Association in Washington, D.C. Oct. 10-13 and in Madison, Wis. Nov. 7-10 proved to be very successful both in content and the number

participating at both workshops. One planned for Portland, Ore. was canceled earlier due to the low number of registrants. However, plans are being made to hold it in the spring of 1986, if interest in the seminar picks up.

## **Dr. Hoffmann Honored**

Dr. Oswald C. J. Hoffmann for 30 years the speaker of The Lutheran Hour, Bringing Christ to the Nations," was the honoree at a banquet given recently in St. Louis by members of the International Lutheran Laymens League (ILL) and their spouses.

Dr. Hoffmann succeeded Dr. Walter A. Maier as speaker on the famous radio program. For those deaf who may not know, Dr. Maier was the speaker at the dedication of the chapel at the Lutheran School for the Deaf on May 2, 1940, when about 10,000 people assembled on the spacious lawns of the school for the service, which was also attended by several hundred deaf with the Rev. N.P. Uhlig interpreting.

Dr. Hoffmann and his wife were presented with several gifts, among them a two-week vacation at a resort of their choice anywhere in North America.

Approximately 30 persons were in attendance at Gallaudet college, where the eastern region meeting was held and 45 at the Yahara Center at Madison.

Workshops conducted by deaf leaders from throughout the United States who are members of the Lutheran Church-Missouri Synod led the meetings on such topics as witnessing and evangelism, communication skills, church administration, music and choir, duties of church officers, to name a few.

A snow storm hit the Madison area during the height of the meetings and some concern was raised about departures, but subsided sufficiently by the end of the workshop to allow everyone to leave on time.

The ILDA board of directors is just about certain to discuss the possibility of more seminars of this kind in the future, which would allow other interested individuals to participate.

# Our Savior Lutheran Church, Detroit, Celebrates Diamond Anniversary Nov. 9-10

If anyone ever tells you that preaching the Good News about Jesus Christ to just **one** man is not worth it and a waste of time, then we have an excellent precedent in Our Savior Lutheran church, Detroit, which just celebrated its 75th anniversary of its existence Nov. 9-10 with a banquet at Hoffman House in Warren which was attended by 151 people.

The church actually had its beginnings much farther back than April 1910 when the congregation was formally organized. The Rev. Enno Duemmling, who had a very limited knowledge of sign language, served just one deaf man

## NEW CHURCH IN CHARLOTTE OFFERING CHARTER MEMBERSHIPS

Rev. Frank Wagenknecht, who preached his farewell sermon at Rogate Lutheran church in Clearwater, Fla. on Sept. 15 to accept a challenge to chart a new course in ministry with the deaf in the Carolinas, has announced the formation of a new congregation in Charlotte, N.C. The new church will be accepting members over the next few months who will be listed as charter members and given certificates signifying the distinction.

Members of Ascension Lutheran church in Charlotte have given gracious permission to the deaf to use a house on church property which will be remodeled to use as a chapel. An office for ministry and counseling will be there with Pastor "W" making himself available.

Weekly services by Pastor Wagenknecht are being planned with the group from Hickory and Greensboro joining once a month.

We congratulate our brothers and sisters there and wish them every success and God's blessings!

## Explosion (continue from page 1)

to Sartori Memorial hospital in Cedar Falls. Lester, who was only two feet away, miraculously escaped serious injury. Betty was released, then readmitted three days later, due to extensive pain and spent a week in isolation.

The loss was covered by insurance. However, Betty will be undergoing therapy treatments for a number of weeks.

Readers are being asked to bear with us during this difficult time if the paper is a few days later than usual.

in 1896, and the "good news" spread and soon there were 12 coming to "hear" him. Today, almost 90 years later, the congregation numbers about 200, coming from widely scattered areas of Detroit and its environs.

Over the years, pastors who have served Our Savior's have been Rev. H. A. Bentrup, Rev. Arthur Boll, Rev. O. C. Schroeder, Rev. William Gielow, Candidate Ernest Scheibert, Rev. Henry Quitmeyer, Rev. Norbert E. Borchardt, Rev. Russell Johnson and today the church is served by Rev. Clark R. Bailey, who has been pastor since March 17, 1974.

Speaker at the banquet Saturday evening was Rev. Mark Seeger, pastor of Alpha Lutheran church, Rochester, N.Y., and who also serves as regional counselor of the Great Lakes region which includes seven churches of the deaf, Our Savior's being one of them. Chairing the two-day event was Elmer Francisco, a counselor at the Lutheran School for the Deaf. Ken Carter was emcee.

## CPH TO PRODUCE VIDEO SHOWS FOR DEAF

The Missouri Synod's newly formed deaf advisory council to Concordia Publishing House (CPH) met for the first time in St. Louis. The council was organized to examine the potential for producing closed-captioned video programs through CPH, and to identify new and existing programs which would be of use or interest to deaf people.

According to CPH sources, volume one of "Little Visits With God," the first CPH videotape production to become available to the deaf via closed captioning, will be completed in February through the National Captioning Institute, Falls Church, Va. An adaptation of volume two is scheduled for next summer.

Members of the deaf advisory council include representatives of CPH, the Lutheran Laymen's League (LLL), the Mill Neck Foundation, a non-profit organization based in Mill Neck, N.Y., that enhances ministry for the deaf, and two hearing impaired persons--Rev. LaVern M. Mass, pastor of Pilgrim Lutheran church, Kansas City, Mo. and Mrs. Lynne van der Linde, Kearney, Mo.

-----  
The Bible that is falling apart usually  
belongs to someone who isn't.

# KEMP-HATCH AMENDMENT

Readers who support pro-life efforts and are opposed to abortions would do well to contact their senators and representatives in Washington and urge their support for the Kemp-Hatch amendment which would specifically prohibit our tax dollars from going to any organization that provides to any pregnant woman procedures, counseling for abortion procedures or referral for abortion procedures, unless the life of the woman would be endangered by carrying the fetus to term.

As the law now stands, "family planning" would be eligible for \$142 million dollars

from Title 10. Planned parenthood falls under the general heading of "Family Planning." They are responsible for 86,000 abortions a year.

**PLEASE**, let your congressmen know how you feel about your tax dollars being used this way!

The bodies of 16,433 unborn babies were buried Sunday, Oct. 6, 1985 in Los Angeles. The aborted babies, in county storage for 3½ years after discovery, were the subject of a lengthy dispute over how to dispose of them.

What stalled the decision was a demand for incineration sponsored by the Feminist Women's Health center represented by the American Civil Liberties union. (ACLU). Prolifers, however, insisted on having the human dignity of a decent burial.

The complicated judicial action was finally resolved Sept. 26 when the California Supreme Court rejected the ALCU's appeal. This allowed the Los Angeles county board of supervisors to put into action their standing unanimous vote for burial.

The eulogy was supplied by President Reagan who sent a letter saying in part that "this nation was founded by people who shared a vision of the sacredness of human life." Well known singer Pat Boone, himself a pro-lifer, sang his new song created exclusively for this multitude of tiny human fatalities.

## Deaf Lutherans (continue from page 1)

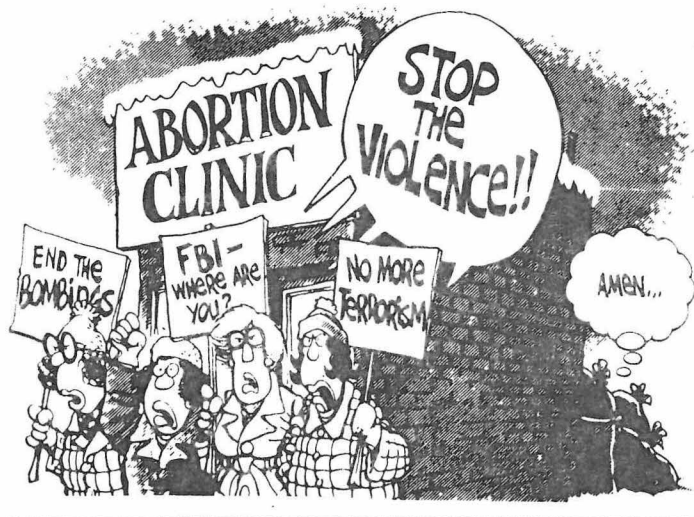
known as ERILDA, recently donated a sum of money to give financial and spiritual support to Concordia special school and to Mrs Naomi Warth, director and principal, for her and two staff members to continue promoting the growth of much needed quality education for all deaf children in Brazil.

Those wishing to have more information are encouraged to contact the writer at the above address.

The 1986 conference of the Eastern Region of the ILDA will be held June 6, 7 and 8 at the Quality Inn, Towson, MD.

## GALLAUDET TOPS 2,000 MARK . . .

Fall, 1985 saw an enrollment of 2,075 students registered for classes, including 712 freshmen.



## HOW DOES YOUR CHURCH RATE?

We heard about a man who visited 18 different churches, going to a different one each Sunday. Sitting near the front at each worship service, he would walk back after the conclusion then to the front and then back again, using a different way each time. He was smiling and pleasant, and would try to start a conversation with people if he could. He used the following scale to rate the churches he visited: 10 points for a smile from another person; 10 if someone said 'hello'; 100 if someone asked his name and gave theirs; 200 if someone invited him to come again; 1,000 if someone introduced him to another person; 2,000 if someone introduced him to the minister.

On this scale, 11 of the 18 churches earned fewer than 100 points, and five churches got less than 20 points!! His conclusion:

"The doctrine may be Biblical, the singing inspirational and the sermon uplifting; but when visitors find nobody cares if they are there, they are unlikely to return."



**PASTORS IN DEAF MINISTRY**

|                     |                      |                             |              |
|---------------------|----------------------|-----------------------------|--------------|
| Anderson, Orlin     | 104 Finley St.       | Jacksonville, IL 62650      | 217/243-2528 |
| Bailey, Clark       | 4911 Anna St.        | Warren, MI 48092            | 313/751-5823 |
| Bauer, Robert       | 5808 113 B St.       | Edmonton, ALTA T6H 3L3 CAN  | 403/434-4246 |
| Bergstresser, Edwin | 409 Swissvale        | Pittsburgh, PA 15221        | 412/242-1353 |
| Borhart, Glen       | 2913 Englewood Dr.   | NE Largo, FL 35541          | 813/535-6397 |
| Busby, Walter       | 230 Cornell Road     | St, Augustine, FL 32086     | 904/829-3373 |
| Bush, David         | 1925 Felix Ave.      | Memphis, TN 38104           | 901/726-1687 |
| Carstens, David     | 19805 NE Holladay    | Portland, OR 97230          | 503/667-6703 |
| Case, Robert        | 4411 LaBranch        | Houston, TX 77004           | 713/526-6134 |
| Dahmann, Roy        | 633 Hacienda Ave.    | San Lorenzo, CA 94580       | 415/276-3860 |
| Fremer, Joseph      | 2287 Segwun Se       | Lowell, MI 49331            |              |
| Friedrich, Ronald   | 1101 Woodcrest Drive | Garland, TX 75040           | 214/271-1408 |
| Fritz, John         |                      |                             |              |
| Gehrs, Gerhard      | 6262 Soledad         | Riverside, CA 92504         | 714/689-8380 |
| Gehlbach, Daryl     |                      |                             |              |
| Gerhold, C. Roland  | 510 Parker St.       | Newark, NJ 07104            | 201/485-2260 |
| Hauptman, August    | 1103 Manley Dr.      | San Gabriel, CA 91776       | 213/284-6825 |
| Hein, Gordon        | 1312 Victoria Ave. E | Thunder Bay, ON CAN P7C 1C2 | 807/622-9744 |
| Hewitt, Martin      | 11916 N. Stevens Ct. | Spokane, WA 99218           | 509/466-8844 |
| Jasper, Louis       | 32 Oxford Rd. 1/F    | Kowloon Tong HONG KONG      |              |
| Jones, Charles      | 100 E. Marion Ave.   | Prospect Heights, IL 60070  | 312/398-6316 |
| Kraus, George       | #1 Tyndale Pl.       | FT. Wayne, IN 46825         |              |
| Lange, William      | Route 1, Box 218     | Topeka, IL 61567            | 309/597-2442 |
| Lawson, Gary        | 18931 Meredith Ave.  | Euclid, OH 44119            | 216/486-9149 |
| Leber, Donald       | 360 Morse Rd.        | Columbus, OH 43214          | 614/885-3362 |
| Leimkuehler, Ray    | 1551 S. University   | Denver, CO 80210            | 303/232-6973 |
| Leonhardt, Roger    | 308 E. 14th St.      | Devils Lake, ND 58301       | 701/662-3267 |
| Ludwig, William     | 6547 46th Ave., NE   | Seattle, WA 98115           | 206/524-2283 |
| Marsh, Prentice     | 8448 S. Indiana Ave. | Chicago, IL 60619           | 312/723-3232 |
| Mass, LaVern        | 6948 Glenwood        | Overland Park, KS 66204     | 913/722-0602 |
| Moody, Richard      | 1536 Tamm            | St. Louis, MO 63139         | 314/781-9836 |
| Mueller, David      | 1623 J Ave. NE       | Cedar Rapids, IA 52402      | 319/362-2310 |
| Munz, Jerold        | 5856 Riva Ridge Dr.  | Indianapolis, IN 46227      | 317/783-4948 |
| Natonick, George    | 4703 Montgomery Pl.  | Beltsville, MD 20705        | 301/937-1705 |
| Palmer, William     | 7286 N. 38th St      | Milwaukee, WI 53209         | 414/871-2700 |
| Petzoldt, Shirrel   | 4908 San Joaquin     | Toledo, OH 43615            | 419/531-3457 |
| Pledger, Philip     | 2908 Teal Ave.       | Wausau, WI 54401            | 715/842-5517 |
| Pokorny, Daniel     | 10 N. Seminary Terr. | St. Louis, MO 63105         | 314/727-8896 |
| Reinap, Richard     | 1214 Radam Circle    | Austin, TX 78745            | 512/441-1636 |
| Ring, George        | 3215 Cedar Ct.       | Des Moines, IA 50320        | 515/284-1209 |
| Rowland, Robert     | 18 Lesbos Ct.        | Sacramento, CA 95823        | 916/391-3463 |
| Rynearson, Rodney   | 6861 E. Nevada Ave.  | Detroit, MI 48234           | 313/368-8540 |
| Schlund, Steven     | 116 Walnut St.       | Delavan, WI 53115           | 414/728-5980 |
| Schnepp, Kenneth    | P.O. Box 9837        | Towson, MD 21204            |              |
| Seeger, Mark        | 1320 Lehigh Station  | Henrietta, NY 14467         | 716/334-4124 |
| Truog, Brian        | 15 Reckinger         | Aurora, IL 60505            | 312/898-6754 |
| Varsanyi, Joseph    | 2030 McKinley St.    | Philadelphia, PA 19149      | 215/743-4710 |
| Wagenknecht, Frank  | 1625 Woodridge Dr.   | Clearwater, FL              | 813/381-5414 |
| Waite, Wallace      | 1909 Huxley          | Madison, WI 53704           | 608/249-8076 |
| Zuhn, Donald        | 11504 22ns Ave. S.   | Burnsville, MN 55337        |              |

**LAY MINISTERS**

|                      |                       |                         |              |
|----------------------|-----------------------|-------------------------|--------------|
| Berninghaus, Gilbert | 108 Riverview Dr., E. | Great Falls, MT 59404   | 406/452-3884 |
| Busg, Elwood         | 6367 Fiske Road       | Bartlett, TN 38134      | 901/386-5277 |
| Consoer, Paul        | Rt. 2, Box 93         | Sioux Falls, SD 57101   | 605/338-6159 |
| Fairman, Don         | 3752 Camilla          | Jackson, MS 39212       | 601/373-9161 |
| French, Richard      | 4324 SW Willow        | Seattle, WA 98136       | 206/935-2920 |
| Oettel, Robert       | 5070 Lake St.         | Omaha, NE 68104         | 402/558-0668 |
| Ziprick, Harold      | 4328 Morley Trail,    | NW Calgary, ALT T2L 1L3 | 403/282-7718 |

**DON'T STAY AWAY FROM CHURCH**

1. Because you are poor --there is no charge.

2. Because you are rich--the church can use your money.

3. Because it rains--you go to work in the rain.

4. Because it is hot--so is the golf course.

5. Because it is cold--it is warm and friendly here.

6. Because no one invited you--you go many places without being asked.

7. Because you don't like the pastor--he is human just like you.

8. Because some church people are hypocrites--you meet people like that daily.

9. Because you have visitors--ask them to come to church with you.

10. Because you do not have fancy clothes--the church is not a fashion show.

11. Because the church always wants more money--so does your grocery store.

12. Because you have plenty time in the future to worship God--are you sure???

**BEAUTY AIDS**

A dear old lady was asked what she used to make her complexion so beautiful and her whole person bright and attractive.

She answered this way:

"I use for my lips, truth;

I use for my voice, kindness;

I use for my eyes, compassion;

I use for my hands, charity;

I use for my figure, uprightness;

I use for my heart, love;

I use for any who do not like me, prayer."

Try this and see if you too will become more attractive!

--borrowed

# WHICH SIN IS THE WORST SIN?

By Rev. Mark W. Seeger  
1969 S. Clinton Ave.,  
Rochester, N.Y. 14618

Have you ever wondered which sin is the worst sin? Is it murder? Is adultery the worst sin? Maybe gossip is the worst if it destroys someone's reputation? What about stealing? Maybe the worst sin is missing church because sleep or resting is more important? What do you think is the worst sin?

All of these sins are terrible, and we really can't say one is worse than the other. We also have to admit that we are guilty of some very terrible sins. We have done so much evil and we are sinful people living in a sinful world. Yes, we have to admit we are sinners!

But, Jesus came to die for every one of these sins. He came to die for the sins of

the whole world. He died for the sins that we think are major, terrible sins, and He died for the sins that we think are minor (even though there are no 'minor' sins')

However, there is one sin that is unforgiveable. There is one sin that will lead a person to hell. That is the sin of "unbelief." That is the sin against the Holy Spirit. That is the sin of not believing in Jesus for forgiveness. The purpose of the Holy Spirit is to give faith and make the faith stronger. If a person refuses to believe in Jesus, that person is sinning against the Holy Spirit by not allowing the Holy Spirit to work in him. Refusing to believe in Jesus Christ as Savior and Lord is the sin that will prevent a person from going to heaven, and instead, will send him to eternal punishment in hell.

The Holy Spirit want to give you faith and to build your faith stronger. Don't reject the Holy spirit. Don't ignore the means by which the Spirit can build you stronger in your faith (the Word of God, the Bible and the sacraments). And remember, Jesus died on the cross to take away all our sins, from the worst to the smallest. Remember to thank Jesus for taking away all our sins!

## VICE BOX

Is your church searching for a novel idea of increasing its building fund, or any worthwhile idea, for that matter? Then it may be interested in borrowing this idea. . . .

A church we know about encourages its members who smoke, drink or otherwise overindulge to quit and place the funds that would have been spent in its "vice box" in the narthex. If you can't quit, then how about matching funds?

Simple arithmetic shows that if 100 people using a pack a day would pledge \$1 a day, \$3,000 could be realized each month for its fund.

-----  
Small girl to teacher: "I've been away on vacation for two weeks. Is the Lord's Prayer still the same?"  
-----

-----  
Lord, while You are busy preparing a place for us, prepare us, as well, for that place!

# The DEAF LUTHERAN

January-February 1986

OFFICIAL PUBLICATION OF THE INTERNATIONAL LUTHERAN DEAF ASSOCIATION AND THE BOARD FOR MISSION, THE LUTHERAN CHURCH-MISSOURI SYNOD, PUBLISHED BI-MONTHLY BY CHRISTIAN ARMORY OF COLUMBUS, OHIO 3RD CLASS POSTAGE PD. COLUMBUS, OHIO, SUBSCRIPTION FEES: INDIVIDUAL.. \$4.00 PER YEAR. CHURCH BLANKET PLAN.. \$3.50 EACH MEMBER PER YEAR.

PLEASE SEND ALL SUBSCRIPTION FEES AND ADDRESS CHANGES TO ELMER FRANCISCO, BUSINESS MANAGER, 6861 EAST NEVADA AVE., DETROIT, MICH. 48234.  
PLEASE SEND ARTICLES, STORIES AND PICTURES TO LESTER AHLIS, EDITOR, 1004 CHERRYWOOD DR., CEDAR FALLS, IOWA 50613.

NON-PROFIT ORG.  
U.S. POSTAGE  
PAID  
PERMIT 1444  
COLUMBUS, OHIO